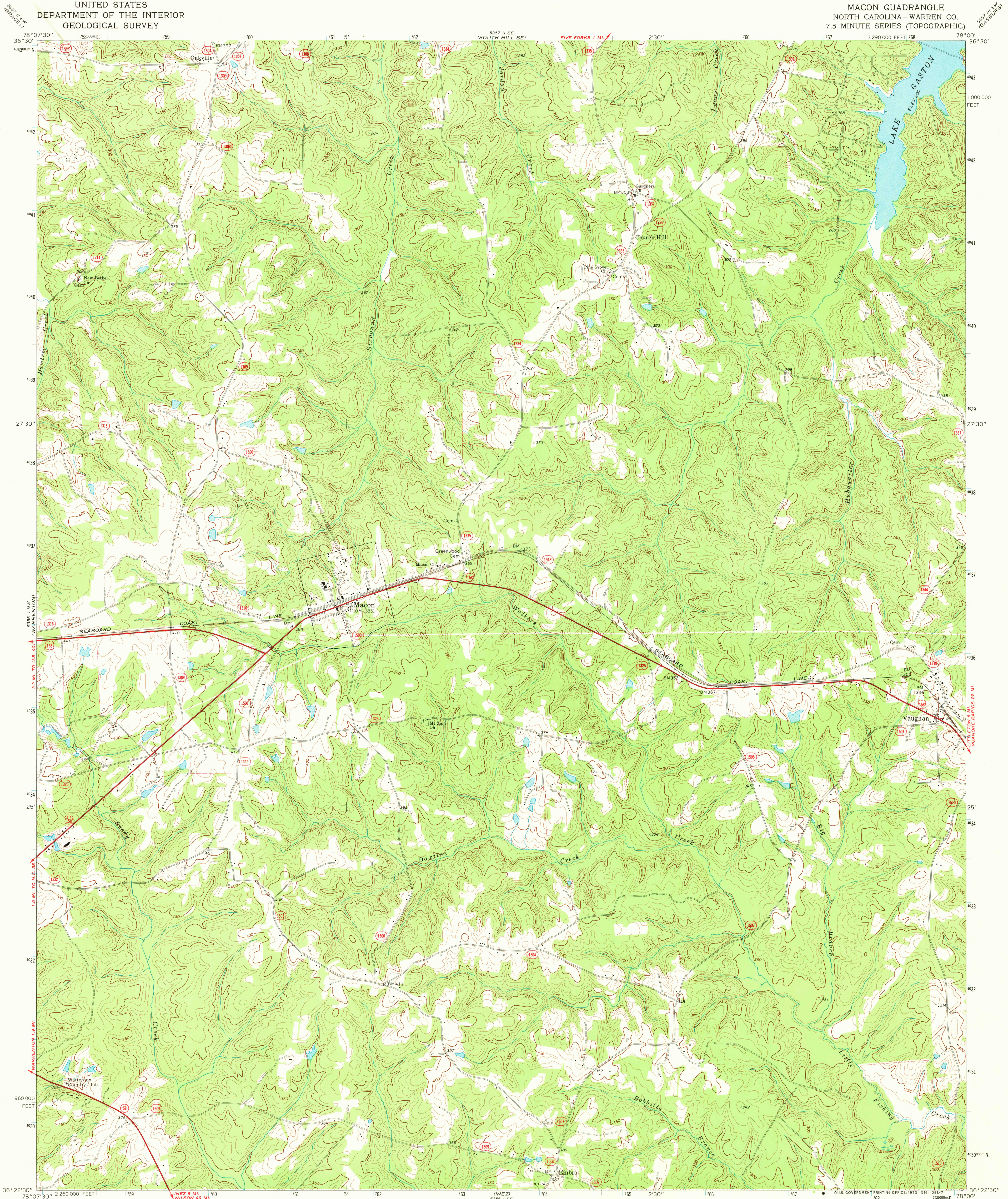


UNITED STATES  
DEPARTMENT OF THE INTERIOR  
GEOLOGICAL SURVEY

MACON QUADRANGLE  
NORTH CAROLINA—WARREN CO.  
7.5 MINUTE SERIES (TOPOGRAPHIC)



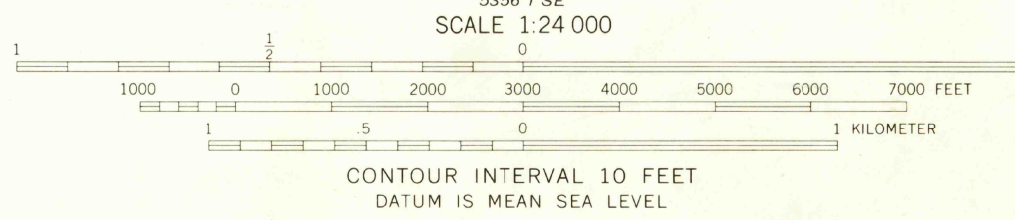
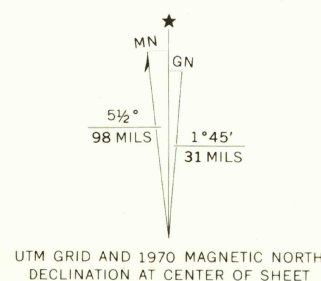
Mapped, edited, and published by the Geological Survey

Control by USGS and USC&GS

Topography by photogrammetric methods from aerial  
photographs taken 1970. Field checked 1970

Polyconic projection. 1927 North American datum  
10,000-foot grid based on North Carolina coordinate system  
1000-meter Universal Transverse Mercator grid ticks, zone 17,  
shown in blue

Fine red dashed lines indicate selected fence and field lines where  
generally visible on aerial photographs. This information is unchecked



ROAD CLASSIFICATION	
Primary highway, hard surface	Light-duty road, hard or improved surface
Secondary highway, hard surface	Unimproved road
Interstate Route	U. S. Route
	State Route

USGS  
Historical  
Topographic Division

JUL 30 1973  
MACON, N. C.  
N3622.5—W7800/7.5  
1970  
AMS 5356 1 NE—SERIES V842

Hoer  
2500  
50 Plans