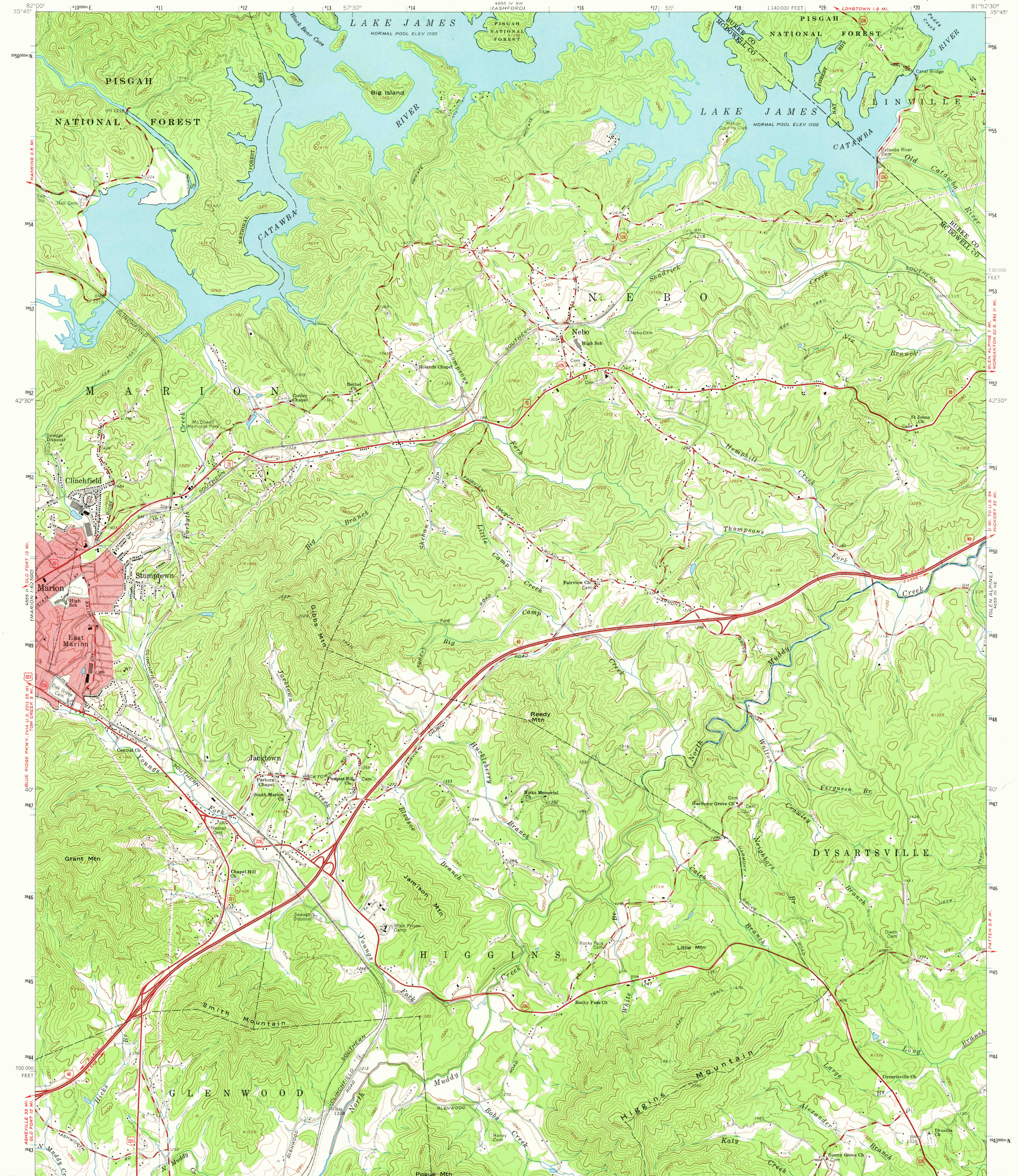


LITTLE ASHLEY 4650 1 35 NW (NEERLAND)
2445 2446

UNITED STATES
DEPARTMENT OF THE INTERIOR
GEOLOGICAL SURVEY

MARION EAST QUADRANGLE
NORTH CAROLINA
7.5 MINUTE SERIES (TOPOGRAPHIC)



Mapped, edited, and published by the Geological Survey

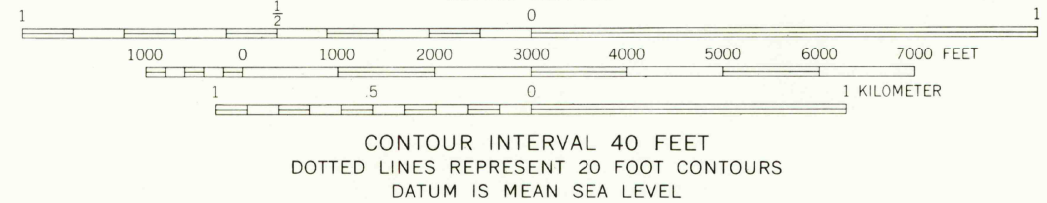
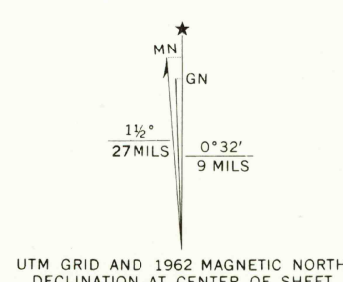
Control by USGS and USC&GS

Topography by photogrammetric methods from aerial photographs taken 1960. Field checked 1962

Polyconic projection. 1927 North American datum
10,000-foot grid based on North Carolina coordinate system
1000-meter Universal Transverse Mercator grid ticks,
zone 17, shown in blue

Fine red dashed lines indicate selected fence and field lines where generally visible on aerial photographs. This information is unchecked

Red tint indicates area in which only landmark buildings are shown



ROAD CLASSIFICATION
Heavy-duty ——— Light-duty ———
Medium-duty ——— Unimproved dirt ———
Interstate Route U.S. Route State Route

USGS
HISTORICAL FILE
TOPOGRAPHIC DIVISION

MARION EAST, N.C.

N3537.5—W8152.5/7.5

1962

AMS 4655 III NW—SERIES V642

MAY 21 1973