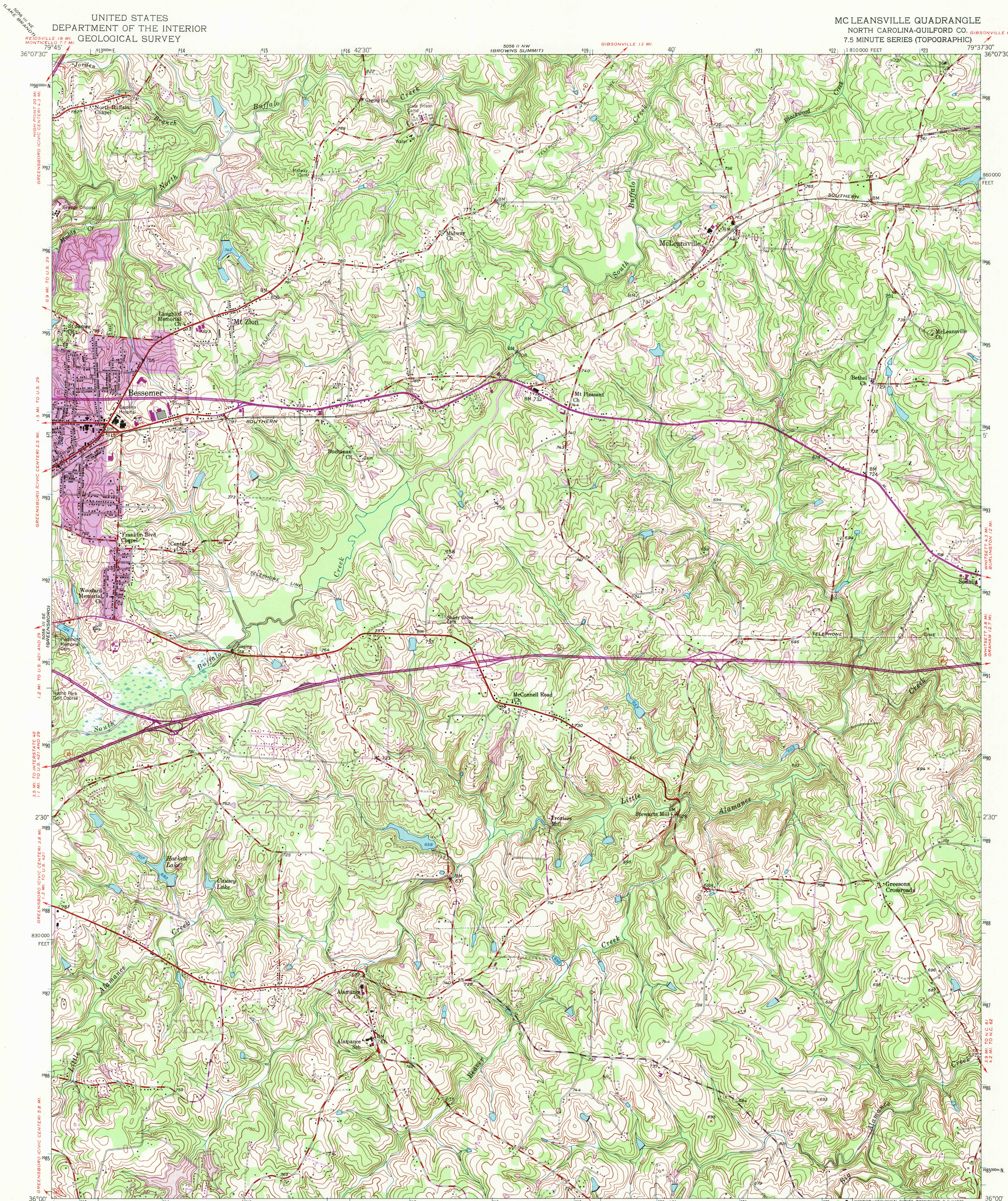


UNITED STATES
DEPARTMENT OF THE INTERIOR
GEOLOGICAL SURVEY

MC LEANSVILLE QUADRANGLE
NORTH CAROLINA-GUILFORD CO. GIBSONVILLE 6 MI.
7.5 MINUTE SERIES (TOPOGRAPHIC)



Maped, edited, and published by the Geological Survey

Control by USGS, USC&GS, and North Carolina Geodetic Survey

Culture and drainage in part compiled from aerial photographs taken 1948

Topography by plane-table surveys 1952

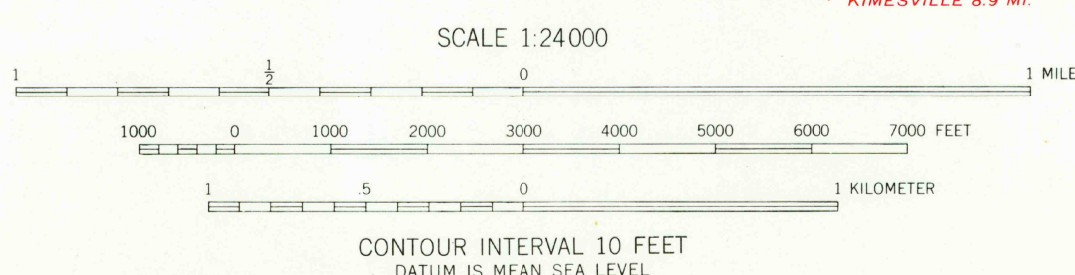
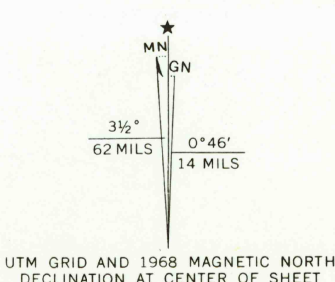
Polyconic projection. 1927 North American datum

10,000-foot grid based on North Carolina coordinate system

1000-meter Universal Transverse Mercator grid ticks, zone 17, shown in blue

Revisions shown in purple compiled from aerial photographs taken 1968. This information not field checked

Purple tint indicates urban areas



USGS
Historical File
Topographic Division

ROAD CLASSIFICATION

Heavy-duty	Light-duty
Medium-duty	Unimproved dirt
Interstate Route	U.S. Route
	State Route

HISTORICAL

U.S.G.S.
FILE COPY
TOPOGRAPHIC DIVISION

MC LEANSVILLE, N. C.
N3600-W7937.5/7.5
1952
PHOTOREVISED 1968
AMS 5086 II SW-SERIES V842

3255
MAY 1 1970