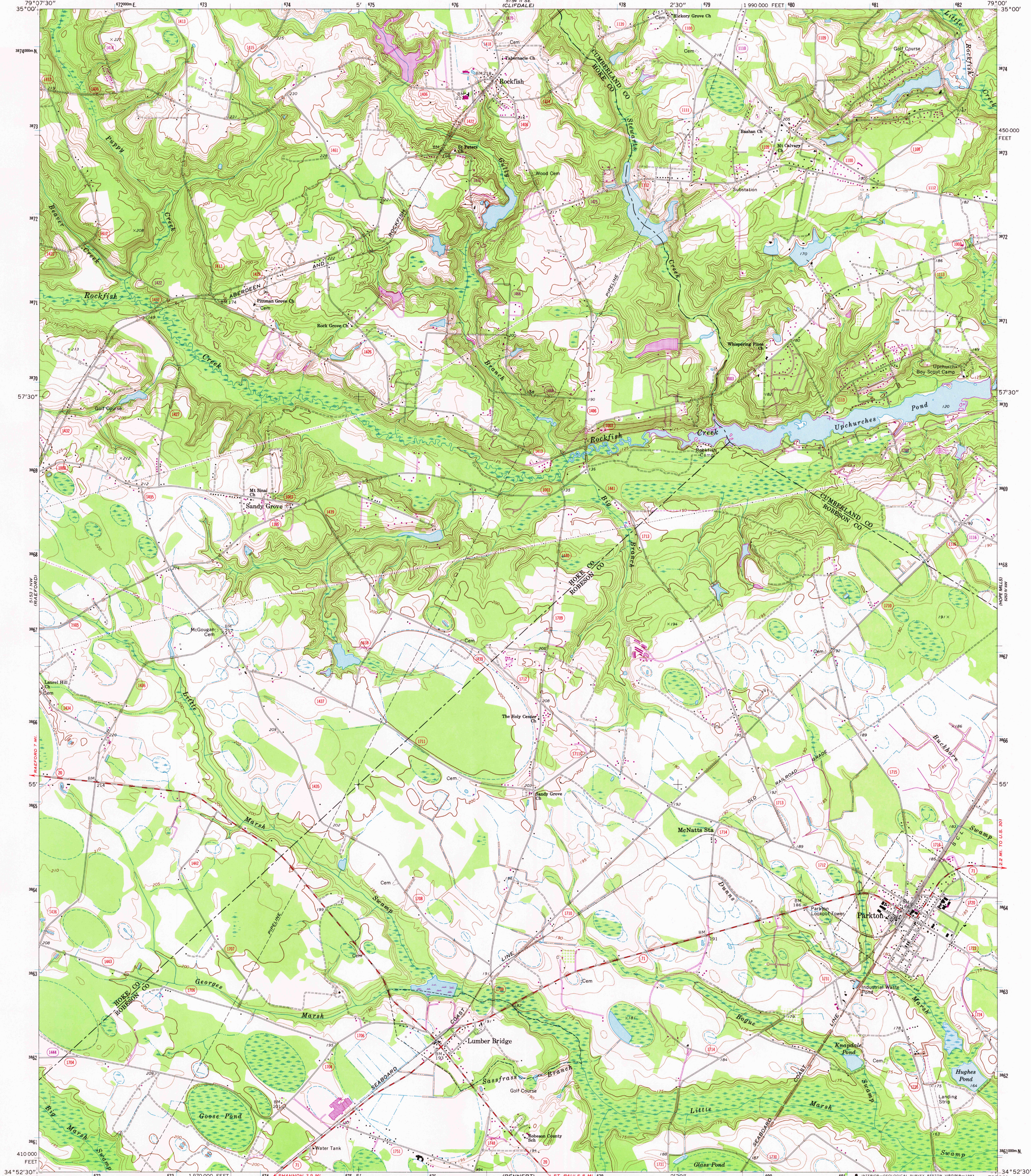


UNITED STATES
DEPARTMENT OF THE INTERIOR
GEOLOGICAL SURVEY

PARKTON QUADRANGLE
NORTH CAROLINA
7.5 MINUTE SERIES (TOPOGRAPHIC)

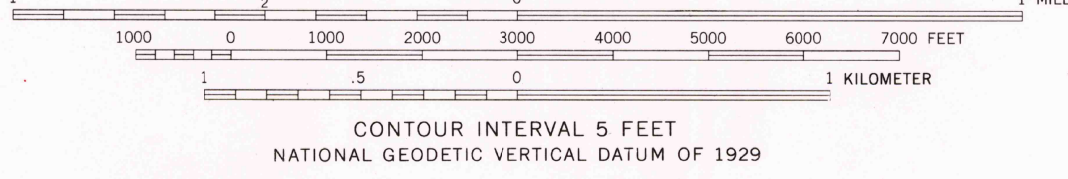
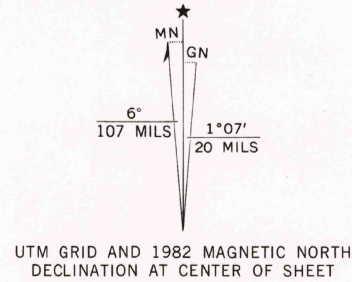


Mapped, edited, and published by the Geological Survey

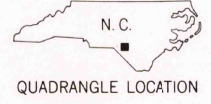
Control by USGS, NOS/NOAA, USCE, and North Carolina Geodetic Survey
Topography by photogrammetric methods from aerial photographs
taken 1971. Field checked 1972

Projection and 10,000-foot grid ticks: North Carolina coordinate
system (Lambert conformal conic). 1000-meter Universal Transverse
Mercator grid ticks, zone 17, shown in blue. 1927 North American
Datum. To place on the predicted North American Datum 1983
move the projection lines 12 meters south and 22 meters
west as shown by dashed corner ticks

Fine red dashed lines indicate selected fence and field lines where
generally visible on aerial photographs. This information is unchecked
Short dashed blue lines indicate elliptical bay outlines
visible on aerial photographs



THIS MAP COMPLIES WITH NATIONAL MAP ACCURACY STANDARDS
FOR SALE BY U.S. GEOLOGICAL SURVEY, RESTON, VIRGINIA 22092
A FOLDER DESCRIBING TOPOGRAPHIC MAPS AND SYMBOLS IS AVAILABLE ON REQUEST



ROAD CLASSIFICATION	
Primary highway, hard surface	Light-duty road, hard or improved surface
Secondary highway, hard surface	Unimproved road
Interstate Route	U.S. Route
	State Route

PARKTON, N. C.
N3452.5—W7900.7

1972
PHOTOREVISED 1982
DMA 5153 I NE—SERIES V842

Revisions shown in purple and woodland compiled in cooperation
with North Carolina agencies from aerial photographs taken 1981
and other sources. This information not field checked: Map
dated 1982

RETURN TO:
USGS AND HISTORICAL MAP ARCHIVES