

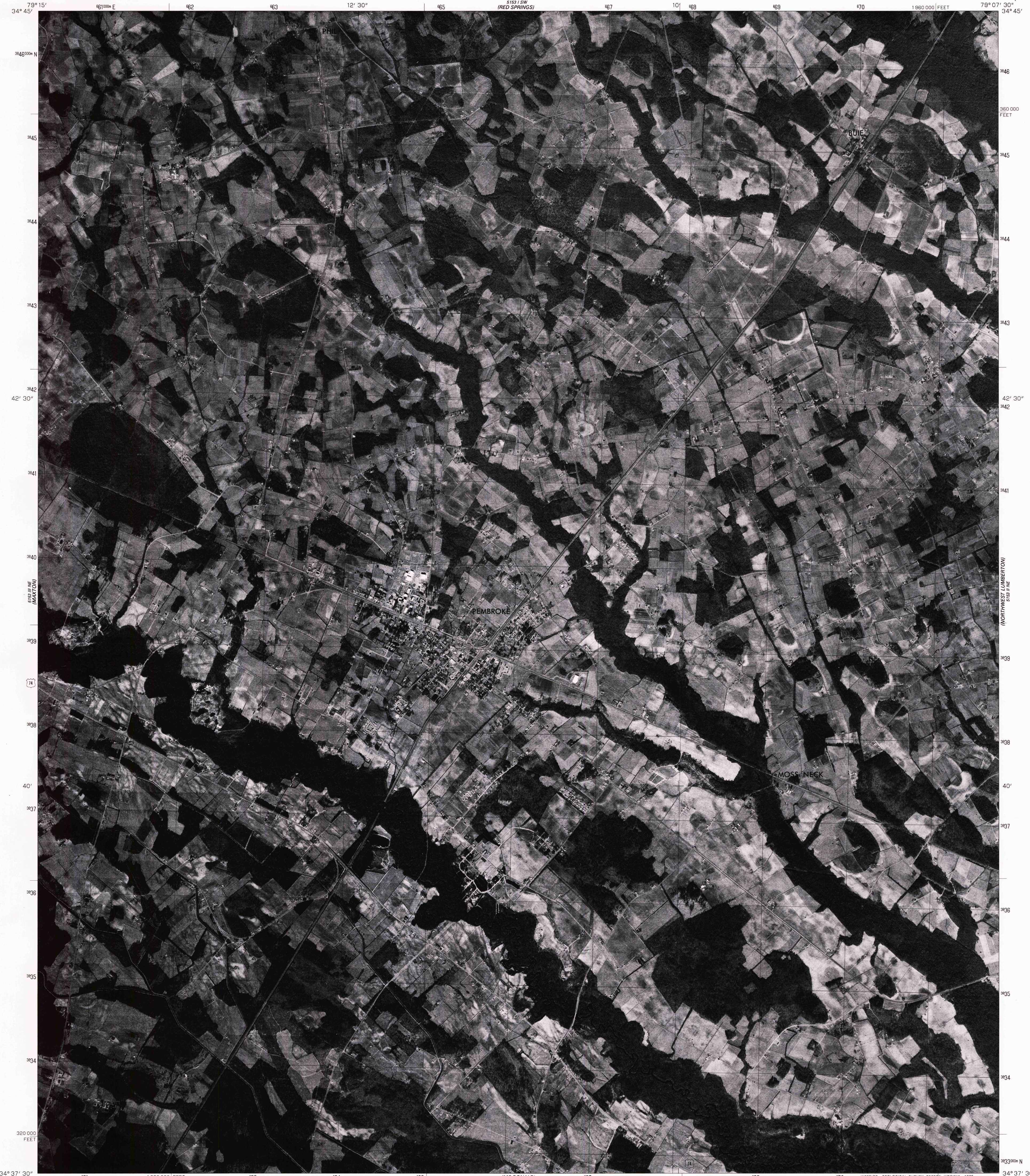
SERIES  
(MAGNALL)

UNITED STATES  
DEPARTMENT OF THE INTERIOR  
GEOLOGICAL SURVEY

STATE OF NORTH CAROLINA  
DEPARTMENT OF NATURAL AND ECONOMIC RESOURCES  
RALEIGH, NORTH CAROLINA

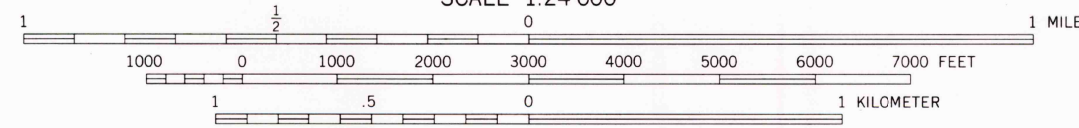
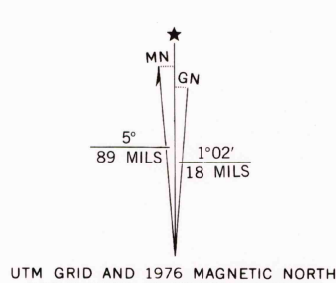
PEMBROKE QUADRANGLE  
NORTH CAROLINA  
7.5 MINUTE SERIES ORTHOPHOTOQUAD

SERIES  
(ROWLAND)



Produced and published by the Geological Survey  
Orthophoto prepared from 1:80,000-scale  
aerial photograph taken January 15, 1976  
Projection and 10,000-foot grid ticks: North Carolina  
coordinate system, (Lambert conformal conic)  
1000-meter Universal Transverse Mercator grid,  
zone 17. 1927 North American datum  
Photomagey rectified by optical scanning  
which may produce double or mismatched images;  
use the mean of image positions for map point

(ROWLAND)  
5153 II SW



THIS MAP COMPLIES WITH NATIONAL MAP ACCURACY STANDARDS  
FOR SALE BY U. S. GEOLOGICAL SURVEY, RESTON, VIRGINIA 22092



PRINCIPAL NUMBERED HIGHWAYS  
Interstate Route U. S. Route State Route

USGS  
Historical File  
Topographic Division

This quadrangle area also covered by  
1:24,000-scale topographic map

PEMBROKE, N. C.  
N3437.5-W7907.5/7.5

1976

AMS 5153 II NW-SERIES V042

OCT 19 1978

900