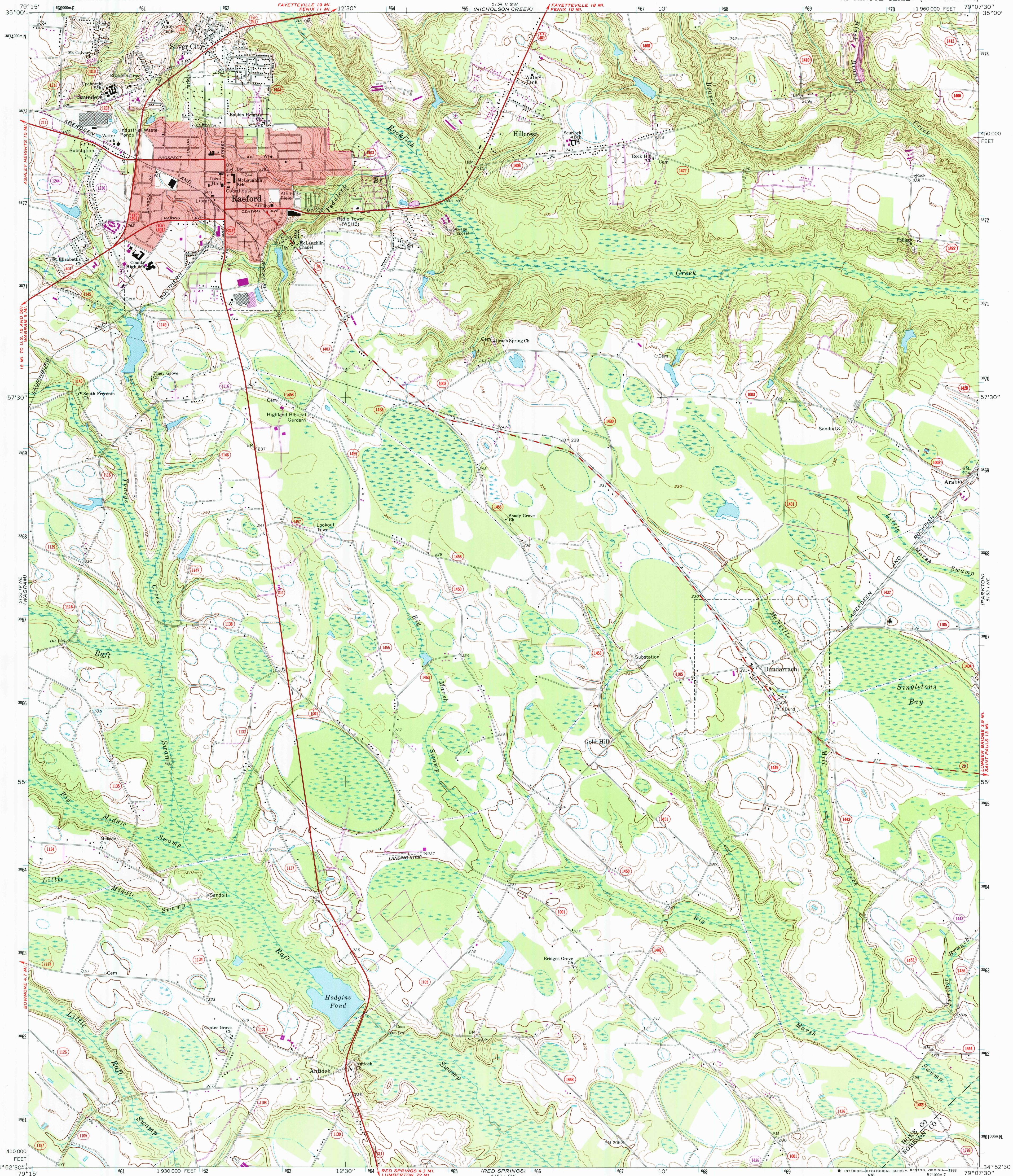


UNITED STATES
DEPARTMENT OF THE INTERIOR
GEOLOGICAL SURVEY

RAEFORD QUADRANGLE
NORTH CAROLINA
7.5 MINUTE SERIES (TOPOGRAPHIC)



Mapped, edited, and published by the Geological Survey

Control by USGS, NOS/NOAA, USCE, and North Carolina Geodetic Survey
Topography by photogrammetric methods from aerial photographs
taken 1971. Field checked 1972

Projection and 10,000-foot grid ticks: North Carolina coordinate system
(Lambert conformal conic). 1000-meter Universal Transverse Mercator grid
ticks, zone 17, shown in blue. 1927 North American Datum.
To place on the predicted North American Datum 1983 move the projection
lines 12 meters south and 22 meters west as shown by
dashed corner ticks

Red tint indicates area in which only landmark buildings are shown

Short dashed blue lines indicate elliptical bay outlines
visible on aerial photographs

Revisions shown in purple and woodland compiled in cooperation
with North Carolina agencies from aerial photographs taken 1981
and other sources. This information not field checked. Map edited 1982

UTM GRID and 1982 MAGNETIC NORTH
DECLINATION AT CENTER OF SHEET

SCALE 1:24 000
1 1000 0 1000 2000 3000 4000 5000 6000 7000 FEET
1 5 0 5 1 KILOMETER

CONTOUR INTERVAL 5 FEET
NATIONAL GEODETIC VERTICAL DATUM OF 1929

THIS MAP COMPLIES WITH NATIONAL MAP ACCURACY STANDARDS
FOR SALE BY U.S. GEOLOGICAL SURVEY
DENVER, COLORADO 80225, OR RESTON, VIRGINIA 22092
A FOLDER DESCRIBING TOPOGRAPHIC MAPS AND SYMBOLS IS AVAILABLE ON REQUEST



ROAD CLASSIFICATION
Primary highway, hard surface
Secondary highway, hard surface
Light duty road, hard or improved surface
Unimproved road
Interstate Route
U.S. Route
State Route

USGS MAP HISTORICAL MAP
OCT 14 1988
REC'D FILE COPY

RAEFORD, N. C.
34079-H2-TF-024

1972
PHOTOREVISED 1982
DMA 5153 1 NW-SERIES V842