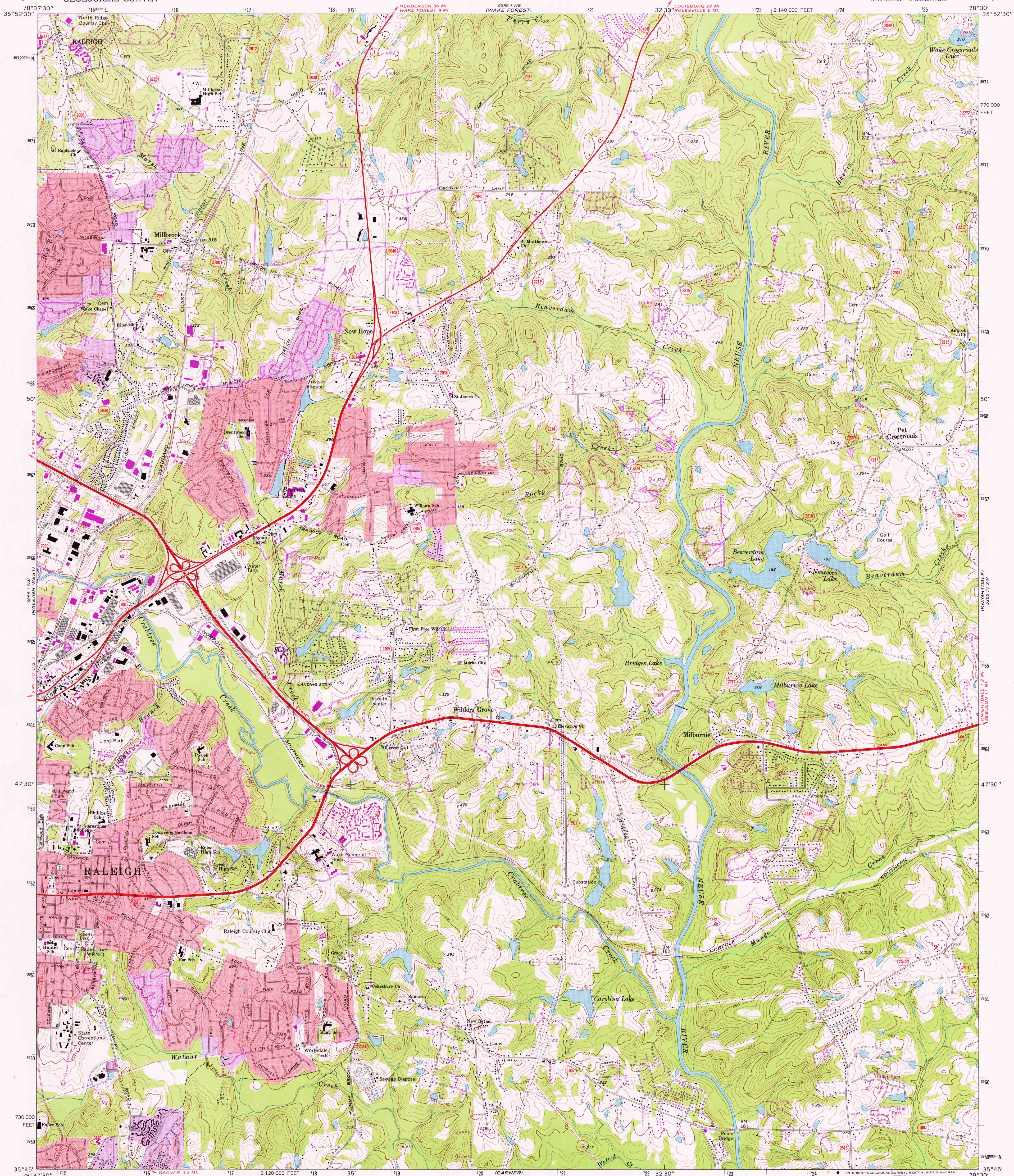
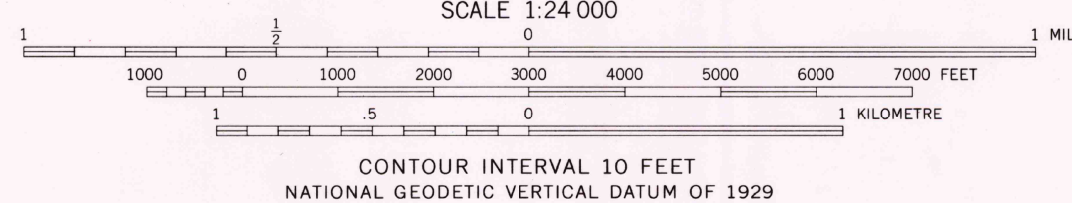
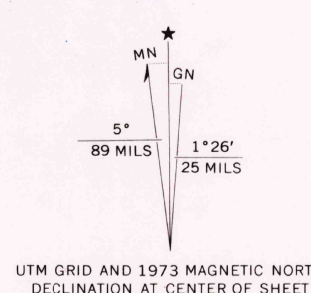


UNITED STATES
DEPARTMENT OF THE INTERIOR
GEOLOGICAL SURVEY

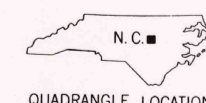
RALEIGH EAST QUADRANGLE
NORTH CAROLINA—WAKE CO.
7.5 MINUTE SERIES (TOPOGRAPHIC)
SE 1/4 RALEIGH 15' QUADRANGLE



Mapped, edited, and published by the Geological Survey
Control by USGS, USC&GS, and North Carolina Geodetic Survey
Topography by photogrammetric methods from aerial
photographs taken 1965 and 1968. Field checked 1968
Polyconic projection. 1927 North American datum
10,000-foot grid based on North Carolina coordinate system
1000-metre Universal Transverse Mercator grid ticks,
zone 17, shown in blue
Red tint indicates areas in which only landmark buildings are shown
Revisions shown in purple compiled from aerial
photographs taken 1973. This information not
field checked
Purple tint indicates extension of urban areas



ROAD CLASSIFICATION
Primary highway, hard surface ——— Light-duty road, hard or improved surface ———
Secondary highway, hard surface ——— Unimproved road ———
Interstate Route ——— U. S. Route ——— State Route ———



RALEIGH EAST, N. C.
SE 1/4 RALEIGH 15' QUADRANGLE
N 3545—W 7830/7.5

USGS
HISTORICAL FILE
TOPOGRAPHIC DIVISION

1968
PHOTOREVISED 1973
AMS 5255 I SE—SERIES V842

MAR 0 5 1976

THIS MAP COMPLIES WITH NATIONAL MAP ACCURACY STANDARDS
FOR SALE BY U. S. GEOLOGICAL SURVEY, RESTON, VIRGINIA 22092
A FOLDER DESCRIBING TOPOGRAPHIC MAPS AND SYMBOLS IS AVAILABLE ON REQUEST