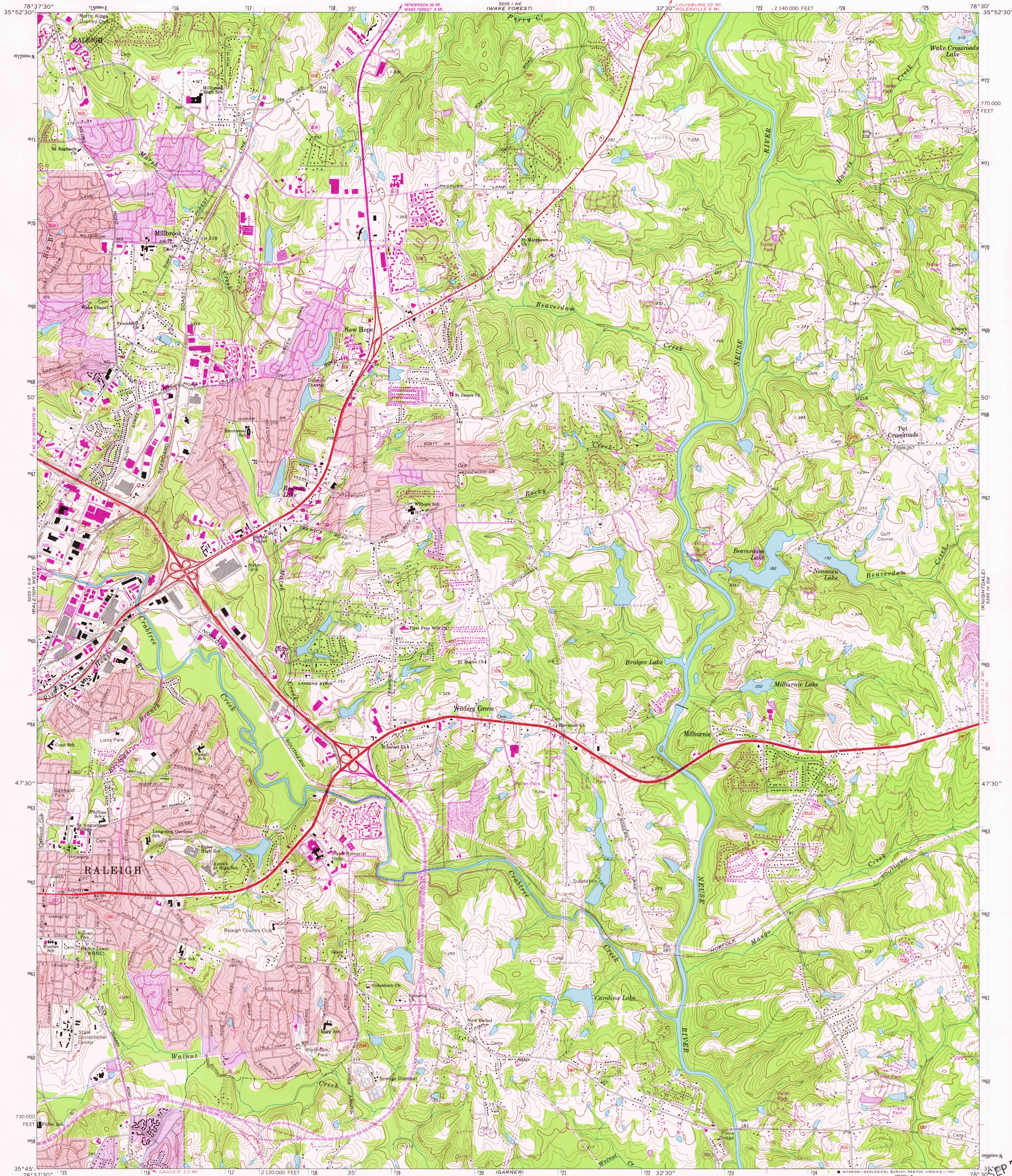


UNITED STATES
DEPARTMENT OF THE INTERIOR
GEOLOGICAL SURVEY

RALEIGH EAST QUADRANGLE
NORTH CAROLINA—WAKE CO.
7.5 MINUTE SERIES (TOPOGRAPHIC)
SE 1/4 RALEIGH 15' QUADRANGLE

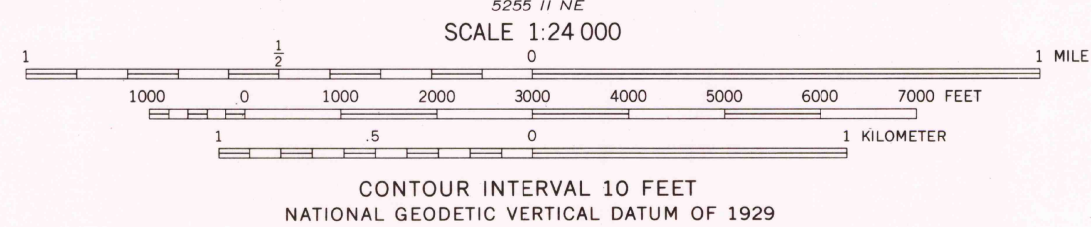
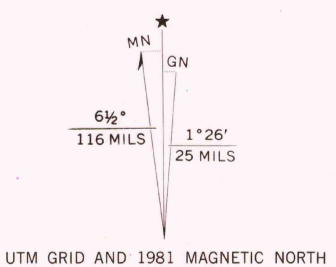


Mapped, edited, and published by the Geological Survey

Control by USGS, NOS/NOAA, and North Carolina Geodetic Survey
Topography by photogrammetric methods from aerial photographs
taken 1965 and 1968. Field checked 1968

Polyconic projection. 10,000-foot grid ticks based on North
Carolina coordinate system. 1000-meter Universal Transverse Mercator
grid ticks, zone 17, shown in blue. 1927 North American Datum
To place on the predicted North American Datum 1983 move the
projection lines 12 meters south and 23 meters west as shown
by dashed corner ticks

Red tint indicates areas in which only landmark buildings are shown
Revisions shown in purple and woodland compiled in
cooperation with State of North Carolina agencies from
aerial photographs taken 1980 and other sources. This
information not field checked. Map edited 1981



THIS MAP COMPLIES WITH NATIONAL MAP ACCURACY STANDARDS
FOR SALE BY U. S. GEOLOGICAL SURVEY, RESTON, VIRGINIA 22092
A FOLDER DESCRIBING TOPOGRAPHIC MAPS AND SYMBOLS IS AVAILABLE ON REQUEST



ROAD CLASSIFICATION	
Primary highway, hard surface	Light-duty road, hard or improved surface
Secondary highway, hard surface	Unimproved road
Interstate Route	U. S. Route
	State Route

RALEIGH EAST, N. C.
SE 1/4 RALEIGH 15' QUADRANGLE
N 3545—W 7830/7.5

RETURN TO:
USGS NMD HISTORICAL MAP ARCHIVES

1968
PHOTOREVISED 1981
DMA 5255 I SE—SERIES V842

SEP 7 1982