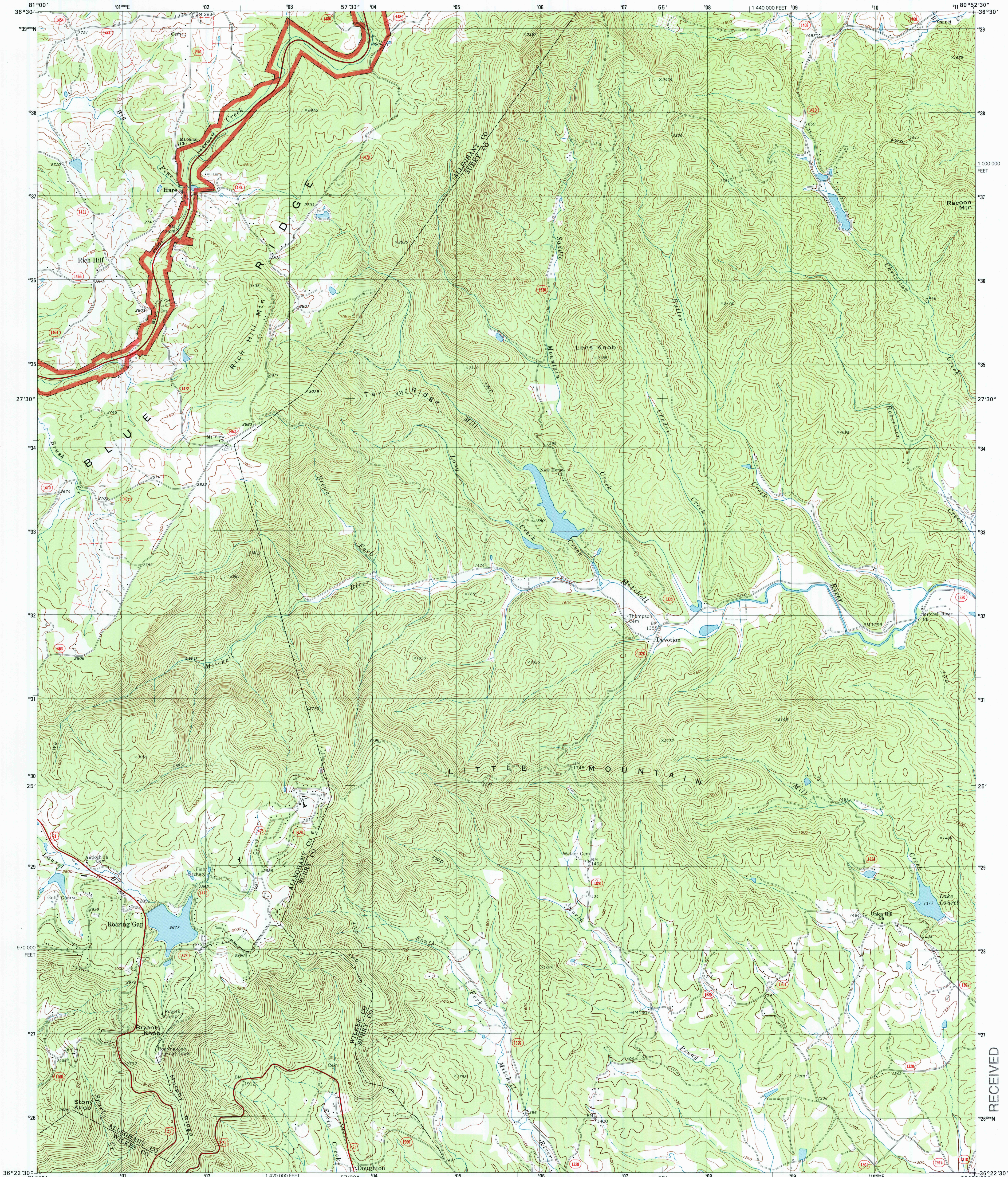




U.S. DEPARTMENT OF THE INTERIOR
U.S. GEOLOGICAL SURVEY

ROARING GAP QUADRANGLE
NORTH CAROLINA
7.5-MINUTE SERIES (TOPOGRAPHIC)



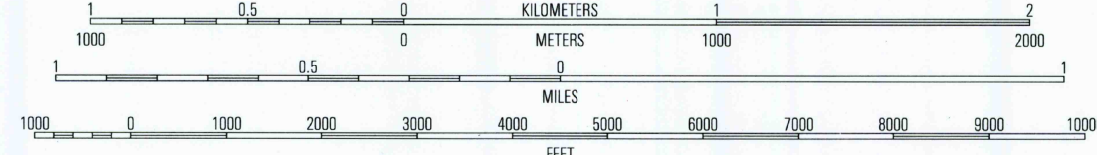
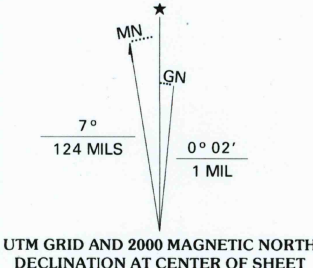
Produced by the United States Geological Survey

Derived from imagery taken 1966 and other sources. Photoinspected using imagery taken 1997; no major culture or drainage changes observed. Survey control current as of 1971. Boundaries verified 2000.

North American Datum of 1927 (NAD 27). Projection and 10 000-foot ticks: North Carolina coordinate system (Lambert conformal conic). 1000-meter Universal Transverse Mercator grid, zone 17.

North American Datum of 1983 (NAD 83) is shown by dashed corner ticks. The values of the shift between NAD 27 and NAD 83 for 7.5-minute intersections are obtainable from National Geodetic Survey NADCON software.

There may be private inholdings within the boundaries of the National or State reservations shown on this map.



CONTOUR INTERVAL 40 FEET
NATIONAL GEODETIC VERTICAL DATUM OF 1929
TO CONVERT FROM FEET TO METERS, MULTIPLY BY 0.3048



1	2	3	1 Sparta East
4	5	6	2 Cumberland Knob
6	7	8	3 Lumburg
			4 Glade Valley
			5 Bottom
			6 Traphill
			7 Thompson
			8 Elkin North

ADJOINING 7.5' QUADRANGLE NAMES

ROAD CLASSIFICATION
Primary highway
hard surface
Secondary highway
hard surface
Light-duty road, hard or
improved surface
Unimproved road
Interstate Route
U.S. Route
State Route

ROARING GAP, NC

1997

NIMA 4856 IV NW-SERIES V842

RECEIVED
JUL 31 2000
USGS NWED
HISTORICAL MAP ARCHIVES

