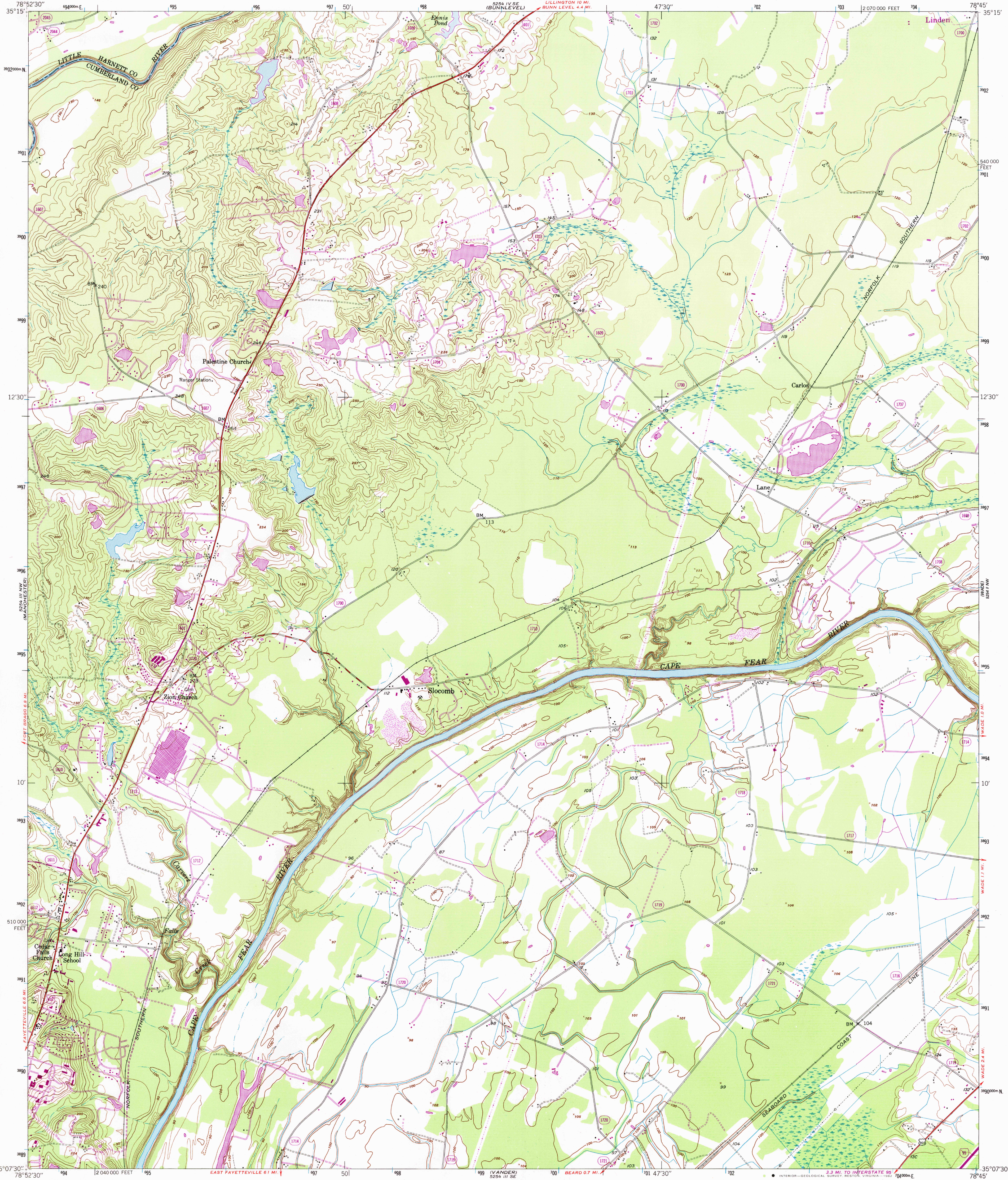


UNITED STATES
DEPARTMENT OF THE INTERIOR
GEOLOGICAL SURVEY

UNITED STATES
DEPARTMENT OF THE ARMY
CORPS OF ENGINEERS

SLOCOMB QUADRANGLE
NORTH CAROLINA
7.5 MINUTE SERIES (TOPOGRAPHIC)
NE4 FAYETTEVILLE 15' QUADRANGLE

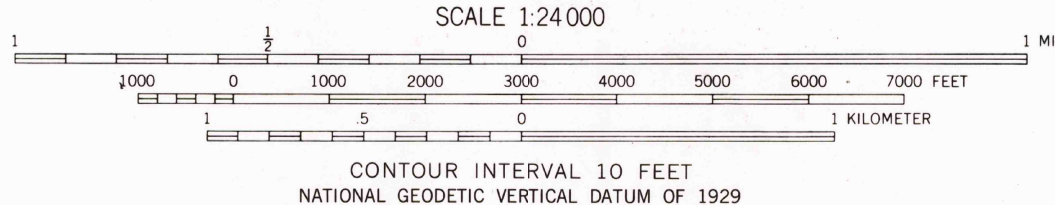
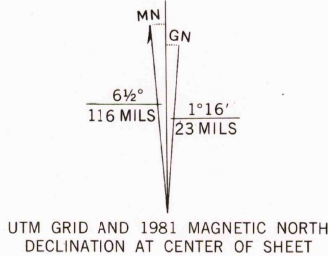


Mapped by the Army Map Service
Edited and published for civil use by the Geological Survey
Control by USGS, NOS/NOAA, and USCE

Topography by photogrammetric methods from aerial photographs
taken 1947. Field checked 1948

Polyconic projection. 10,000-foot grid ticks based on North
Carolina coordinate system. 1000-meter Universal Transverse Mercator
grid ticks, zone 17, shown in blue. 1927 North American Datum
To place on the predicted North American Datum 1983 move the
projection lines 12 meters south and 23 meters west as
shown by dashed corner ticks

Revisions shown in purple and woodland compiled by the
Geological Survey in cooperation with North Carolina agencies
from aerial photographs taken 1980 and other sources. This
information not field checked. Map edited 1981



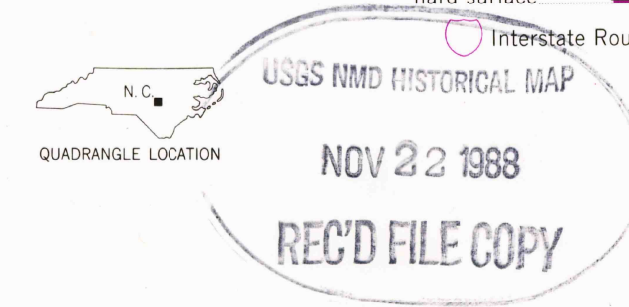
THIS MAP COMPLIES WITH NATIONAL MAP ACCURACY STANDARDS
FOR SALE BY U. S. GEOLOGICAL SURVEY
DENVER, COLORADO 80225, OR RESTON, VIRGINIA 22092
A FOLDER DESCRIBING TOPOGRAPHIC MAPS AND SYMBOLS IS AVAILABLE ON REQUEST

ROAD CLASSIFICATION

Primary highway, hard surface
Secondary highway, hard surface
Unimproved road

Light-duty road, hard or improved surface
Unimproved road

Interstate Route
U. S. Route
State Route



SLOCOMB, N.C.
NE4 FAYETTEVILLE 15' QUADRANGLE
N3507.5-W7845/7.5
1948
PHOTOREVISED 1981
DMA 5254 III NE-SERIES V842