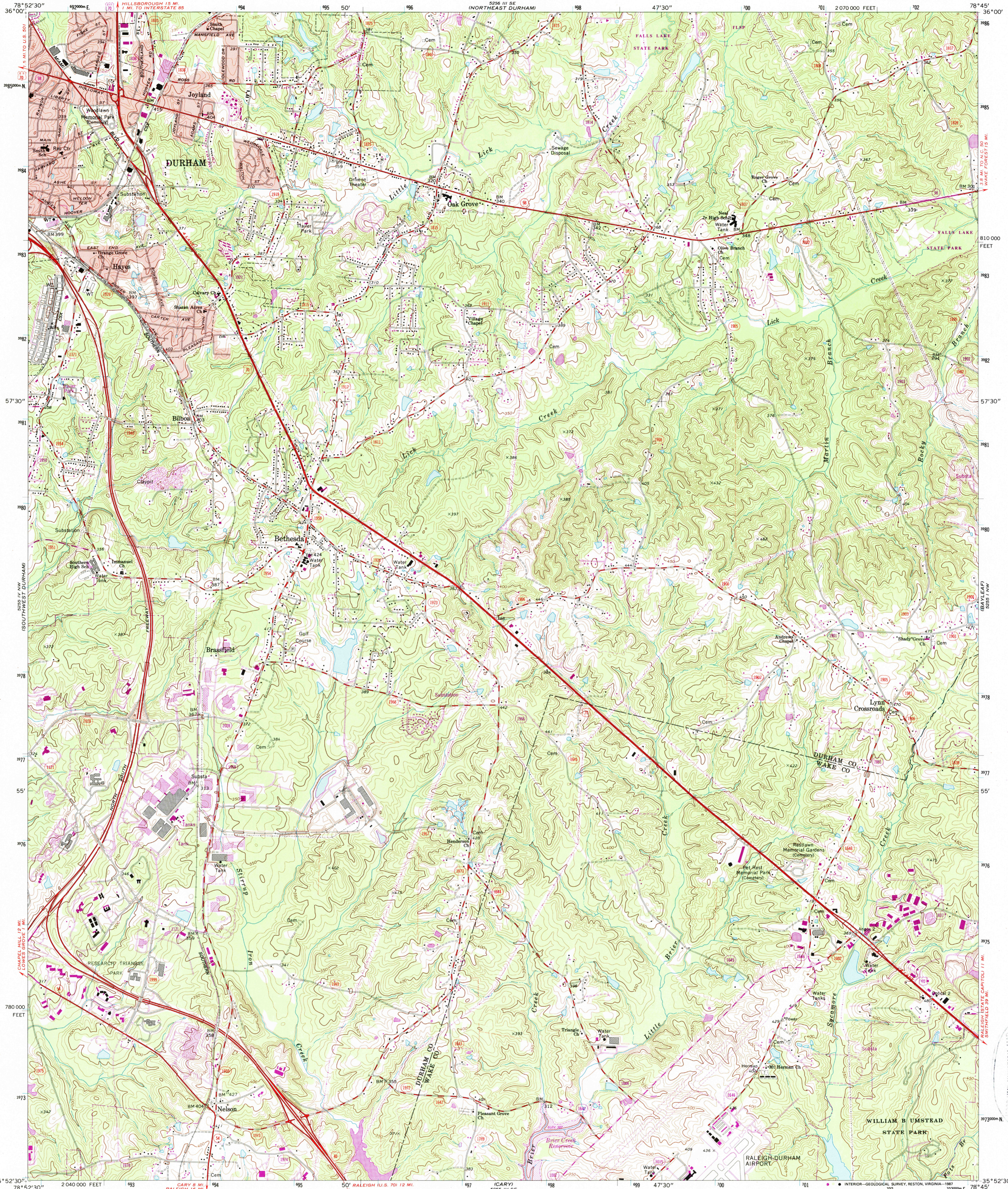


UNITED STATES
DEPARTMENT OF THE INTERIOR
GEOLOGICAL SURVEY

STATE OF NORTH CAROLINA
DEPARTMENT OF NATURAL AND ECONOMIC RESOURCES
RALEIGH, NORTH CAROLINA

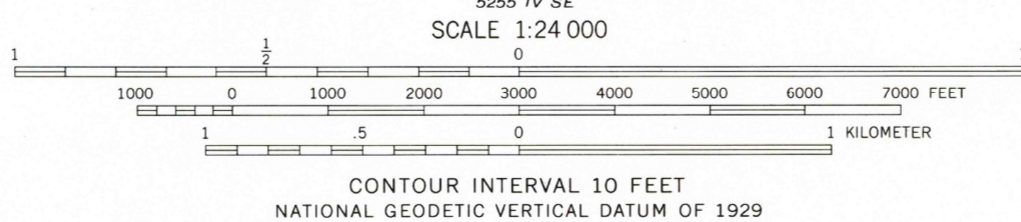
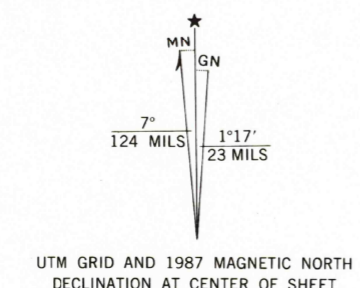
SOUTHEAST DURHAM QUADRANGLE
NORTH CAROLINA
7.5 MINUTE SERIES (TOPOGRAPHIC)
NE 1/4 DURHAM SOUTH 15' QUADRANGLE



Mapped, edited, and published by the Geological Survey
Control by USGS, NOS/NOAA, and North Carolina Geodetic Survey
Topography by photogrammetric methods from aerial photographs
taken 1972. Field checked 1973

Projection and 10,000-foot grid ticks: North Carolina coordinate system
(Lambert conformal conic). 1000-meter Universal Transverse Mercator
grid ticks, zone 17, shown in blue. 1927 North American Datum
To place on the predicted North American Datum 1983 move the
projection lines 11 meters south and 23 meters west as shown
by dashed corner ticks

Fine red dashed lines indicate selected fence and field lines where
generally visible on aerial photographs. This information is unchecked
Red tint indicates areas in which only landmark buildings are shown
There may be private inholdings within the boundaries of
the National or State reservations shown on this map



THIS MAP COMPLIES WITH NATIONAL MAP ACCURACY STANDARDS
FOR SALE BY U.S. GEOLOGICAL SURVEY
DENVER, COLORADO 80225 OR RESTON, VIRGINIA 22092
A FOLDER DESCRIBING TOPOGRAPHIC MAPS AND SYMBOLS IS AVAILABLE ON REQUEST



Revisions shown in purple and woodland compiled in cooperation
with State of North Carolina agencies from aerial photographs taken
1984 and other sources. This information not field checked
Map edited 1987

ROAD CLASSIFICATION
Primary highway, hard surface ———— Improved surface
Secondary highway, hard surface ———— Unimproved road
Interstate Route ———— U. S. Route ———— State Route

SOUTHEAST DURHAM, N. C.
NE 1/4 DURHAM SOUTH 15' QUADRANGLE
35078-H7-TF-024

1973
PHOTOREVISED 1987
DMA 5255 IV NE—SERIES V842

RECD FILE COPY
JUN 10 1988
6886 CON COPY