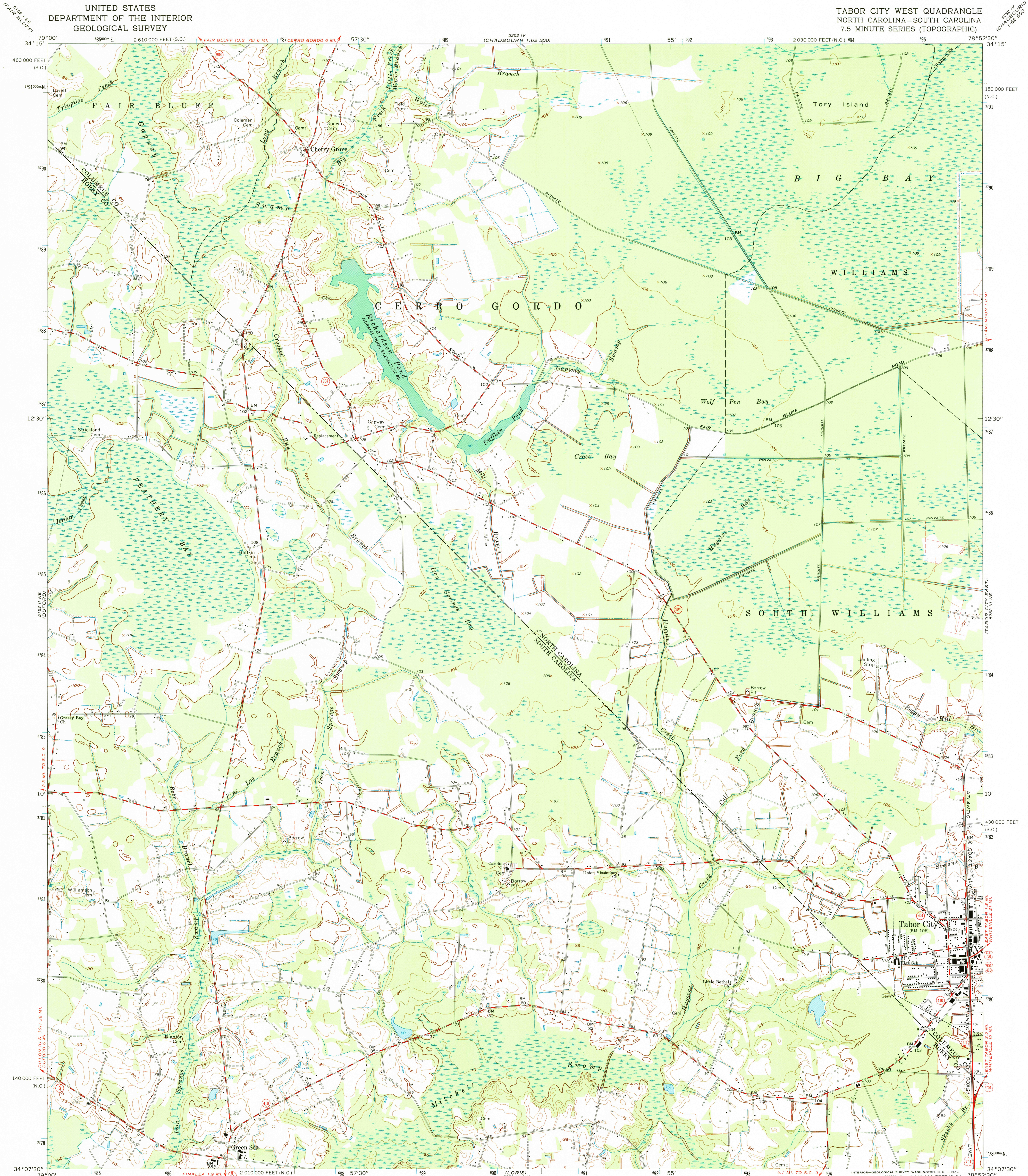
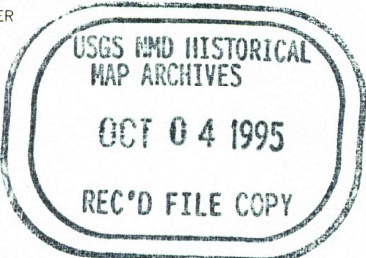
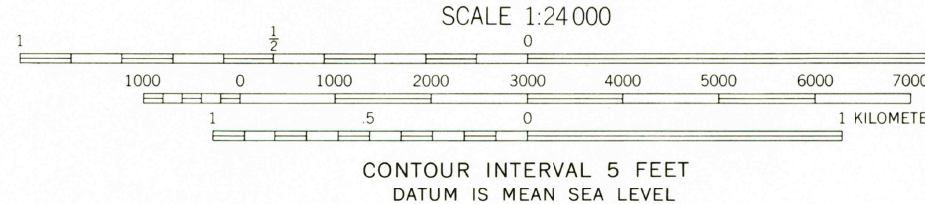
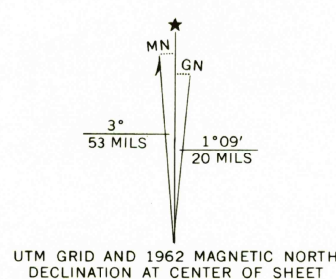


UNITED STATES  
DEPARTMENT OF THE INTERIOR  
GEOLOGICAL SURVEY

TABOR CITY WEST QUADRANGLE  
NORTH CAROLINA—SOUTH CAROLINA  
7.5 MINUTE SERIES (TOPOGRAPHIC)



Mapped, edited, and published by the Geological Survey  
Control by USGS, USC&GS, and South Carolina Geodetic Survey  
Planimetry by photogrammetric methods from aerial photographs  
taken 1951. Topography by planetable surveys 1961 and 1962  
Polyconic projection. 1927 North American datum  
10,000-foot grids based on North Carolina coordinate system,  
and South Carolina coordinate system, north zone  
1000-meter Universal Transverse Mercator grid ticks,  
zone 17, shown in blue  
Fine red dashed lines indicate selected fence and field lines where  
generally visible on aerial photographs. This information is unchecked  
Short dashed blue lines indicate elliptical bay outlines  
visible on aerial photographs



ROAD CLASSIFICATION  
Heavy-duty ——— Light-duty ———  
Medium-duty ——— Unimproved dirt ———  
U.S. Route ——— State Route ———

TABOR CITY WEST, N. C.—S. C.  
N3407.5—W7852.5/7.5

1962  
AMS 5252 III NW—SERIES V842

