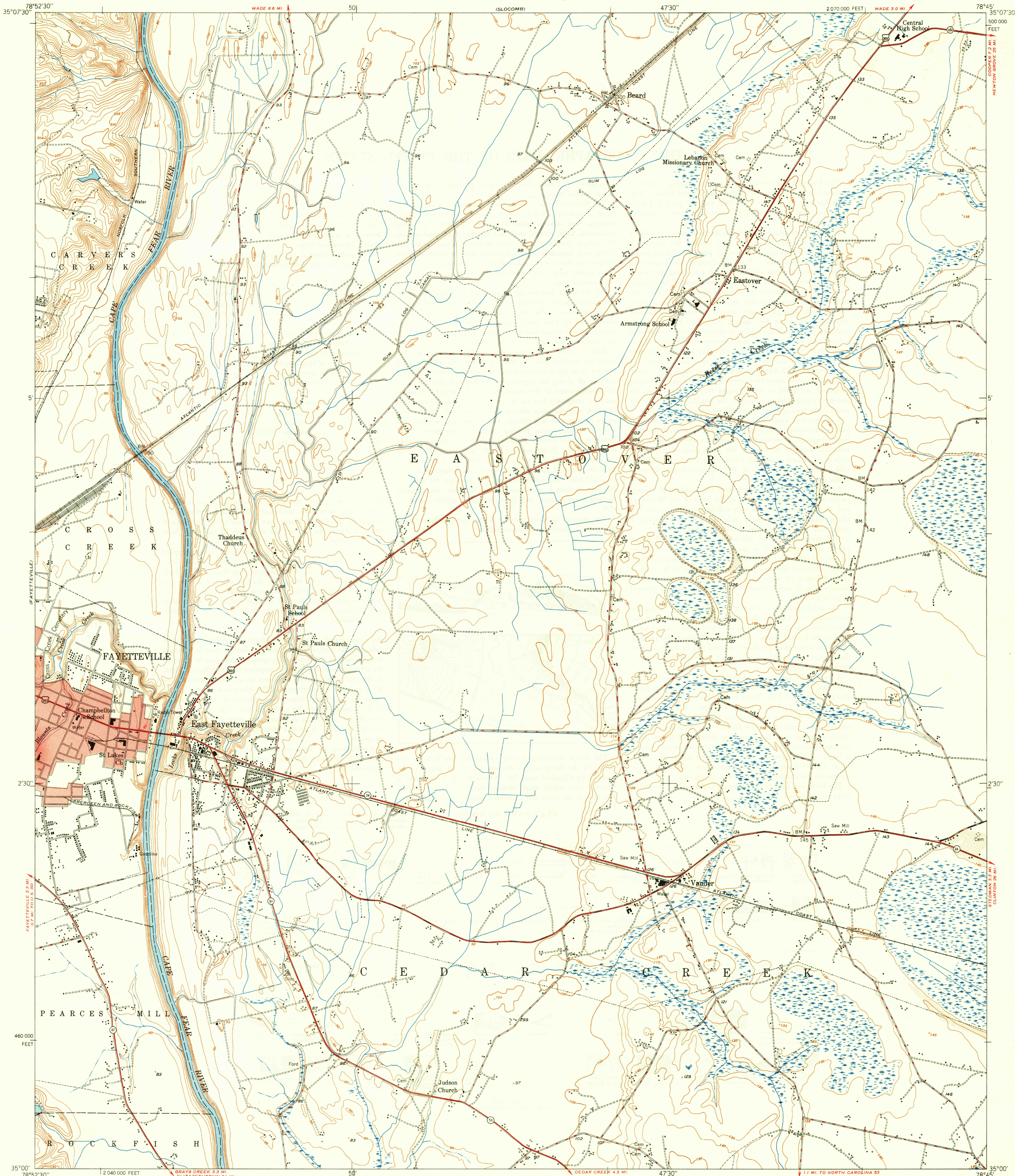


MANCHESTER

UNITED STATES
DEPARTMENT OF THE INTERIOR
GEOLOGICAL SURVEY

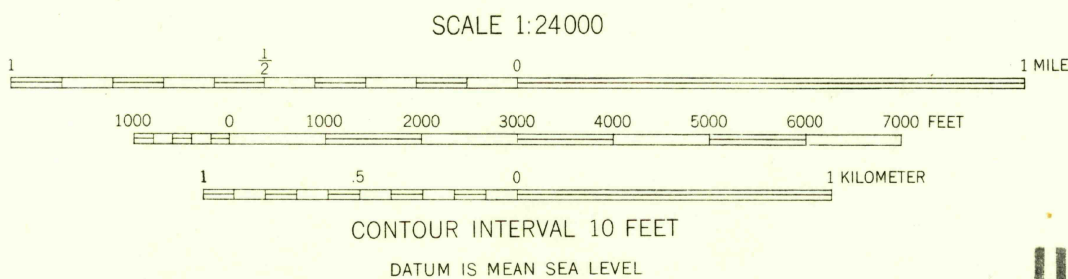
UNITED STATES
DEPARTMENT OF THE ARMY
CORPS OF ENGINEERS

VANDER QUADRANGLE
NORTH CAROLINA-CUMBERLAND CO.
7.5 MINUTE SERIES (TOPOGRAPHIC)



Maped by the Army Map Service
Edited and published for civil use by the Geological Survey
Control by USGS, USC&GS, and CE
Topography from aerial photographs by multiplex methods
Aerial photographs taken 1947. Field check 1948
Polyconic projection. 1927 North American datum
10,000-foot grid based on North Carolina coordinate system
Red tint indicates area in which only landmark buildings are shown
Unchecked elevations shown in brown

TRUE NORTH
MAGNETIC NORTH
APPROXIMATE MEAN
DECLINATION, 1949



ROAD CLASSIFICATION
HARD-SURFACE ALL WEATHER ROADS DRY WEATHER ROADS
Heavy-duty 4 LANE 6 LANE Improved dirt 4 LANE 6 LANE
Medium-duty 4 LANE 6 LANE Unimproved dirt 4 LANE 6 LANE
Loose-surface, graded, or narrow hard-surface 4 LANE 6 LANE
U. S. Route State Route

THIS MAP COMPLIES WITH NATIONAL MAP ACCURACY STANDARDS
FOR SALE BY U. S. GEOLOGICAL SURVEY, WASHINGTON 25, D. C.

HISTORICAL FILES
(DO NOT REMOVE)

VANDER, N. C.
N3500-W7845/7.5
EDITION OF 1949