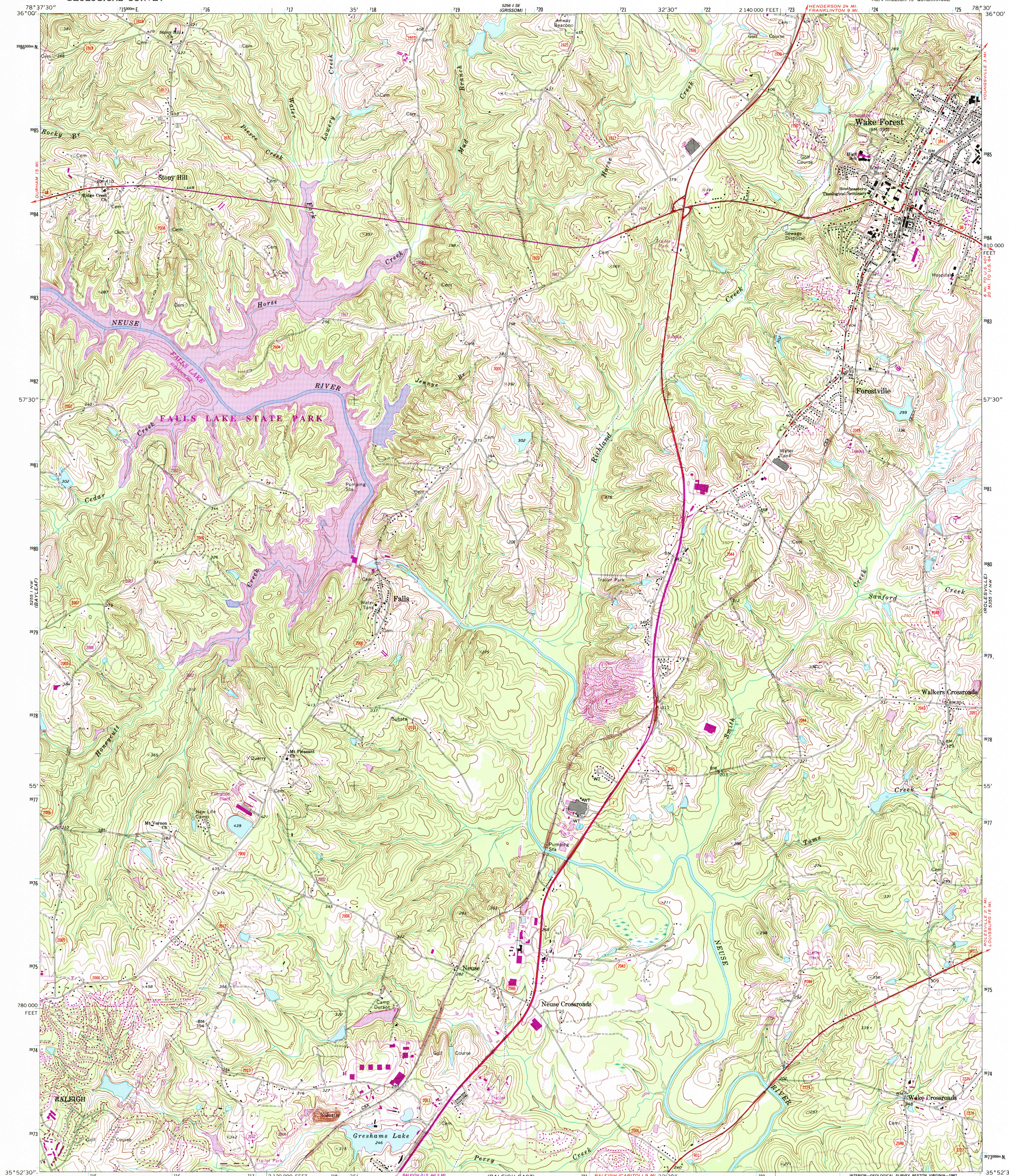
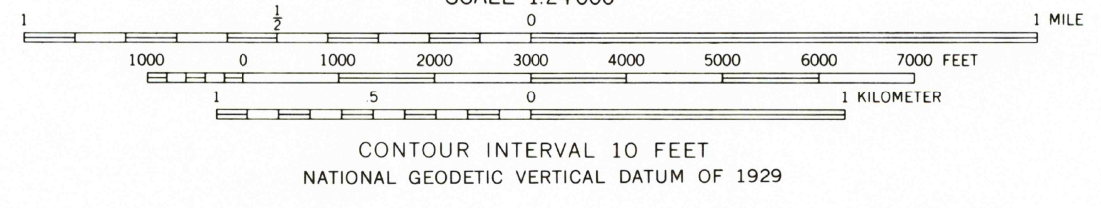
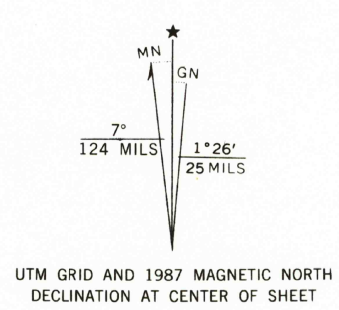


UNITED STATES
DEPARTMENT OF THE INTERIOR
GEOLOGICAL SURVEY

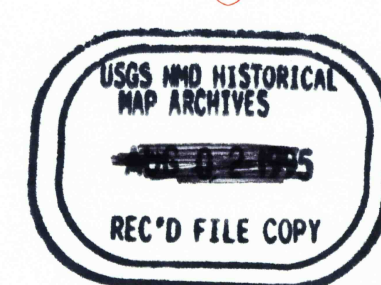
WAKE FOREST QUADRANGLE
NORTH CAROLINA—WAKE CO.
7.5 MINUTE SERIES (TOPOGRAPHIC)
NE 1/4 RALEIGH 15' QUADRANGLE



Mapped, edited, and published by the Geological Survey
Control by USGS, NOS/NOAA, and North Carolina Geodetic Survey
Topography by photogrammetric methods from aerial photographs
taken 1965. Field checked 1967
Polyconic projection. 10,000-foot grid ticks based on North Carolina
coordinate system. 1000-meter Universal Transverse Mercator grid
ticks, zone 17, shown in blue. 1927 North American Datum
To place on the predicted North American Datum 1983 move
the projection lines 12 meters south and 23 meters west
as shown by dashed corner ticks
Fine red dashed lines indicate selected fence and field lines where
generally visible on aerial photographs. This information is unchecked
Revisions shown in purple and woodland compiled in cooperation
with State of North Carolina agencies from aerial photographs taken
1984 and other sources. This information not field checked
Map edited 1987



THIS MAP COMPLIES WITH NATIONAL MAP ACCURACY STANDARDS
FOR SALE BY U. S. GEOLOGICAL SURVEY
DENVER, COLORADO 80225 OR RESTON, VIRGINIA 22092
A FOLDER DESCRIBING TOPOGRAPHIC MAPS AND SYMBOLS IS AVAILABLE ON REQUEST



WAKE FOREST, N. C.
NE 1/4 RALEIGH 15' QUADRANGLE
35078-H5-TF-024
1967
PHOTOREVISED 1987
DMA 5255 I NE—SERIES V842

28 JUL 1995

