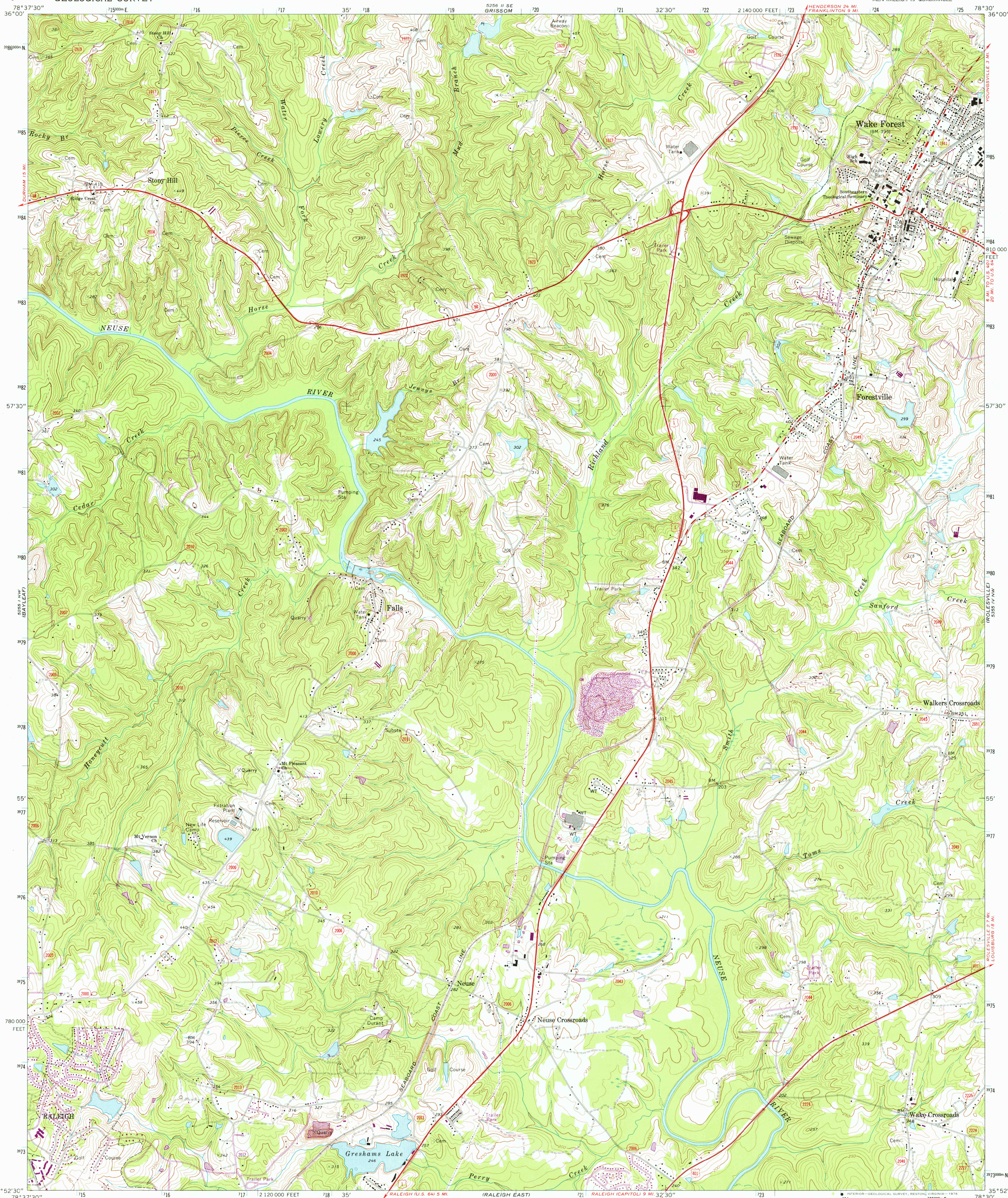
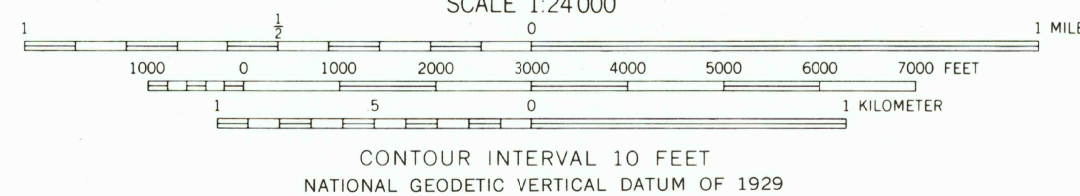
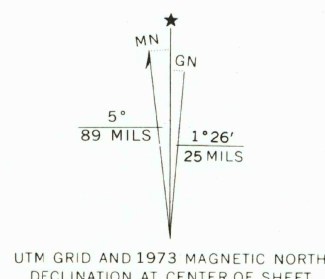


UNITED STATES  
DEPARTMENT OF THE INTERIOR  
GEOLOGICAL SURVEY

WAKE FOREST QUADRANGLE  
NORTH CAROLINA—WAKE CO.  
7.5 MINUTE SERIES (TOPOGRAPHIC)  
NE 1/4 RALEIGH 15' QUADRANGLE



Mapped, edited, and published by the Geological Survey  
Control by USGS, USC&GS, and North Carolina Geodetic Survey  
Topography by photogrammetric methods from aerial  
photographs taken 1965. Field checked 1967  
Polyconic projection. 1927 North American datum  
10,000-foot grid based on North Carolina coordinate system  
1000-meter Universal Transverse Mercator grid ticks,  
zone 17, shown in blue  
Fine red dashed lines indicate selected fence and field lines where  
generally visible on aerial photographs. This information is unchecked  
Revisions shown in purple compiled from aerial  
photographs taken 1973. This information not  
field checked



THIS MAP COMPLIES WITH NATIONAL MAP ACCURACY STANDARDS  
FOR SALE BY U.S. GEOLOGICAL SURVEY, RESTON, VIRGINIA 22092  
A FOLDER DESCRIBING TOPOGRAPHIC MAPS AND SYMBOLS IS AVAILABLE ON REQUEST



ROAD CLASSIFICATION  
Primary highway, hard surface  
Secondary highway, hard surface  
Unimproved road  
U.S. Route  
State Route  
Light-duty road, hard or improved surface  
Interstate Route

USGS  
Historical File  
Topographic Division

WAKE FOREST, N. C.  
NE 1/4 RALEIGH 15' QUADRANGLE  
N3552.5—W7830/7.5  
1967  
PHOTOREVISED 1973  
AMS 5255 1 NE—SERIES V842

MAR 1 1 1976