

582' 15" N
TACKEE

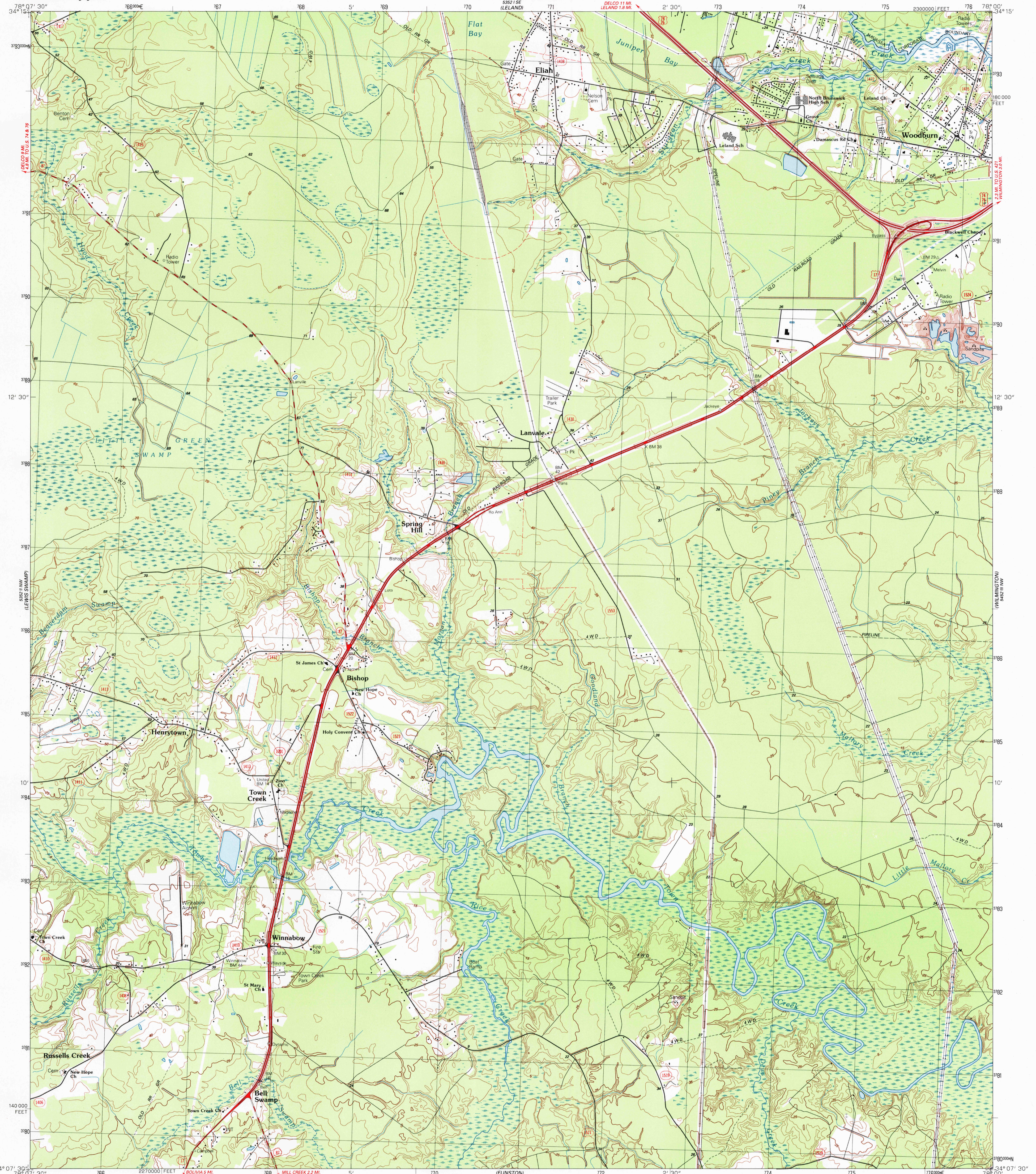


U.S. DEPARTMENT OF THE INTERIOR
U.S. GEOLOGICAL SURVEY

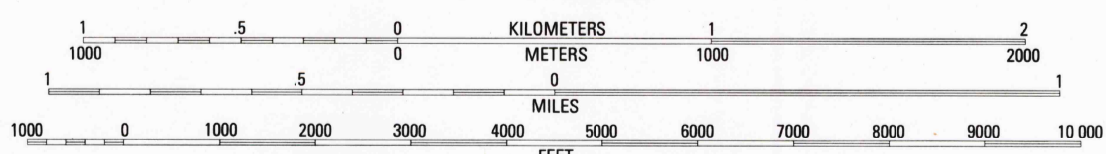
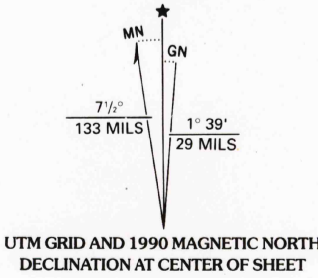
STATE OF NORTH CAROLINA
DEPARTMENT OF NATURAL RESOURCES
AND COMMUNITY DEVELOPMENT
RALEIGH, NORTH CAROLINA

WINNABOW QUADRANGLE
NORTH CAROLINA-BRUNSWICK CO.
7.5 MINUTE SERIES (TOPOGRAPHIC)

582' 15" N
CASTLE HAYNE



Produced by the United States Geological Survey
in cooperation with North Carolina Department of
Natural Resources and Community Development
Control by USGS and NOS/NOAA
Topography by photogrammetric methods from aerial photographs
taken 1987. Field checked 1989. Map edited 1990
Supersedes Army Map Service map dated 1943
Projection and 10,000-foot grid ticks: North Carolina coordinate
system (Lambert conformal conic)
1000-meter Universal Transverse Mercator grid, zone 17
1927 North American Datum
To place on the predicted North American Datum 1983,
move the projection lines 15 meters south and
25 meters west as shown by dashed corner ticks
Short dashed blue lines indicate elliptical bay outlines
visible on aerial photographs
Fine red dashed lines indicate selected fence and field lines where
generally visible on aerial photographs. This information is unchecked



CONTOUR INTERVAL 5 FEET
NATIONAL GEODETIC VERTICAL DATUM OF 1929

THIS MAP COMPLIES WITH NATIONAL MAP ACCURACY STANDARDS
FOR SALE BY U.S. GEOLOGICAL SURVEY
DENVER, COLORADO 80225, OR RESTON, VIRGINIA 22092
A FOLDER DESCRIBING TOPOGRAPHIC MAPS AND SYMBOLS IS AVAILABLE ON REQUEST



ROAD CLASSIFICATION
Primary highway, hard surface Light-duty road, hard or improved surface
Secondary highway, hard surface Unimproved road
Interstate Route U. S. Route State Route

RECEIVED
OCT 3 1 2001
HISTORICAL MAP ARCHIVES

WINNABOW, N.C.
34078-B1-TF-024
1990
DMA 5352 II NE-SERIES V842

