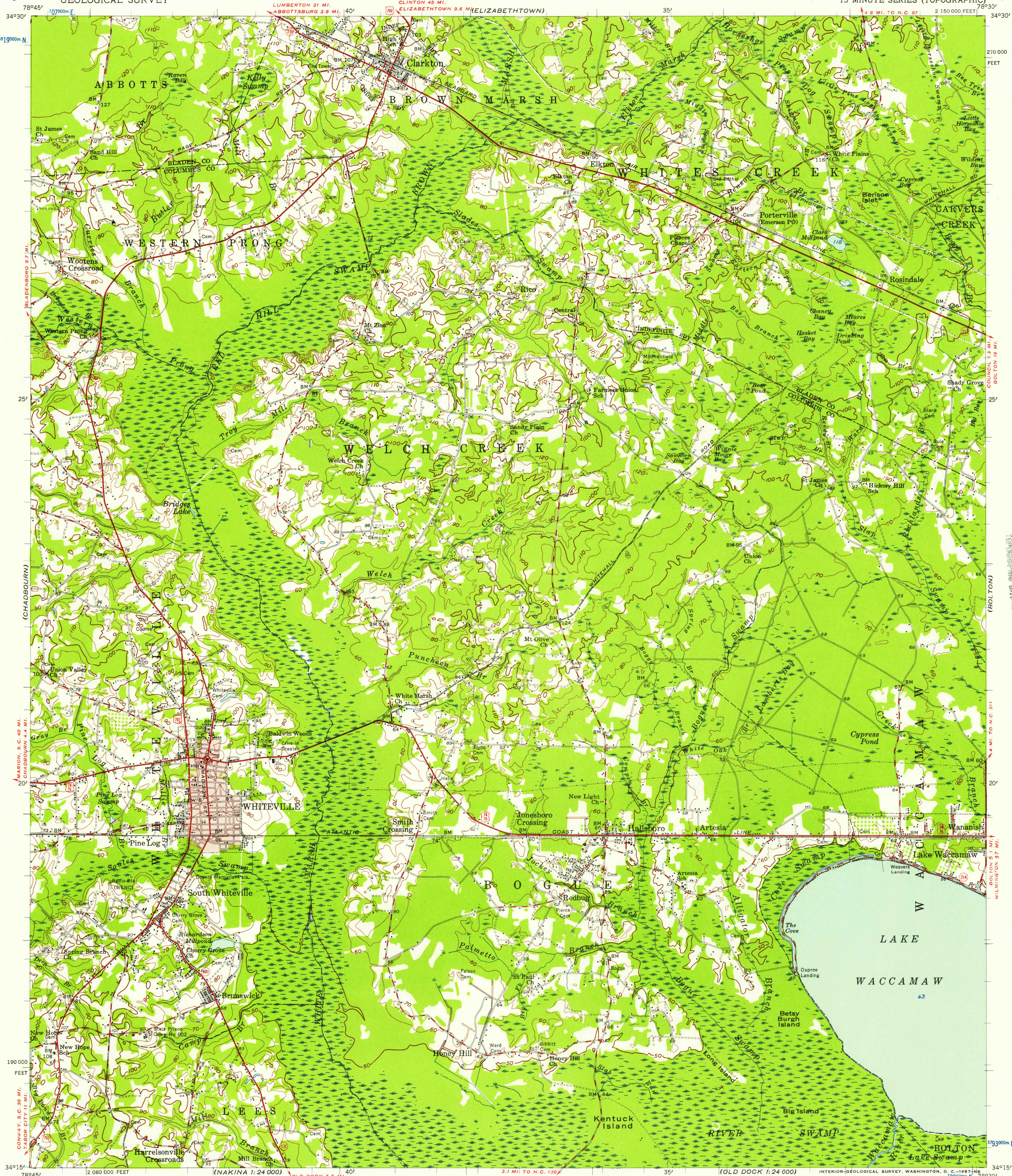


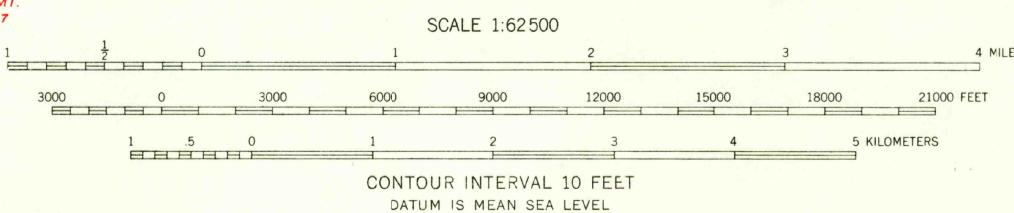
UNITED STATES
DEPARTMENT OF THE INTERIOR
GEOLOGICAL SURVEY

WHITEVILLE QUADRANGLE
NORTH CAROLINA
15 MINUTE SERIES (TOPOGRAPHIC)



Mapped, edited, and published by the Geological Survey
Control by USGS, USC&GS, and USCE
Culture and drainage in part compiled from aerial photographs
taken 1951. Topography by planetable surveys 1955
Polyconic projection. 1927 North American datum
10,000-foot grid based on North Carolina coordinate system
1,000-meter Universal Transverse Mercator grid ticks,
zone 17, shown in blue
Red tint indicates areas in which only
landmark buildings are shown

TRUE NORTH
MAGNETIC NORTH
APPROXIMATE MEAN
DECLINATION, 1955



THIS MAP COMPLIES WITH NATIONAL MAP ACCURACY STANDARDS
FOR SALE BY U.S. GEOLOGICAL SURVEY, WASHINGTON 25, D.C.
A FOLDER DESCRIBING TOPOGRAPHIC MAPS AND SYMBOLS IS AVAILABLE ON REQUEST

USGS
Historical File
Topographic Division



ROAD CLASSIFICATION
Heavy-duty ——— Light-duty ———
Medium-duty ——— Unimproved dirt ———
U. S. Route —○— State Route —○—

FILE COPY
U.S.G.S.
TOPOGRAPHIC DIVISION

WHITEVILLE, N. C.
N 3415—W 7830/15

1955
HISTORICAL

AUG 14 1957

2340