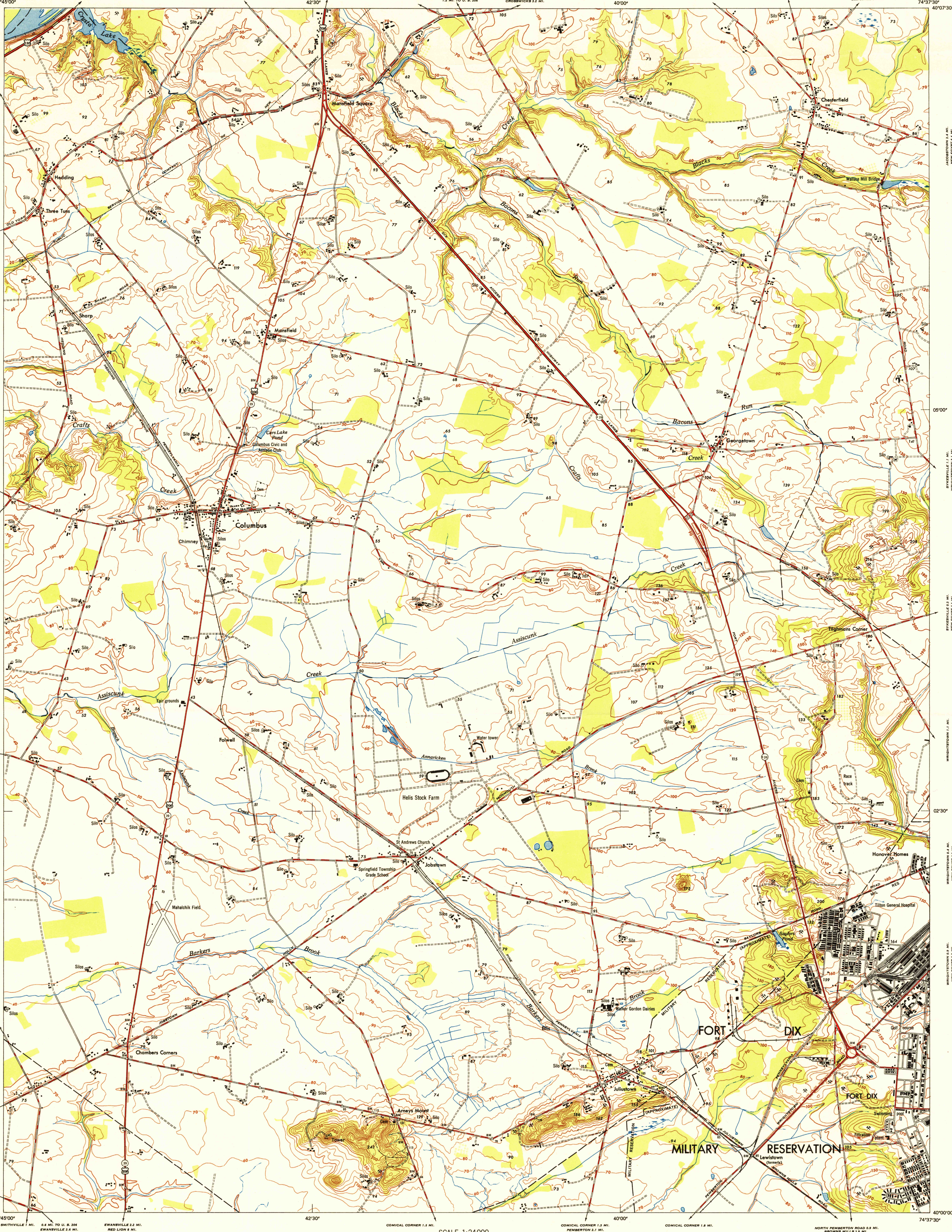
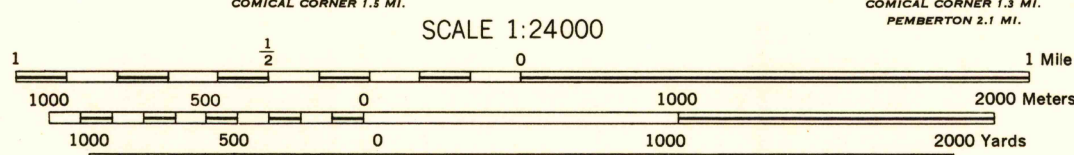


U.S.G.S.
FILE COPY
Inspection and RatingU.S.G.S.
FILE COPY
Inspection and RatingU.S.G.S.
FILE COPY
Inspection and RatingU.S.G.S.
FILE COPY
Inspection and Rating

AMS 3, 1948

Prepared under the direction of the Chief of Engineers by the Army Map Service (AM), Corps of Engineers, Department of the Army, Washington, D. C. Compiled in 1948 by stereophotogrammetric (multiplex) methods by reference to New Jersey, 1:25,000, AMS, Columbus, 1944. Aerial photography April 1947. Horizontal and vertical control by USGS, USGS, CE and New Jersey Geodetic Control Survey. Map field checked.

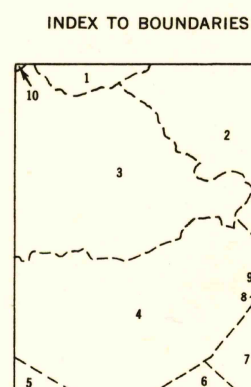
LEGEND	
ROAD DATA 1948	
In developed areas, only through roads are classified	
Hard surface, heavy duty road, more than two lanes wide	Loose surface, graded and drained, or narrow hard surface road
Hard surface, heavy duty road, two lanes wide; Federal route marker	Improved dirt road or street
Hard surface, medium duty road, more than two lanes wide	Unimproved dirt road
Hard surface, medium duty road, two lanes wide; State route marker	Trail
RAILROADS	
Standard gauge	Single track Double track
Narrow gauge	Horizontal control point
Railroad in street	Bench mark monument
Carline	Bench mark non-monumented
BOUNDARIES	Spot elevation in feet
National	Cemetery
State (with monument)	Woods or brushwood
County	Orchard
Township borough	Vineyard
Corporate limits	Intermittent lake
Reservation	Intermittent stream; Dam
Military reservation	Swamp, marsh
	Rapids; Falls
	Large rapids and falls



CONTOUR INTERVAL 10 FEET
DATUM IS 1929 MEAN SEA LEVEL
TRANSVERSE MERCATOR PROJECTION
NAD 83 NORTH AMERICAN DATUM

REPRINTED FROM MILITARY EDITION FOR CIVIL USE 1949
SOLD AND DISTRIBUTED BY U. S. GEOLOGICAL SURVEY, WASHINGTON 25, D. C.

APPROXIMATE MEAN DECLINATION, 1948

Burlington County
1. Burlington Township
2. Chesterfield Township
3. Mansfield Township
4. Springfield Township
5. Easton Township
6. Pemberton Township
7. New Hope Township
8. Wrightstown Borough
9. North Haver Township
10. Newbold Island Under State Bureau of Navigation and Waterways—Boundary Indefinite

COLUMBUS, NEW JERSEY

BURLINGTON COUNTY

N4000-W7437.5/7.5

NOV 1949

3225