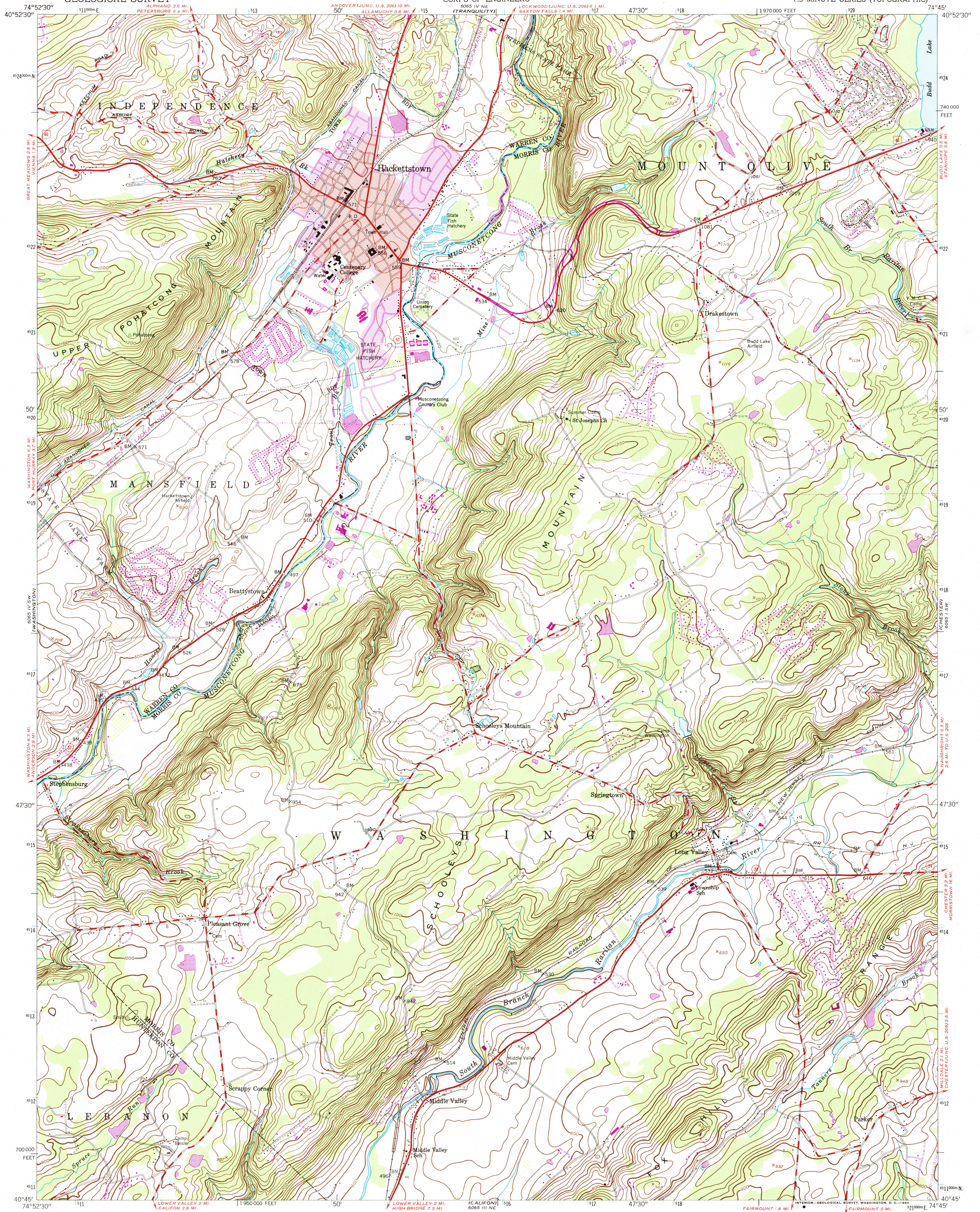


UNITED STATES
DEPARTMENT OF THE INTERIOR
GEOLOGICAL SURVEY

UNITED STATES
DEPARTMENT OF THE ARMY
CORPS OF ENGINEERS

HACKETTSTOWN QUADRANGLE
NEW JERSEY
7.5 MINUTE SERIES (TOPOGRAPHIC)



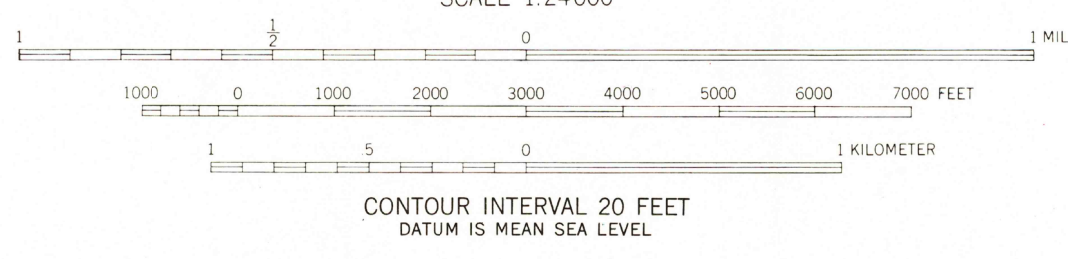
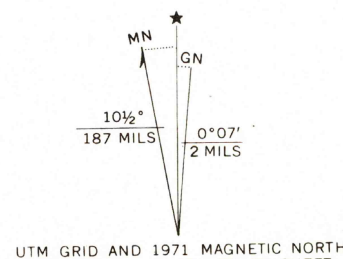
Map by the Army Map Service
Edited and published by the Geological Survey
Control by USGS, USC&GS, and New Jersey Geodetic Survey
Topography from aerial photographs by stereophotogrammetric methods. Aerial photographs taken 1942. Field check 1943
Culture revised by the Geological Survey 1953

Polyconic projection. 1927 North American datum
10,000-foot grid based on New Jersey coordinate system
1000 meter Universal Transverse Mercator grid ticks,
zone 18, shown in blue

Red tint indicates area in which only
landmark buildings are shown

Revisions shown in purple compiled by the Geological Survey
from aerial photographs taken 1971. This information
not field checked

Purple tint indicates extension of urban areas



THIS MAP COMPLIES WITH NATIONAL MAP ACCURACY STANDARDS
FOR SALE BY U. S. GEOLOGICAL SURVEY, WASHINGTON, D. C. 20242
A FOLDER DESCRIBING TOPOGRAPHIC MAPS AND SYMBOLS IS AVAILABLE ON REQUEST

Map photoinspected 1976
No major culture or drainage changes observed



QUADRANGLE LOCATION

ROAD CLASSIFICATION	
Primary highway, hard surface	Light-duty road, hard or improved surface
Secondary highway, hard surface	Unimproved road
Interstate Route	U. S. Route
	State Route

HACKETTSTOWN, N. J.
N4045-W7445/7.5
PHOTOINSPECTED 1976
1953
PHOTOREVISED 1971
AMS 6065 IV SE-SERIES V822

RETURN TO:
USGS AND HISTORICAL MAP ARCHIVES