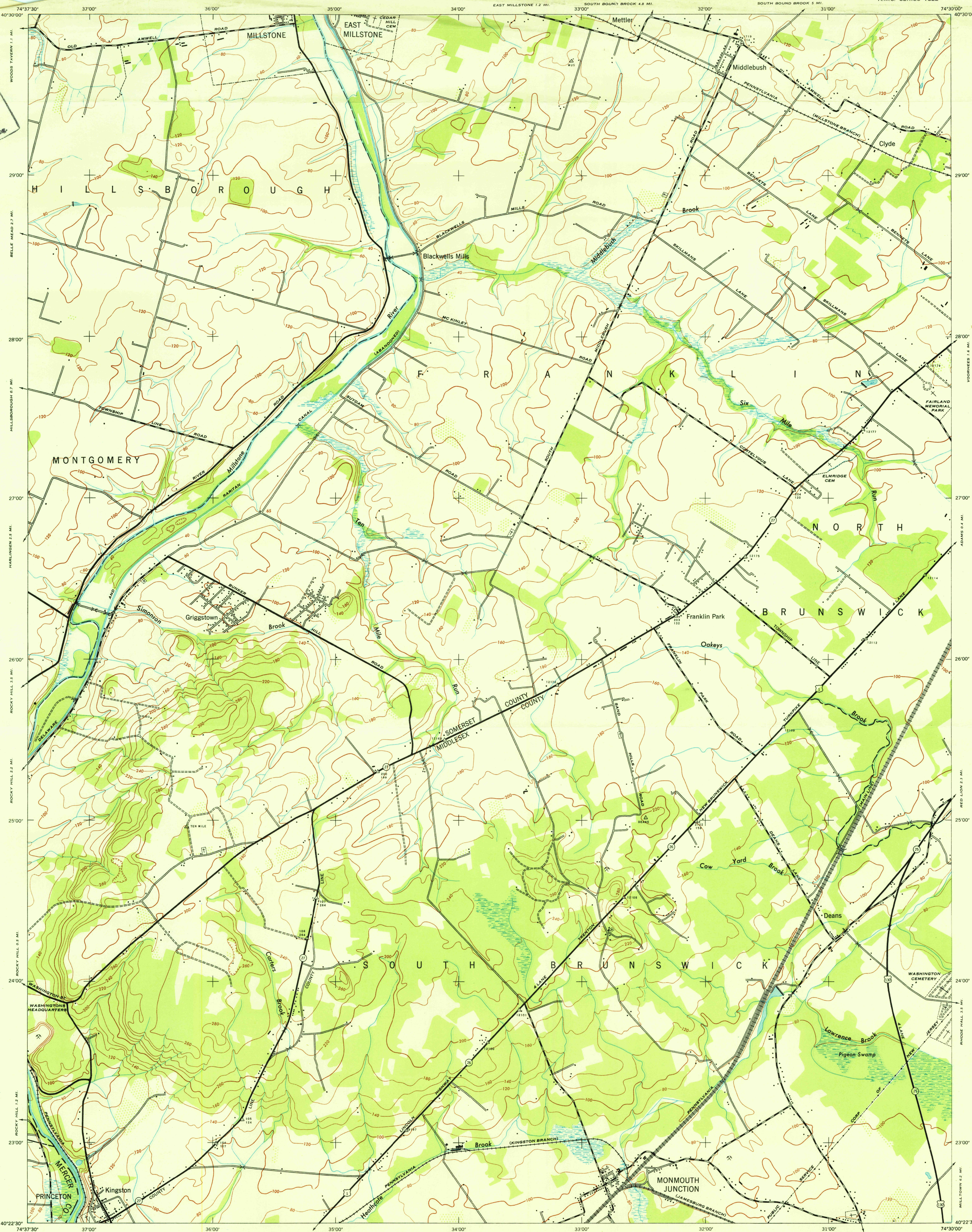
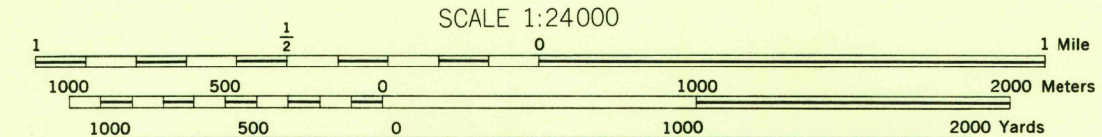
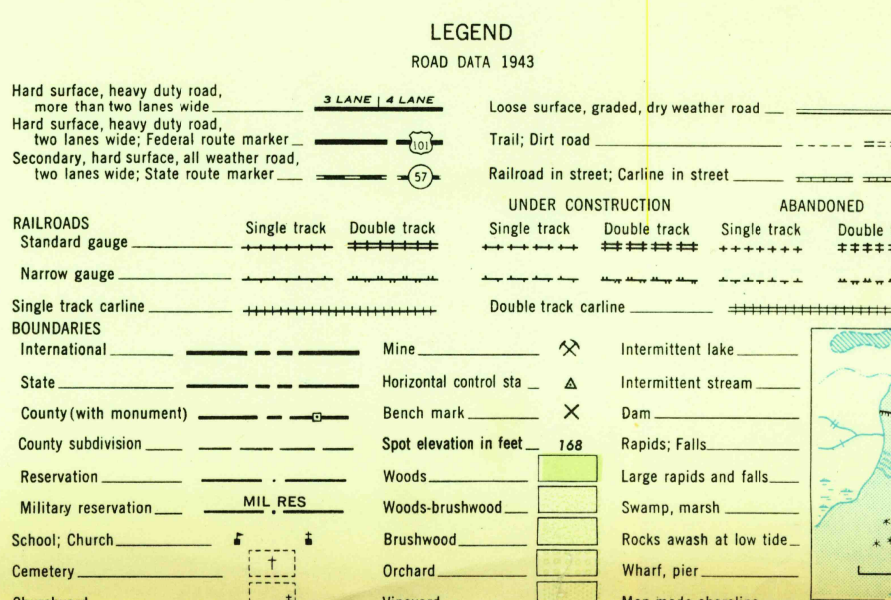


U.S.G.S.
FILE COPY
Topographic and Bathymetric



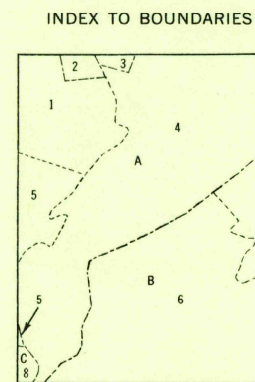
First Edition (AMS 1), 1944; (AMS 2), 1947.

Prepared under the direction of the Chief of Engineers by the Army Map Service (AM), War Department, Washington, D. C. Marginal data revised and Universal Transverse Mercator Grid added, 1947. Copied in 1947 from New Jersey 1:25,000, AMS, Monmouth Junction, 1944. Original map compiled by the Army Map Service by stereophotogrammetric methods. Horizontal and vertical control by USGS, USGS, AMS and New Jersey Geodetic Control Survey. Aerial photography by the Army Map Service, 1942-1943.



CONTOUR INTERVAL 20 FEET
DATUM IS MEAN SEA LEVEL
TRANSVERSE MERCATOR PROJECTION
1927 NORTH AMERICAN DATUM

REPRINTED FROM MILITARY EDITION FOR CIVIL USE 1950
SOLD AND DISTRIBUTED BY U. S. GEOLOGICAL SURVEY, WASHINGTON 25, D. C.



INDEX TO ADJOINING SHEETS

Sheet 6064 I NE falls within NK 10-11	Sheet 6064 I NE falls within NK 10-11
AMS V850, 1:250,000	AMS V850, 1:250,000

U.S.G.S.
Historical File
Topographic Division

U.S.G.S.
FILE COPY
Topographic and Bathymetric

MONMOUTH JUNCTION, NEW JERSEY
N4022.5-W7430.7.5