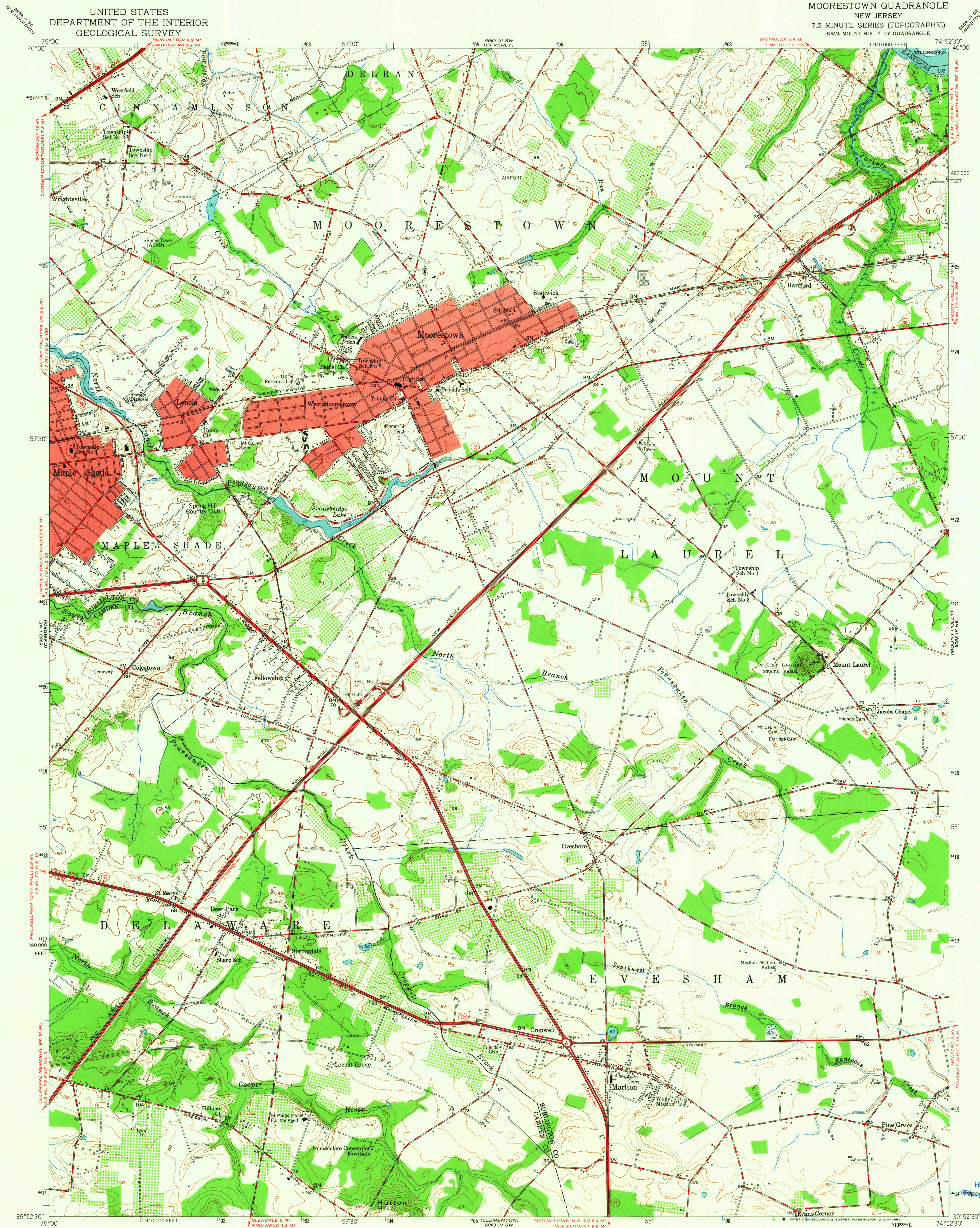
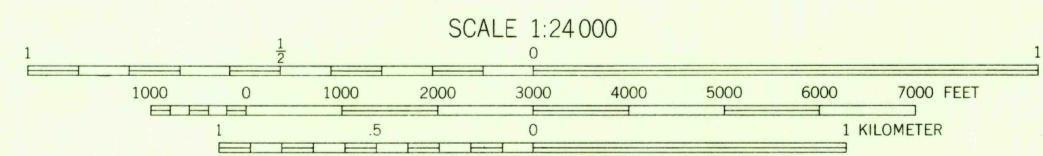
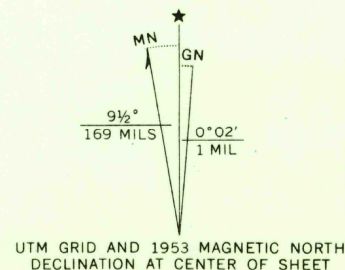


UNITED STATES
DEPARTMENT OF THE INTERIOR
GEOLOGICAL SURVEY

MOORESTOWN QUADRANGLE
NEW JERSEY
7.5 MINUTE SERIES (TOPOGRAPHIC)
NW/4 MOUNT HOLLY 15' QUADRANGLE



Mapped, edited, and published by the Geological Survey
Control by USC&GS and New Jersey Geodetic Survey
Culture and drainage in part compiled from aerial photographs
taken 1951. Topography from plane-table surveys 1953
Polyconic projection. 1927 North American datum
10,000-foot grid based on New Jersey coordinate system
Red tint indicates areas in which only
landmark buildings are shown
1000-meter Universal Transverse Mercator grid ticks,
zone 18, shown in blue



CONTOUR INTERVAL 10 FEET
DATUM IS MEAN SEA LEVEL

THIS MAP COMPLIES WITH NATIONAL MAP ACCURACY STANDARDS
FOR SALE BY U. S. GEOLOGICAL SURVEY, WASHINGTON 25, D. C.
A FOLDER DESCRIBING TOPOGRAPHIC MAPS AND SYMBOLS IS AVAILABLE ON REQUEST

ROAD CLASSIFICATION
Heavy-duty ——— 4 LANE 6 LANE ——— Light-duty ———
Medium-duty ——— 4 LANE 6 LANE ——— Unimproved dirt ———
U. S. Route ——— State Route ———

MOORESTOWN, N. J.
NW/4 MOUNT HOLLY 15' QUADRANGLE
N 3952 5-W7452 5/7.5

1953

AMS 6063 IV NW-SERIES V822

U.S.G.S.
TOPOGRAPHIC DIVISION

JAN 1 5 1965
4240