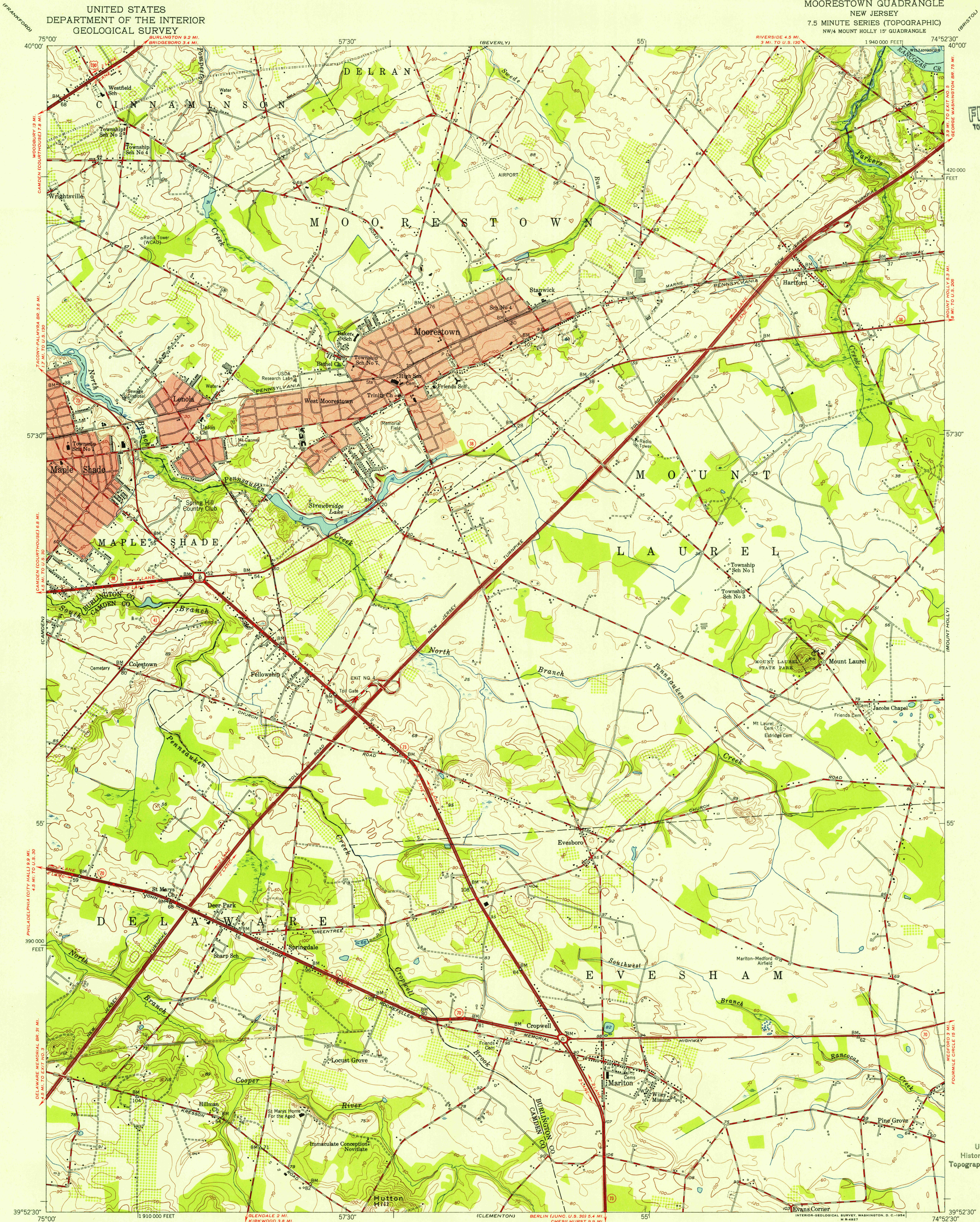


UNITED STATES
DEPARTMENT OF THE INTERIOR
GEOLOGICAL SURVEY

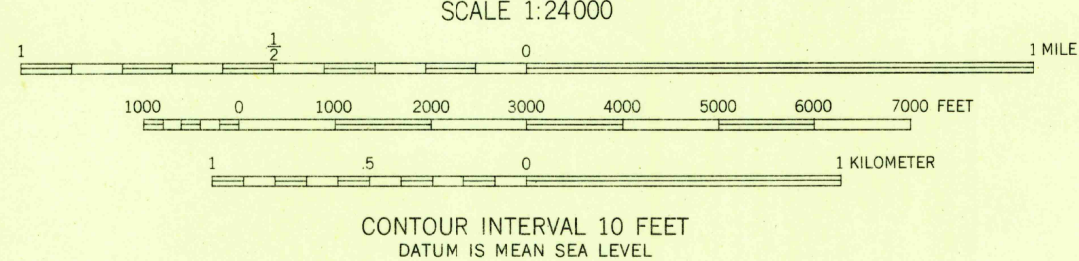
MOORESTOWN QUADRANGLE
NEW JERSEY
7.5 MINUTE SERIES (TOPOGRAPHIC)
NW/4 MOUNT HOLLY 15' QUADRANGLE

U.S.G.S.
FILE COPY
TOPOGRAPHIC DIVISION



Mapped, edited, and published by the Geological Survey
Control by USC&GS and New Jersey Geodetic Survey
Culture and drainage in part compiled from aerial photographs
taken 1951. Topography from plane-table surveys 1953
Polyconic projection. 1927 North American datum
10,000-foot grid based on New Jersey coordinate system
Red tint indicates areas in which only
landmark buildings are shown

APPROXIMATE MEAN
DECLINATION, 1953



THIS MAP COMPLIES WITH NATIONAL MAP ACCURACY STANDARDS
FOR SALE BY U. S. GEOLOGICAL SURVEY, WASHINGTON 25, D. C.
A FOLDER DESCRIBING TOPOGRAPHIC MAPS AND SYMBOLS IS AVAILABLE ON REQUEST



ROAD CLASSIFICATION
Heavy-duty ———— + LANE 6 LANE Light-duty ————
Med. um-duty ———— + LANE 6 LANE Unimproved dirt ————
U. S. Route ———— State Route ————

MOORESTOWN, N. J.
NW/4 MOUNT HOLLY 15' QUADRANGLE
N 3952.5—W 7452.5/7.5

1953

U.S.G.S.
FILE COPY
TOPOGRAPHIC DIVISION
OCT 13 1954

4185