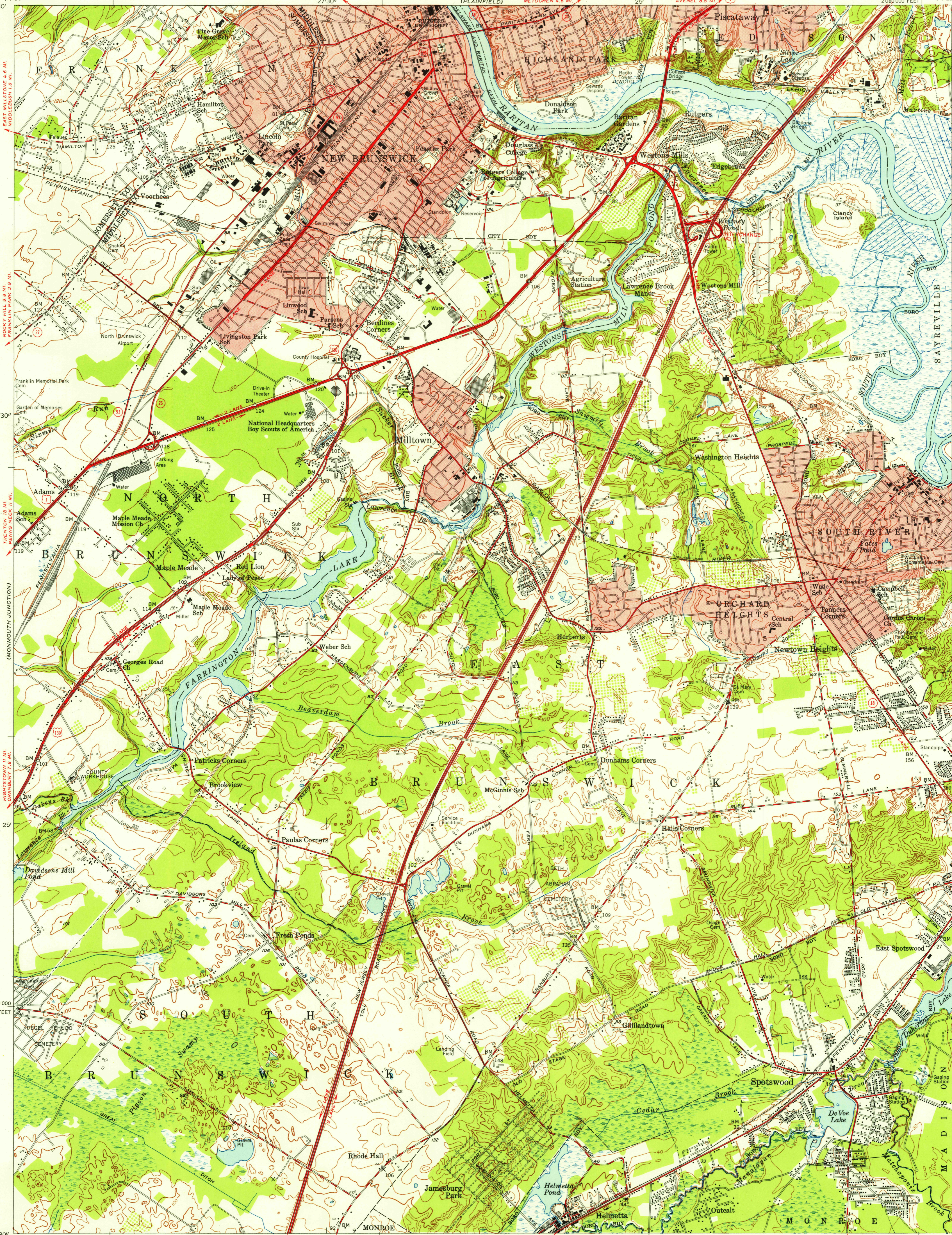
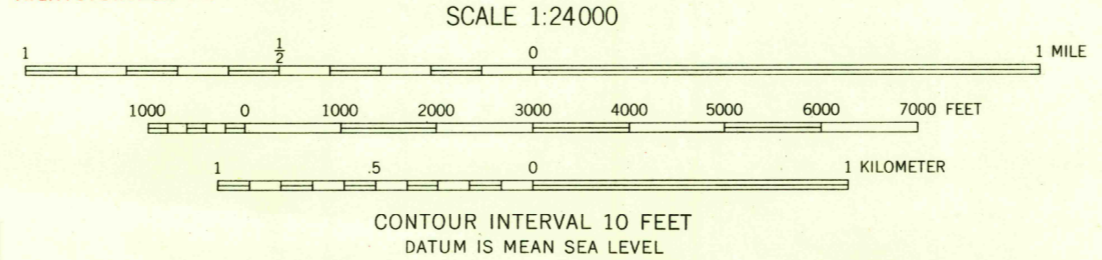
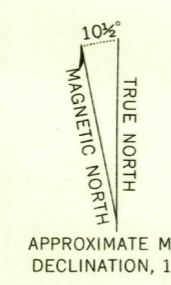


U.S.G.S.
FILE COPY
TOPOGRAPHIC DIVISION



Mapped, edited, and published by the Geological Survey
Control by USGS, USC&GS, USCE, and New Jersey Geodetic Survey
Topography by plane-table surveys 1939. Revised 1953-1954.
Polyconic projection. 1927 North American datum
10,000-foot grid based on New Jersey coordinate system
Red tint indicates areas in which only
landmark buildings are shown



ROAD CLASSIFICATION
Heavy-duty ————— Light-duty —————
Medium-duty ————— Unimproved dirt —————
U. S. Route ———— State Route ————

NEW BRUNSWICK, N. J.
N 4022.5 - W 7422.5/7.5

1954
MAR 16 1956

THIS MAP COMPLIES WITH NATIONAL MAP ACCURACY STANDARDS
FOR SALE BY U. S. GEOLOGICAL SURVEY, WASHINGTON 25, D. C.
A FOLDER DESCRIBING TOPOGRAPHIC MAPS AND SYMBOLS IS AVAILABLE ON REQUEST

USGS
Historical File
Topographic Division

U.S.G.S.
FILE COPY
TOPOGRAPHIC DIVISION