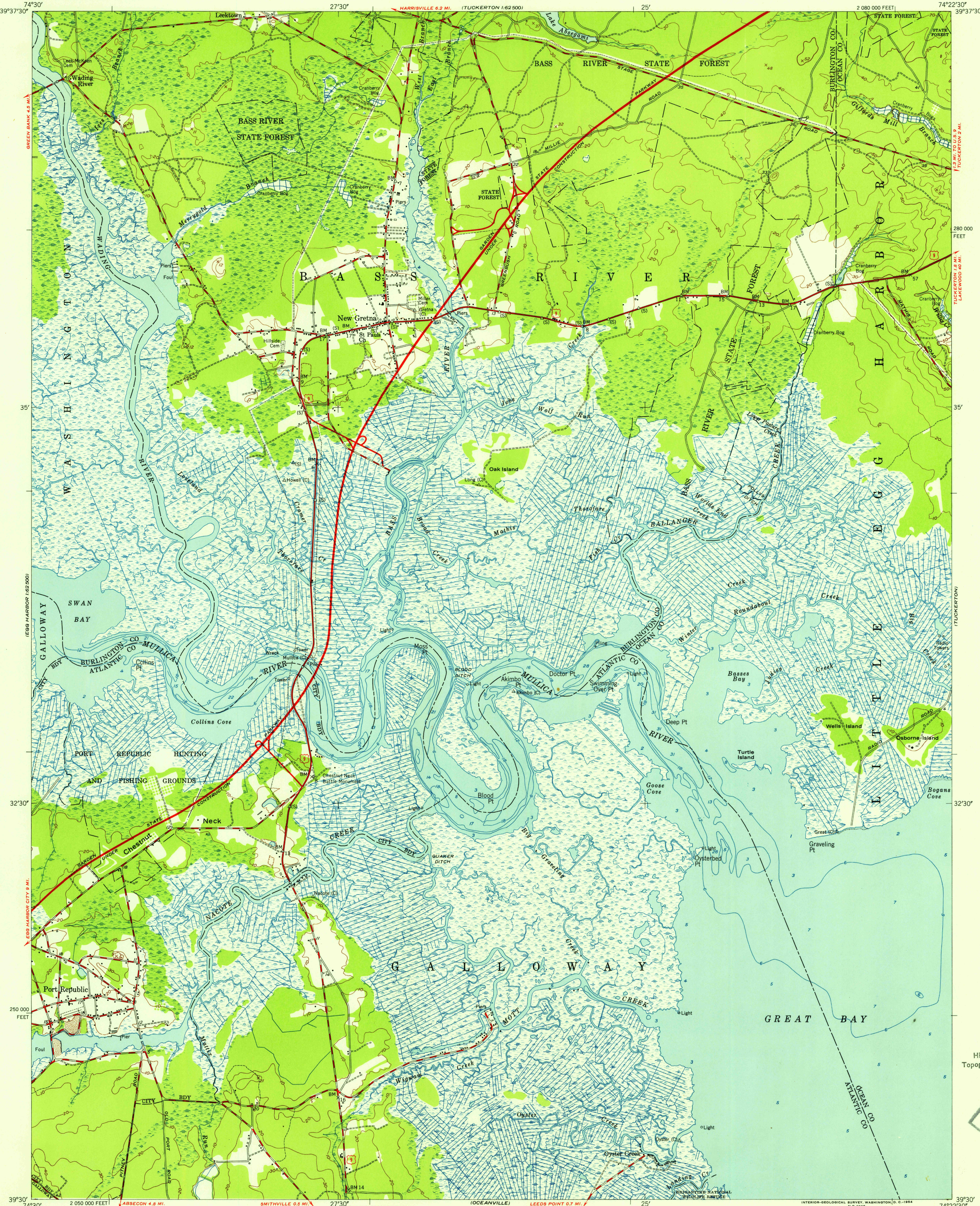


UNITED STATES
DEPARTMENT OF THE INTERIOR
GEOLOGICAL SURVEY

UNITED STATES
DEPARTMENT OF COMMERCE
COAST AND GEODETIC SURVEY

NEW GRETTA QUADRANGLE
NEW JERSEY
7.5 MINUTE SERIES (TOPOGRAPHIC)
SW/4 TUCKERTON 15' QUADRANGLE



Mapped by the U.S. Coast & Geodetic Survey
Edited and published by the Geological Survey

Control by USC&GS (C), and New Jersey
Geodetic Control Survey (S)

Culture and drainage in part compiled from aerial
photographs taken 1950. Topography by plane-table
surveys 1950. Field check 1951
Hydrography from surveys dated 1935

Polycyclic projection. 1927 North American datum
10,000-foot grid based on New Jersey coordinate system

Alignment of Garden State Parkway
supplied by New Jersey Highway Authority

APPROXIMATE MEAN
DECLINATION, 1951

SCALE 1:24,000
1 0 1000 2000 3000 4000 5000 6000 7000 FEET
1 0 5 10 KILOMETER

CONTOUR INTERVAL 10 FEET
DATUM IS MEAN SEA LEVEL
DEPTH CURVES AND SOUNDINGS IN FEET-DATUM IS MEAN LOW WATER
SHORELINE SHOWN REPRESENTS THE APPROXIMATE LINE OF MEAN HIGH WATER
THE MEAN RANGE OF TIDE IS 3 FEET

THIS MAP COMPLIES WITH NATIONAL MAP ACCURACY STANDARDS
FOR SALE BY U.S. GEOLOGICAL SURVEY, WASHINGTON 25, D.C.
A FOLDER DESCRIBING TOPOGRAPHIC MAPS AND SYMBOLS IS AVAILABLE ON REQUEST

ROAD CLASSIFICATION
Heavy-duty ——— 4 LANE 16 LANE Light-duty ———
Medium-duty ——— 4 LANE 16 LANE Unimproved dirt ———
U.S. Route State Route

NEW GRETTA, N.J.
SW/4 TUCKERTON 15' QUADRANGLE
N3930-W7422 5/7.5

1951

USGS
Historical File
Topographic Division

FILE COPY
Inscribed and Indexed

JUL 12 1954