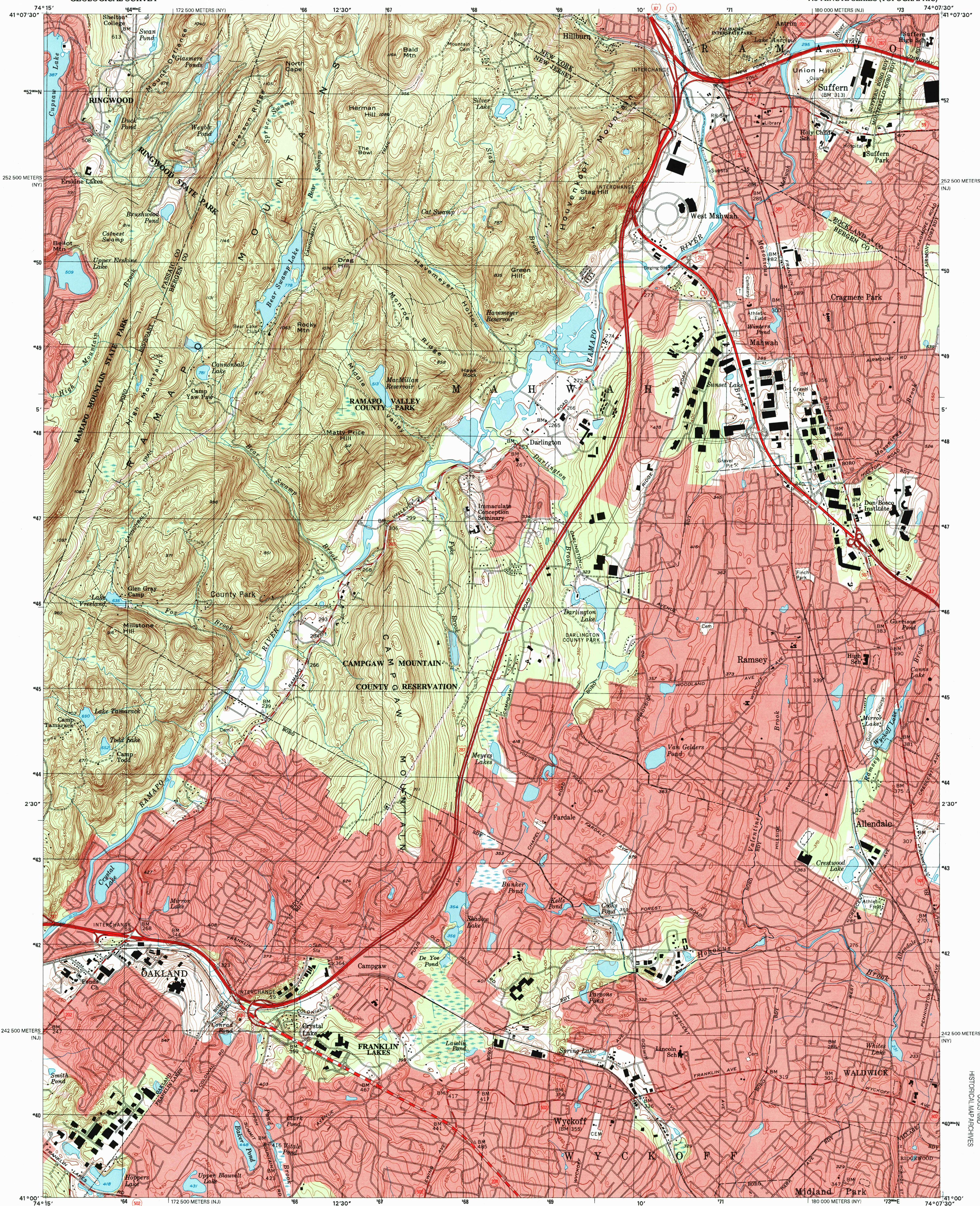
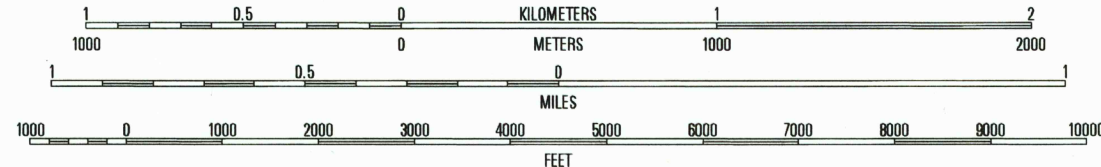
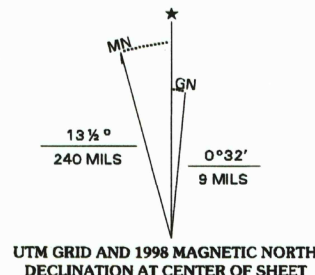


UNITED STATES
DEPARTMENT OF THE INTERIOR
GEOLOGICAL SURVEY

RAMSEY QUADRANGLE
NEW JERSEY-NEW YORK
7.5-MINUTE SERIES (TOPOGRAPHIC)



Produced by the United States Geological Survey
Topography compiled 1943. Planimetry derived from imagery taken 1995. Survey control current as of 1995.
North American Datum of 1983 (NAD 83). Projection and 1 000-meter grid: Universal Transverse Mercator, zone 18 2 500-meter ticks: New Jersey Coordinate System of 1983 and New York Coordinate System of 1983 (east zone).
North American Datum of 1927 (NAD 27) is shown by dashed corner ticks. The values of the shift between NAD 83 and NAD 27 for 7.5-minute intersections are obtainable from National Geodetic Survey NADCON software.
There may be private inholdings within the boundaries of the National or State reservations shown on this map.
Landmark buildings verified 1995.



CONTOUR INTERVAL 10 FEET
NATIONAL GEODETIC VERTICAL DATUM OF 1929
TO CONVERT FROM FEET TO METERS, MULTIPLY BY 0.3048



QUADRANGLE LOCATION

1	2	3
4	5	6
7	8	

- 1 Greenwood Lake
- 2 Skaneateles
- 3 Thruway
- 4 Wanaque
- 5 Park Ridge
- 6 Pompton Plains
- 7 Paterson
- 8 Hackensack

- ROAD CLASSIFICATION
- Primary highway hard surface
 - Secondary highway hard surface
 - Light-duty road, hard or improved surface
 - Unimproved road
 - Interstate Route
 - U.S. Route
 - State Route

RAMSEY, NJ-NY
1995

NIMA 6166 II SW-SERIES V822

FOR SALE BY U.S. GEOLOGICAL SURVEY, P.O. BOX 25286, DENVER, COLORADO 80225
A FOLDER DESCRIBING TOPOGRAPHIC MAPS AND SYMBOLS IS AVAILABLE ON REQUEST

RECEIVED
DEC 3 1 1998
USGS WND
HISTORICAL MAP ARCHIVES

