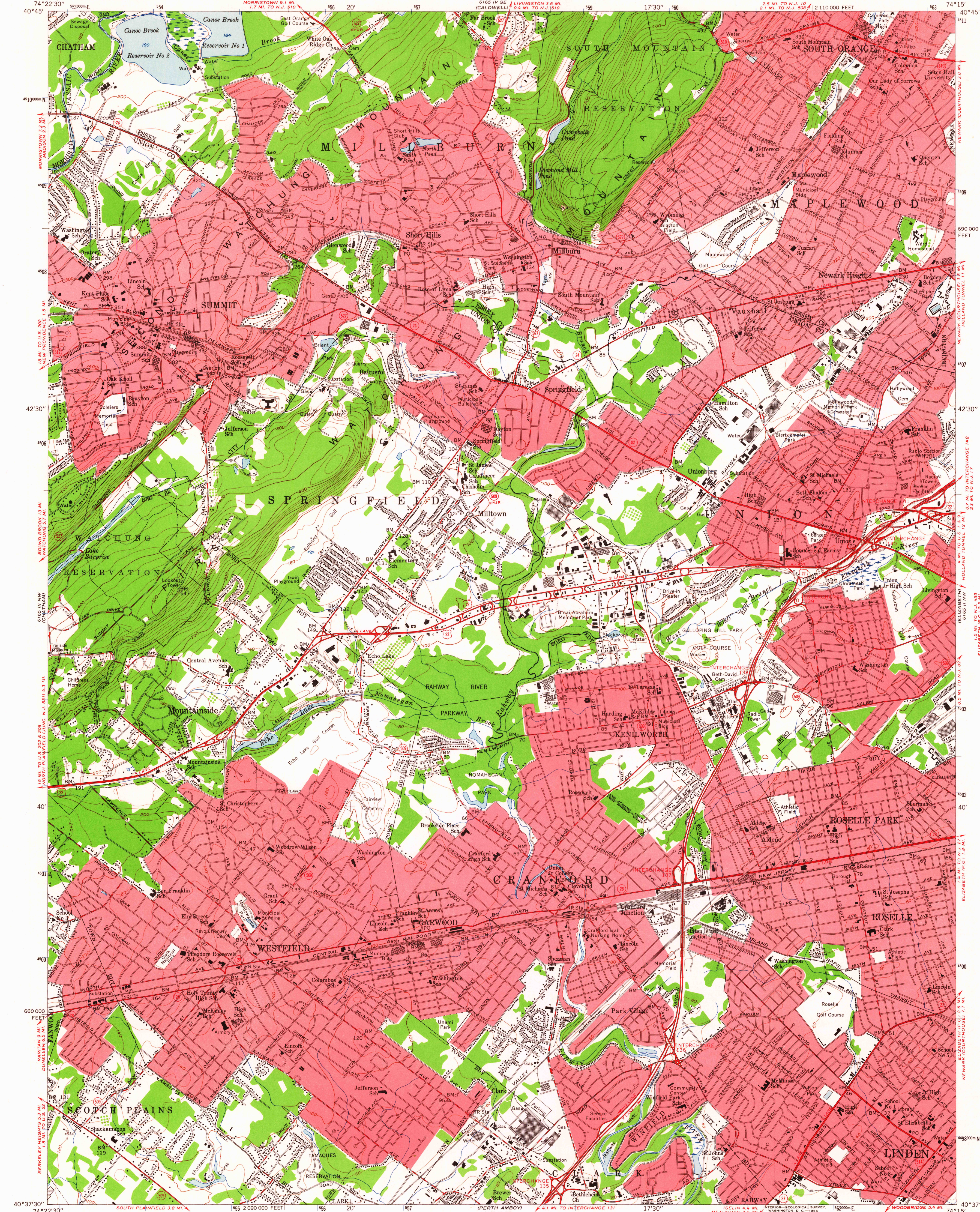


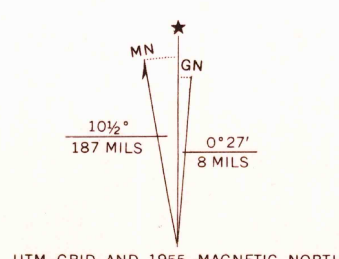
UNITED STATES  
DEPARTMENT OF THE INTERIOR  
GEOLOGICAL SURVEY

UNITED STATES  
DEPARTMENT OF THE ARMY  
CORPS OF ENGINEERS

ROSELLE QUADRANGLE  
NEW JERSEY  
7.5 MINUTE SERIES (TOPOGRAPHIC)



Map by the Army Map Service  
Edited and published by the Geological Survey  
Control by USC&GS, USCE, and New Jersey Geodetic Survey  
Topography from aerial photographs by photogrammetric methods  
Aerial photographs taken 1942-1943. Field check 1943  
Culture revised by the Geological Survey 1955  
Polyconic projection. 1927 North American datum  
10,000-foot grid based on New Jersey coordinate system  
1,000-meter Universal Transverse Mercator grid ticks,  
zone 18, shown in blue  
Red tint indicates areas in which only  
landmark buildings are shown



SCALE 1:24,000  
1000 0 1000 2000 3000 4000 5000 6000 7000 FEET  
1 5 0 1 KILOMETER  
CONTOUR INTERVAL 20 FEET  
DATUM IS MEAN SEA LEVEL

ROAD CLASSIFICATION  
Heavy-duty ——— Light-duty ———  
Medium-duty ——— Unimproved dirt ———  
U.S. Route ——— State Route ———



ROSELLE, N. J.  
N4037.5-W7415.7/5  
1955

USGS  
Historical File  
Topographic Division  
7220

FOR SALE BY U. S. GEOLOGICAL SURVEY, WASHINGTON 25, D. C.  
A FOLDER DESCRIBING TOPOGRAPHIC MAPS AND SYMBOLS IS AVAILABLE ON REQUEST

AMS 6165 III NE-SERIES V922

APR 20 1964