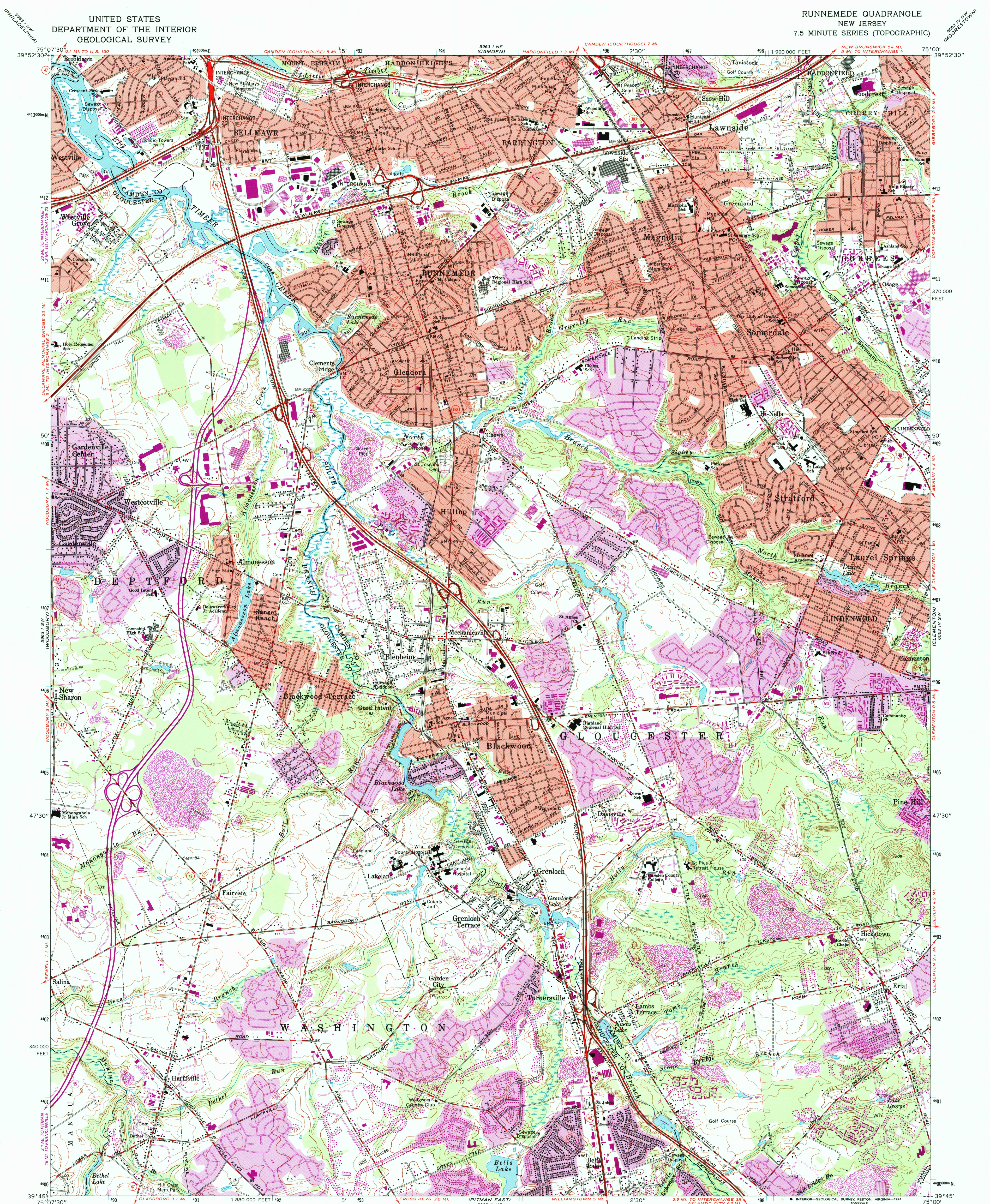
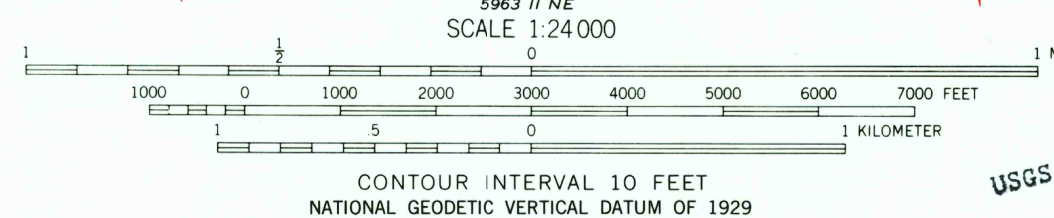
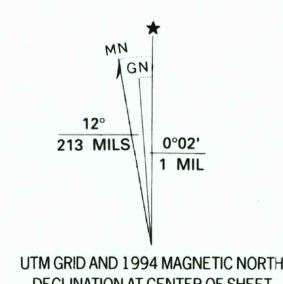


UNITED STATES  
DEPARTMENT OF THE INTERIOR  
GEOLOGICAL SURVEY

RUNNEMEDE QUADRANGLE  
NEW JERSEY  
7.5 MINUTE SERIES (TOPOGRAPHIC)



Produced by the United States Geological Survey  
Control by USGS, NOS/NOAA, and New Jersey Geodetic Survey  
Planimetry by photogrammetric methods from aerial photographs taken 1951. Topography by planimetric surveys 1952. Revised from aerial photographs taken 1965. Field checked 1967  
Projection and 10,000-foot grid ticks: New Jersey coordinate system, transverse Mercator  
1000-meter Universal Transverse Mercator grid ticks, zone 18, shown in blue  
1927 North American Datum (NAD 27)  
North American Datum of 1983 (NAD 83) is shown by dashed corner ticks  
The values of the shift between NAD 27 and NAD 83 for 7.5-minute intersections are given in USGS Bulletin 1875  
Red tint indicates areas in which only landmark buildings are shown  
Fine red dashed lines indicate selected fence and field lines where generally visible on aerial photographs. This information is unchecked



THIS MAP COMPLIES WITH NATIONAL MAP ACCURACY STANDARDS  
FOR SALE BY U.S. GEOLOGICAL SURVEY  
DENVER, COLORADO 80225, OR RESTON, VIRGINIA 22092  
A FOLDER DESCRIBING TOPOGRAPHIC MAPS AND SYMBOLS IS AVAILABLE ON REQUEST

RETURN TO:  
USGS AND HISTORICAL MAP ARCHIVES  
NEW JERSEY

ROAD CLASSIFICATION  
Primary highway, hard surface  
Secondary highway, hard surface  
Light-duty road, hard or improved surface  
Unimproved road  
Interstate Route  
U.S. Route  
State Route

QUADRANGLE LOCATION  
Revisions shown in purple compiled from aerial photographs taken 1990 and other sources. This information not field checked. Map edited 1994  
Information shown in purple may not meet USGS content standards and may conflict with previously mapped contours  
Purple tint indicates extension of urban areas

RUNNEMEDE, N.J.  
39075-G1-TF-024  
1967  
REVISED 1994  
DMA 5963 1 SE-SERIES V822