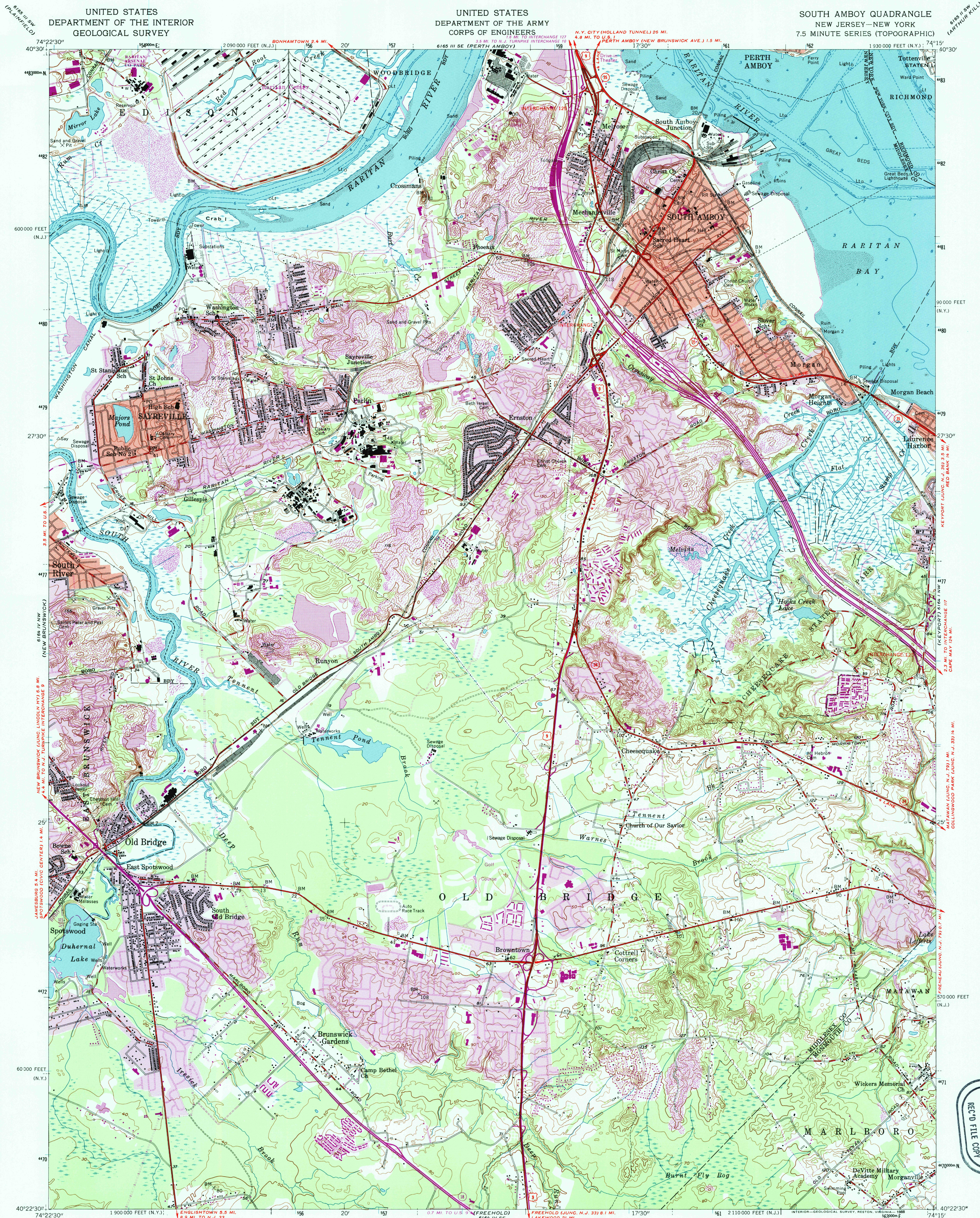


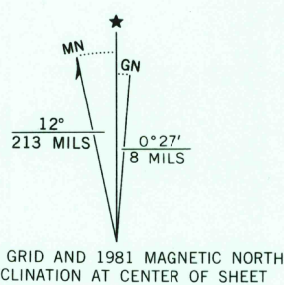
UNITED STATES
DEPARTMENT OF THE INTERIOR
GEOLOGICAL SURVEY

UNITED STATES
DEPARTMENT OF THE ARMY
CORPS OF ENGINEERS

SOUTH AMBOY QUADRANGLE
NEW JERSEY—NEW YORK
7.5 MINUTE SERIES (TOPOGRAPHIC)



Mapped by the Geological Survey and U. S. Corps of Engineers
Edited and published by the Geological Survey
Control by USGS, NOS/NOAA, USCE, and New Jersey Geodetic Survey
Culture compiled by planetable surveys by USGS and USCE
1933-34. Topography by planetable surveys by USGS 1938-39
Revised by USGS 1954
Selected hydrographic data compiled from NOS charts 286 (1954), and 375 (1953)
This information is not intended for navigational purposes
Polyconic projection. 10,000-foot grid ticks based on New Jersey coordinate system,
and New York coordinate system. Long Island zone. 1000-meter Universal
Transverse Mercator grid ticks, zone 18, shown in blue. 1927 North American
Datum. To place on the predicted North American Datum 1983 move the
projection lines 6 meters south and 34 meters west as shown by dashed corner
ticks
Red tint indicates areas in which only landmark buildings are shown
There may be private inholdings within the boundaries of
the National or State reservations shown on this map



SCALE 1:24,000
1 000 0 1000 2000 3000 4000 5000 6000 7000 FEET
1 0 5 0 1 KILOMETER
CONTOUR INTERVAL 10 FEET
NATIONAL GEODETIC VERTICAL DATUM OF 1929
DEPTH CURVES AND SOUNDINGS IN FEET—DATUM IS MEAN LOW WATER
THE RELATIONSHIP BETWEEN THE TWO DATUMS IS VARIABLE
SHORELINE SHOWN REPRESENTS THE APPROXIMATE LINE OF MEAN HIGH WATER
THE MEAN RANGE OF TIDE IS APPROXIMATELY 5.3 FEET
FOR SALE BY U. S. GEOLOGICAL SURVEY
DENVER, COLORADO 80225, OR RESTON, VIRGINIA 22092
A FOLDER DESCRIBING TOPOGRAPHIC MAPS AND SYMBOLS IS AVAILABLE ON REQUEST



ROAD CLASSIFICATION
Heavy-duty ——— Light-duty ———
Medium-duty ——— Unimproved dirt ———
U. S. Route ——— State Route ———

SOUTH AMBOY, N. J.—N. Y.
40074-D3-T024

1954
PHOTOREVISED 1981
DMA 6164 IV NE—SERIES V822

Revisions shown in purple compiled by the Geological Survey
from aerial photographs taken 1976 and other sources
This information not field checked. Map edited 1981
Purple tint indicates extension of urban areas

