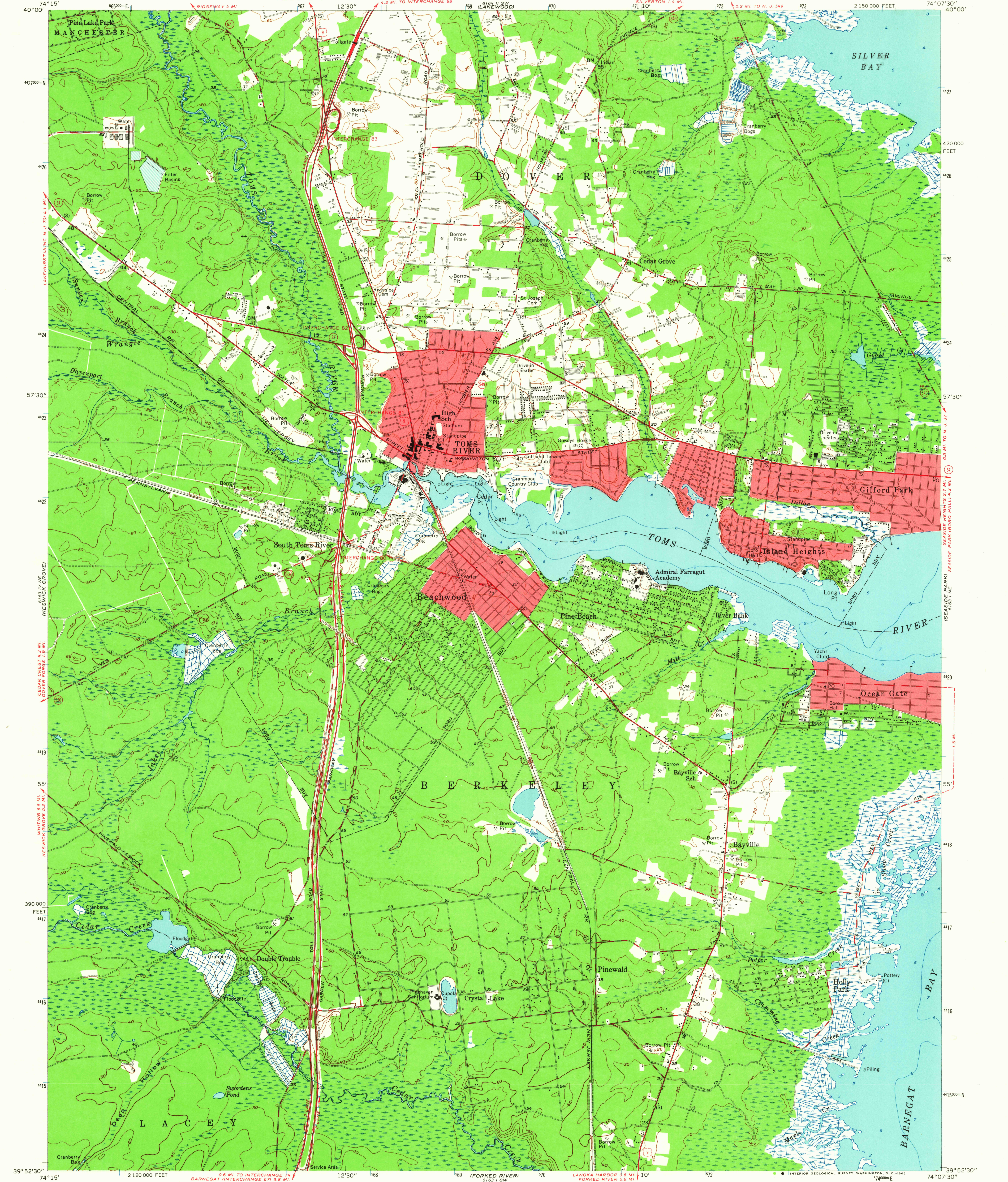


UNITED STATES  
DEPARTMENT OF THE INTERIOR  
GEOLOGICAL SURVEY

UNITED STATES  
DEPARTMENT OF COMMERCE  
COAST AND GEODETIC SURVEY

TOMS RIVER QUADRANGLE  
NEW JERSEY—OCEAN CO.  
7.5 MINUTE SERIES (TOPOGRAPHIC)  
NW/4 TOMS RIVER 15' QUADRANGLE

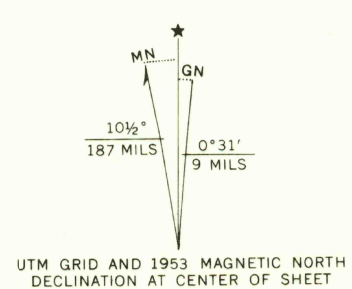


Maped by U. S. Coast and Geodetic Survey  
Edited and published by the Geological Survey  
Control by USC&GS(C), USCE(E), and New Jersey  
Geodetic Survey(S)

Culture and drainage in part compiled from aerial  
photographs taken 1952. Topography by Kelsh plotter  
and by planetable surveys 1951. Field check 1953  
Hydrography compiled from USC&GS chart 825 (1954)

Polyconic projection. 1927 North American datum  
10,000-foot grid based on New Jersey coordinate system  
1000-meter Universal Transverse Mercator grid ticks,  
zone 18, shown in blue

Red tint indicates areas in which only  
landmark buildings are shown  
Unchecked elevations are shown in brown  
Ocean Gate borough boundary  
in Toms River is low water line



SCALE 1:24,000  
1 0 1000 2000 3000 4000 5000 6000 7000 FEET  
1 0 5 10 KILOMETER

CONTOUR INTERVAL 10 FEET  
DATUM IS MEAN SEA LEVEL  
DEPTH CURVES AND SOUNDINGS IN FEET—DATUM IS MEAN LOW WATER  
SHORELINE SHOWN REPRESENTS THE APPROXIMATE LINE OF MEAN HIGH WATER  
THE MEAN RANGE OF TIDE IS APPROXIMATELY 0.6 FEET

THIS MAP COMPLIES WITH NATIONAL MAP ACCURACY STANDARDS  
FOR SALE BY U. S. GEOLOGICAL SURVEY, WASHINGTON 25, D. C.  
A FOLDER DESCRIBING TOPOGRAPHIC MAPS AND SYMBOLS IS AVAILABLE ON REQUEST



ROAD CLASSIFICATION  
Heavy-duty ——— Light-duty ———  
Medium-duty ——— Unimproved dirt ———  
U. S. Route ——— State Route ———

TOMS RIVER, N. J.  
NW/4 TOMS RIVER 15' QUADRANGLE  
N3952.5—W7407.5/7.5

1953  
AMS 6163 1 NW—SERIES V822

U.S.G.S.  
FILE COPY  
TOPOGRAPHIC DIVISION

U.S.G.S.  
Historical File  
Topographic Division

MAR 17 1965  
5070