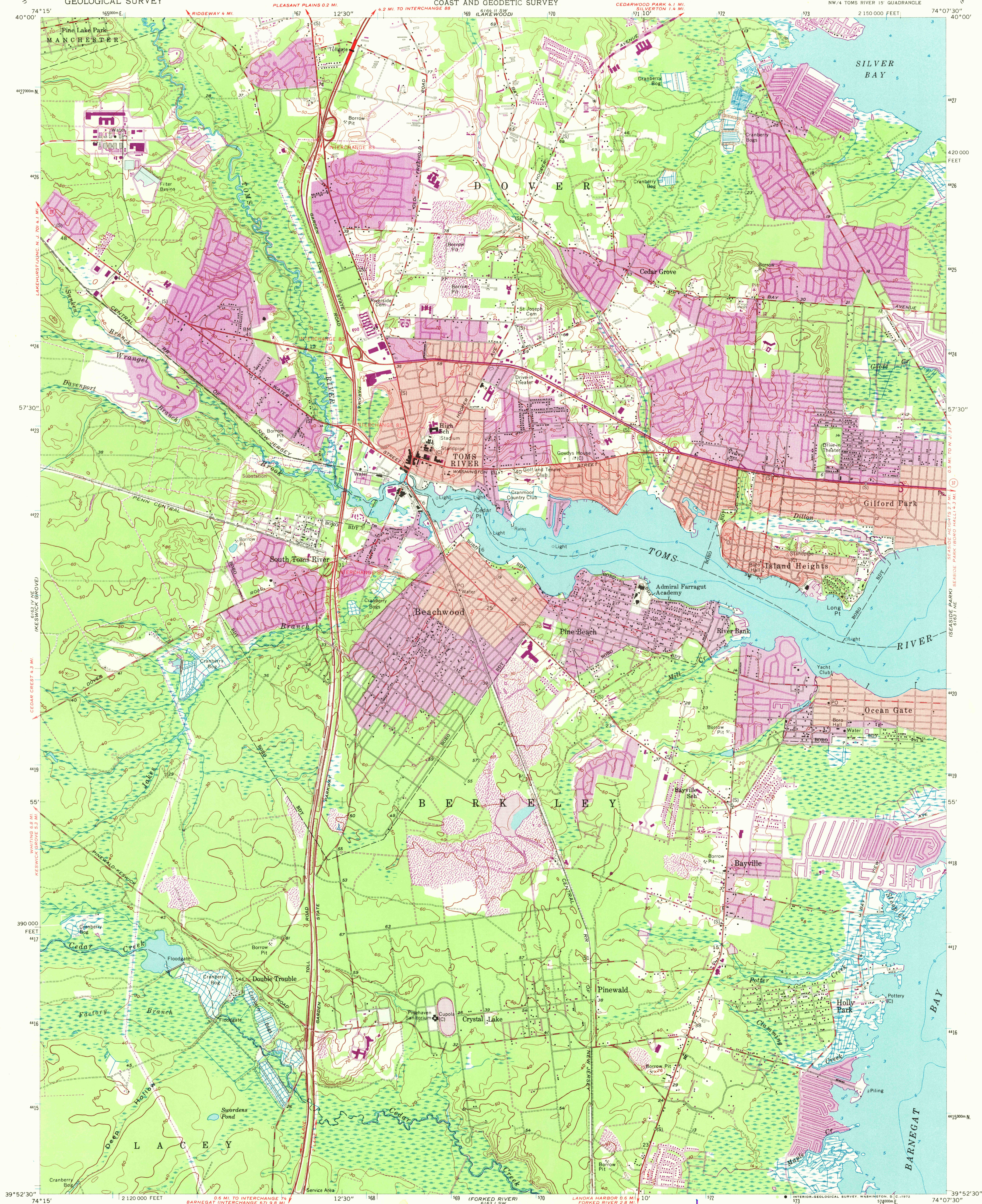


See also
(LAKEHURST)

See also
(POINT PLEASANT)



Mapped by U. S. Coast and Geodetic Survey
Edited and published by the Geological Survey
Control by USC&GS(C), USCE(E), and New Jersey
Geodetic Survey(S)
Culture and drainage in part compiled from aerial
photographs taken 1952. Topography by Kelsh plotter
and by planetable surveys 1951. Field check 1953
Hydrography compiled from USC&GS chart 825 (1954)
Polyconic projection. 1927 North American datum
100,000-foot grid based on New Jersey coordinate system
1000-meter Universal Transverse Mercator grid ticks,
zone 18, shown in blue
Red tint indicates areas in which only
landmark buildings are shown
Unchecked elevations are shown in brown
Ocean Gate borough boundary
in Toms River is low water line

Revisions shown in purple compiled by the Geological
Survey from aerial photographs taken 1970. This
information not field checked
Purple tint indicates extension of urban areas

THIS MAP COMPLIES WITH NATIONAL MAP ACCURACY STANDARDS
FOR SALE BY U. S. GEOLOGICAL SURVEY, WASHINGTON, D. C. 20242
A FOLDER DESCRIBING TOPOGRAPHIC MAPS AND SYMBOLS IS AVAILABLE ON REQUEST

ROAD CLASSIFICATION
Heavy-duty ——— Light duty ———
Medium-duty ——— Unimproved dirt ———
U. S. Route ——— State Route ———

TOMS RIVER, N. J.
NW/4 TOMS RIVER 15' QUADRANGLE
N3952.5—W7407.5/7.5

1953
PHOTOREVISED 1970
AMS 6163 1 NW—SERIES V822

FEB 1 1972

USGS
HISTORICAL FILE
TOPOGRAPHIC DIVISION