

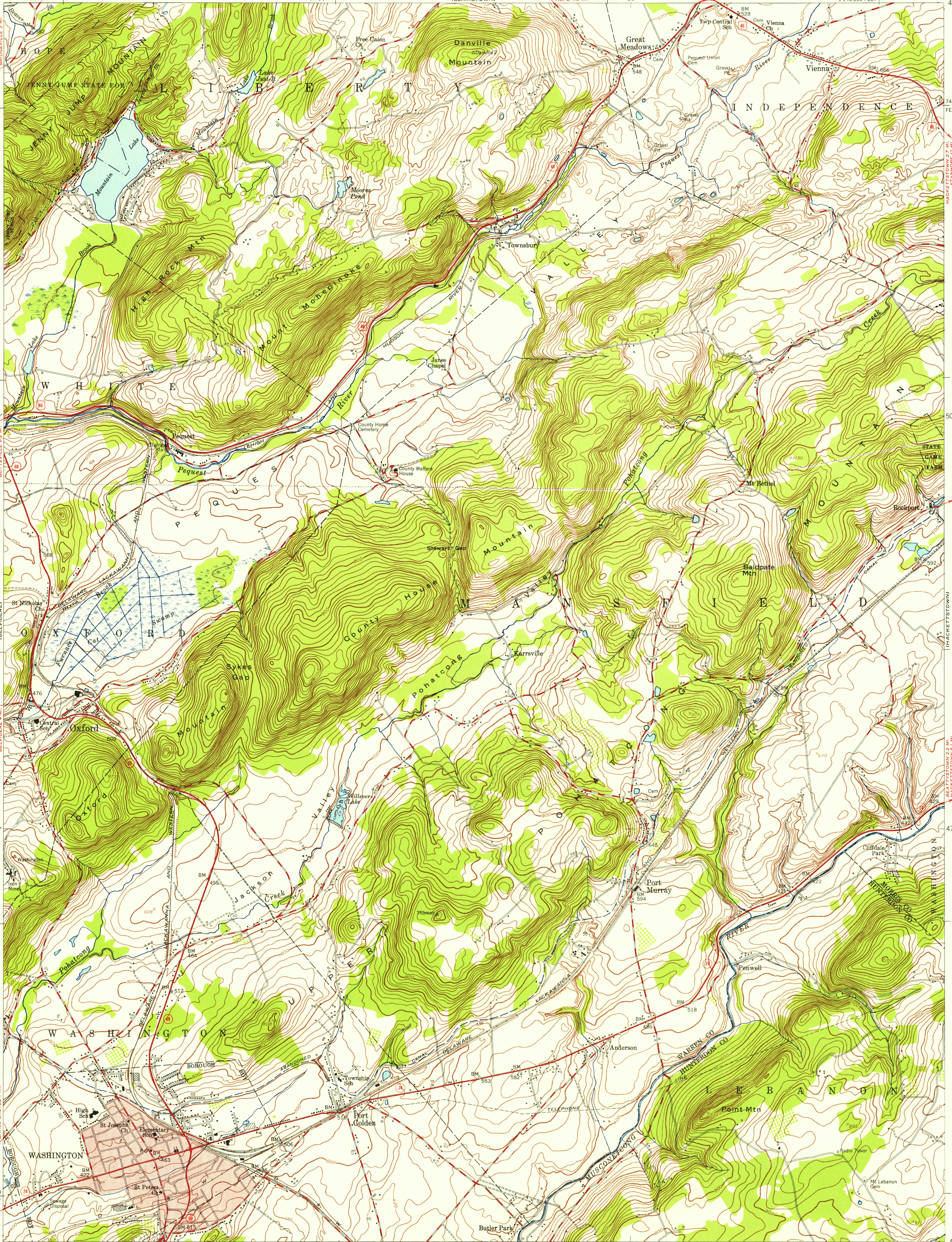
U.S.G.S.
FILE COPY
TOPOGRAPHIC DIVISION

U.S.G.S.
FILE COPY
TOPOGRAPHIC DIVISION

U.S.G.S.
FILE COPY
TOPOGRAPHIC DIVISION

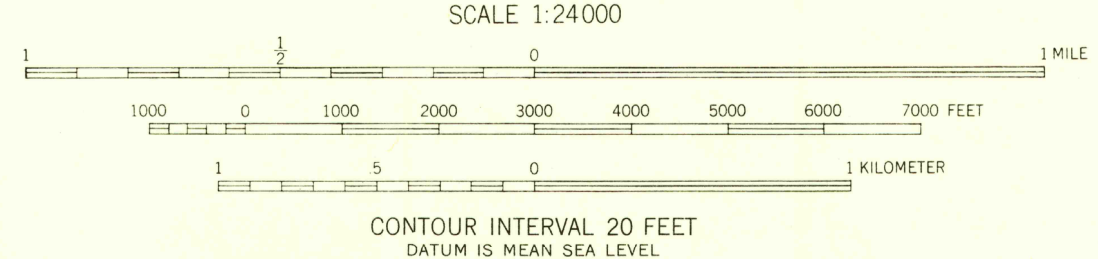
DEC 1 1955

3710



Maped by the Army Map Service
Edited and published by the Geological Survey
Control by USC&GS and New Jersey Geodetic Survey
Topography from aerial photographs by stereophotogrammetric
methods. Aerial photographs taken 1942. Field check 1943
Culture revised by the Geological Survey 1954
Polyconic projection. 1927 North American datum
10,000-foot grid based on New Jersey coordinate system
Red tint indicates area in which only
landmark buildings are shown
Unchecked elevations are shown in brown

APPROXIMATE MEAN
DECLINATION, 1954



ROAD CLASSIFICATION
Heavy-duty ——— Light-duty ———
Medium-duty ——— Unimproved dirt ———
U. S. Route ——— State Route ———

WASHINGTON, N. J.
N4045-W7452.5/7.5

1954

THIS MAP COMPLIES WITH NATIONAL MAP ACCURACY STANDARDS
FOR SALE BY U. S. GEOLOGICAL SURVEY, WASHINGTON 25, D. C.
A FOLDER DESCRIBING TOPOGRAPHIC MAPS AND SYMBOLS IS AVAILABLE ON REQUEST