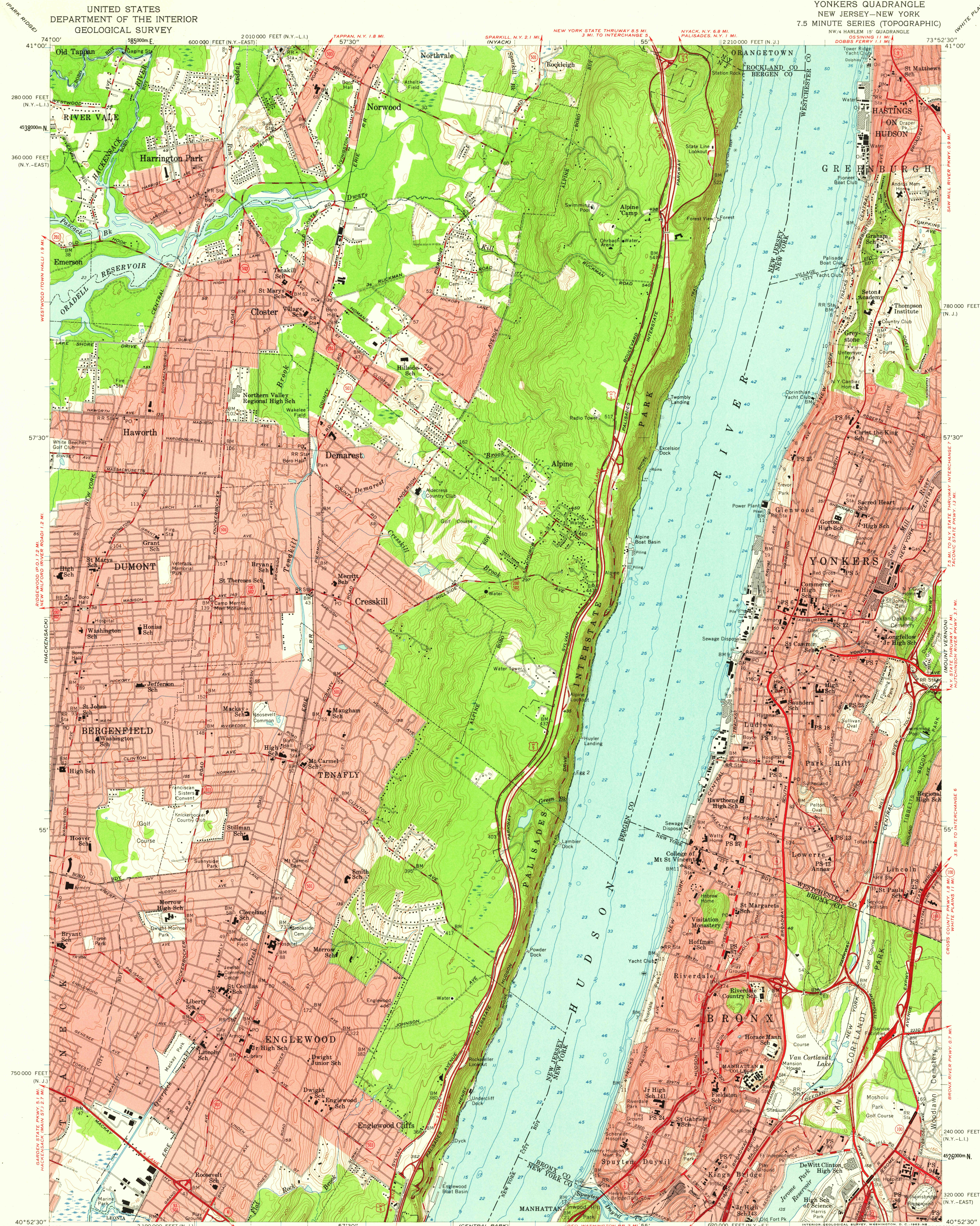


UNITED STATES
DEPARTMENT OF THE INTERIOR
GEOLOGICAL SURVEY

YONKERS QUADRANGLE
NEW JERSEY-NEW YORK
7.5 MINUTE SERIES (TOPOGRAPHIC)



Mapped, edited, and published by the Geological Survey
Control by USGS, USC&GS, USCE, New Jersey Geodetic Survey,
and City of New York Board of Estimate and Apportionment
Topography from aerial photographs by photogrammetric methods
Aerial photographs taken 1954. Field check 1956
Hydrography compiled from USC&GS charts 747 (1956), and
748 (1955)
Polyconic projection. 1927 North American datum
10,000-foot grids based on New Jersey coordinate system, and
New York coordinate system, East and Long Island zones
1000-meter Universal Transverse Mercator grid ticks,
zone 18, shown in blue
Red tint indicates areas in which only
landmark buildings are shown

TRUE NORTH
MAGNETIC NORTH
APPROXIMATE MEAN
DECLINATION, 1956

SCALE 1:24000
1 0 1000 2000 3000 4000 5000 6000 7000 FEET
1 5 0 1 KILOMETER
CONTOUR INTERVAL 10 FEET
DATUM IS MEAN SEA LEVEL
DEPTH CURVES AND SOUNDINGS IN FEET-DATUM IS MEAN LOW WATER
SHORELINE SHOWN REPRESENTS THE APPROXIMATE LINE OF MEAN HIGH WATER
THE MEAN RANGE OF TIDE IS APPROXIMATELY 3.7 FEET

THIS MAP COMPLIES WITH NATIONAL MAP ACCURACY STANDARDS
FOR SALE BY U. S. GEOLOGICAL SURVEY, WASHINGTON 25, D. C.
A FOLDER DESCRIBING TOPOGRAPHIC MAPS AND SYMBOLS IS AVAILABLE ON REQUEST

USGS
Historical File
Topographic Division



QUADRANGLE LOCATION

ROAD CLASSIFICATION
Heavy-duty ——— Light-duty ———
Medium-duty ——— Unimproved dirt ———
U. S. Route ——— State Route ———

USGS YONKERS, N. J.-N. Y.
NW/4 HARLEM 15' QUADRANGLE
N4052.5-W7352.5/7.5
1956

MAR 19 1953

6060