

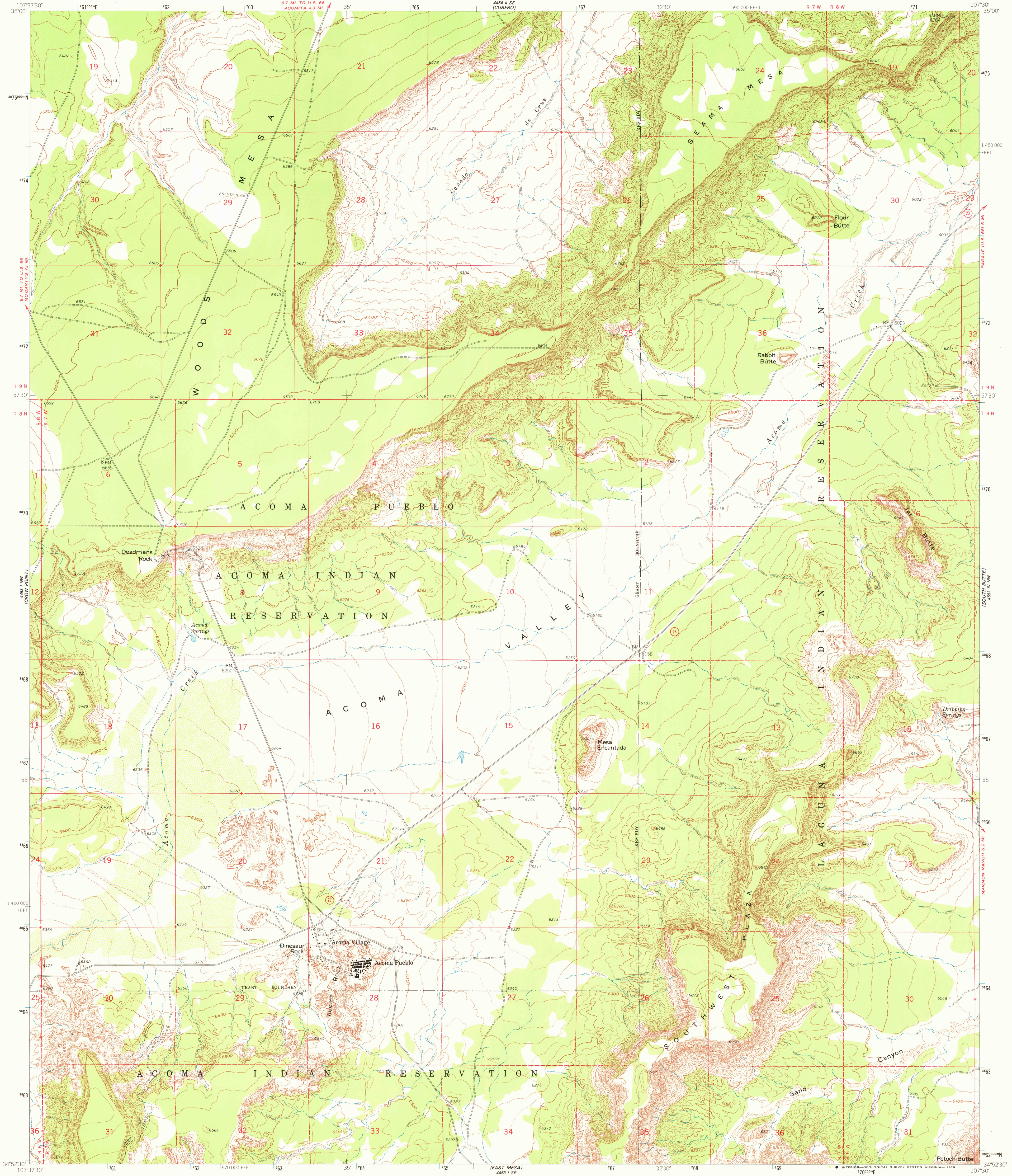
64° 15' N
107° 37' 30" W
(NAD 83)

UNITED STATES
DEPARTMENT OF THE INTERIOR
GEOLOGICAL SURVEY



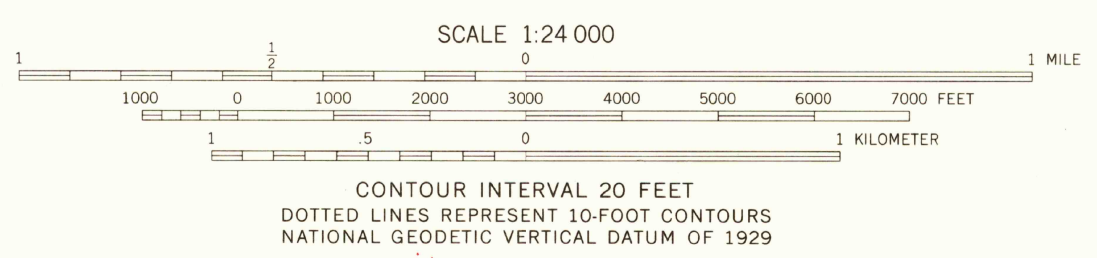
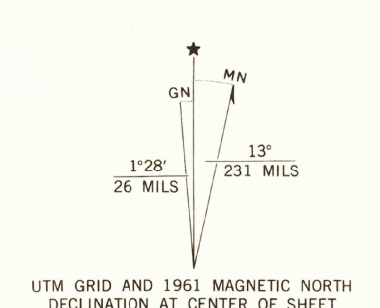
ACOMA PUEBLO QUADRANGLE
NEW MEXICO-VALENCIA CO.
7.5 MINUTE SERIES (TOPOGRAPHIC)

64° 15' N
107° 37' 30" W
(NAD 83)



(BLUE MESA)
4453 1 SW

Mapped, edited, and published by the Geological Survey
Control by USGS and USC&GS
Topography by photogrammetric methods from aerial
photographs taken 1956. Field checked 1961
Polyconic projection. 1927 North American datum
10,000-foot grid based on New Mexico coordinate system, west zone
1000 meter Universal Transverse Mercator grid ticks,
zone 13, shown in blue
Fine red dashed lines indicate selected fence and field lines where
generally visible on aerial photographs. This information is unchecked
Where omitted, land lines have not been established
Map photoinspected 1974
No major culture or drainage changes observed



USGS
Historical File
Topographic Division

ACOMA PUEBLO, N. MEX.
N3452.5-W10730/7.5
1961
PHOTOINSPECTED 1974
AMS 4453 1 NE-SERIES V881

MAR 19 1978

1300