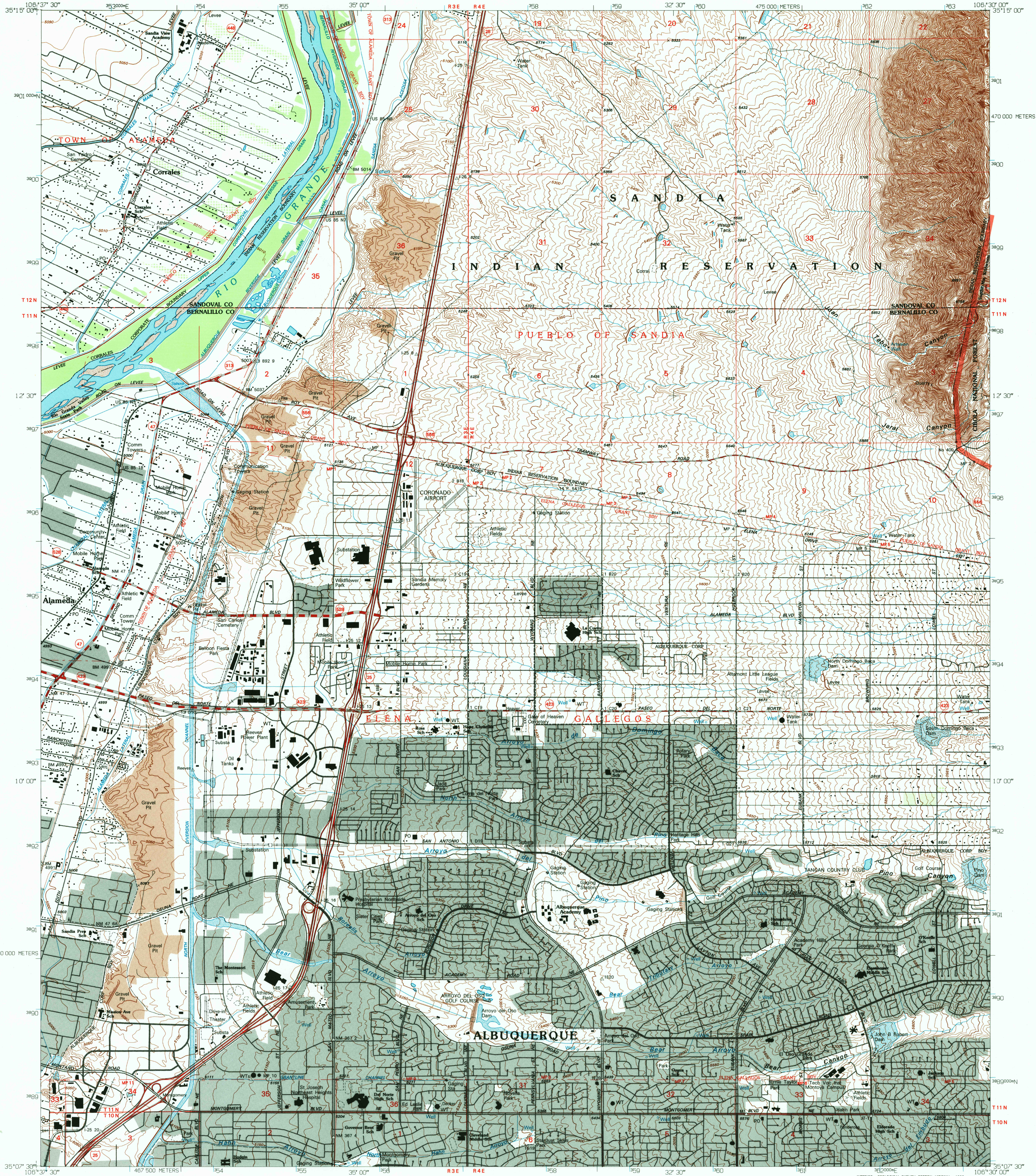
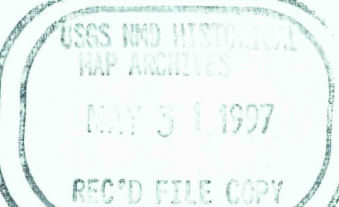
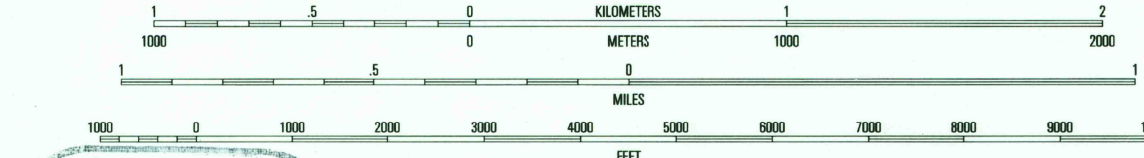
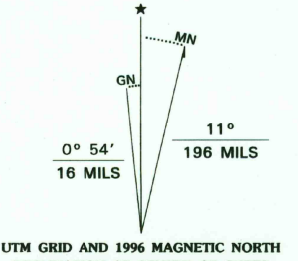


UNITED STATES
DEPARTMENT OF THE INTERIOR
GEOLOGICAL SURVEY

ALAMEDA QUADRANGLE
NEW MEXICO
7.5-MINUTE SERIES (TOPOGRAPHIC)



Produced by the United States Geological Survey
Compiled from imagery dated 1959. Revised from imagery dated 1990. PLSS and survey control current as of 1992. Contours and elevations current as of 1959. Map edited 1996.
North American Datum of 1983 (NAD 83). Projection and blue 1000-meter ticks: Universal Transverse Mercator, zone 13.
2500-meter ticks: New Mexico Coordinate System of 1983 (central zone).
North American Datum of 1927 (NAD 27) is shown by dashed corner ticks. The values of the shift between NAD 83 and NAD 27 for 7.5-minute intersections are obtainable from National Geodetic Survey NADCON software.
There may be private inholdings within the boundaries of the National or State Reservations shown on this map.



THIS MAP COMPLIES WITH NATIONAL MAP ACCURACY STANDARDS
FOR SALE BY U.S. GEOLOGICAL SURVEY
DENVER, COLORADO 80225, OR RESTON, VIRGINIA 22092
A FOLDER DESCRIBING TOPOGRAPHIC MAPS AND SYMBOLS IS AVAILABLE ON REQUEST



QUADRANGLE LOCATION

1	2	3
4	5	6
7	8	9

ROAD CLASSIFICATION
Primary highway
hard surface
Secondary highway
hard surface
Interstate Route
U.S. Route
State Route
Light-duty road, hard or
improved surface
Unimproved road

ADJOINING 7.5' QUADRANGLE NAMES
1. Luna Machete
2. Bernalillo
3. Placitas
4. Los Grillos
5. Sandia Crest
6. Albuquerque West
7. Albuquerque East
8. Tijeras

ALAMEDA, NM
35106-B5-TF-024
1990
DMA 4654 II NE-SERIES V81

