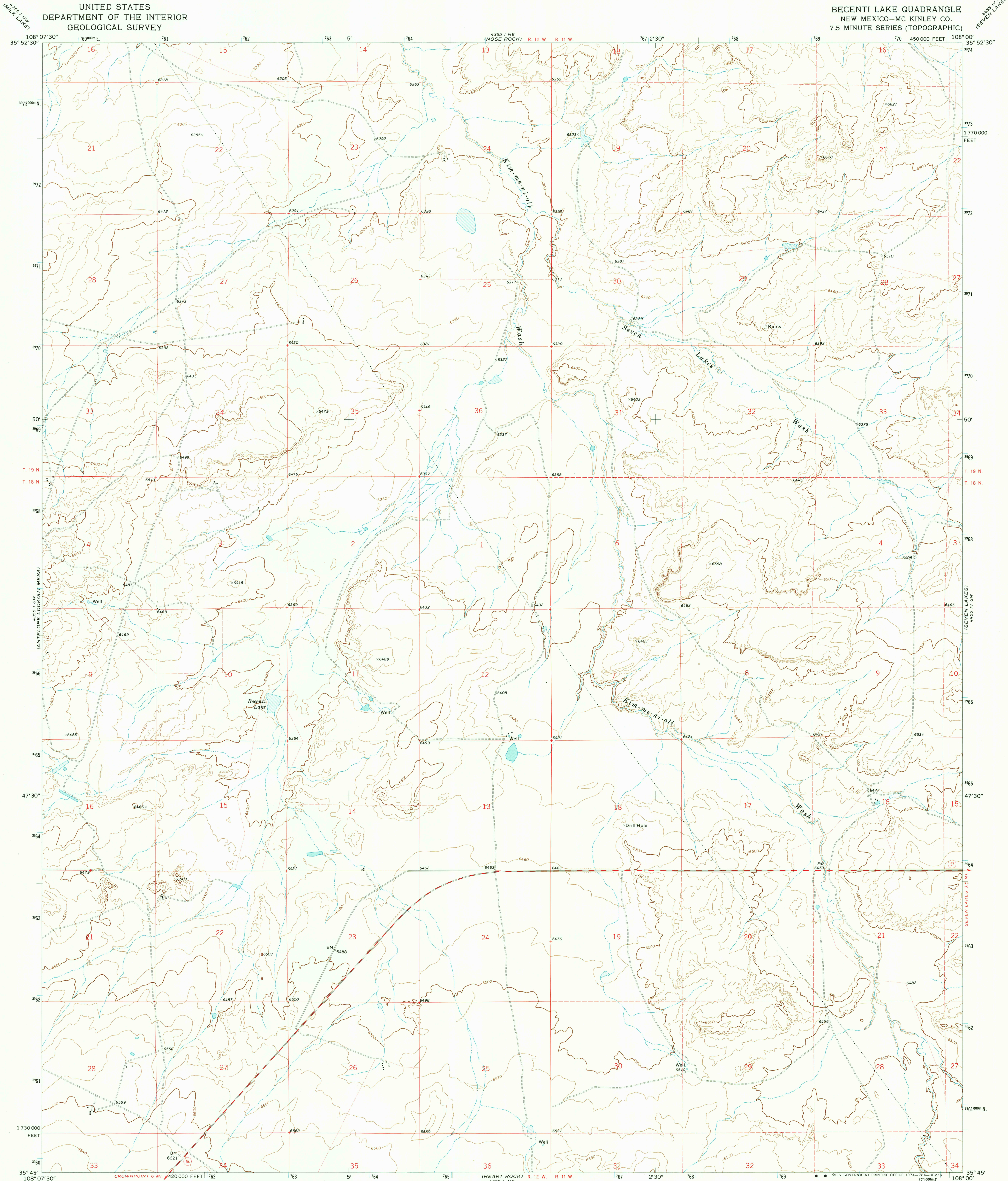
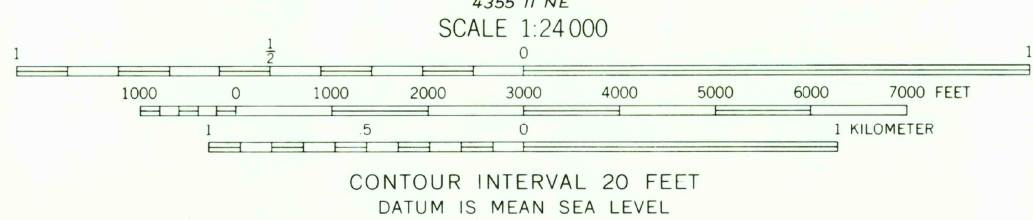
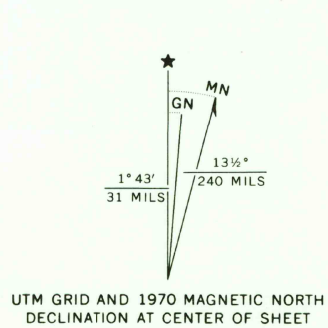


UNITED STATES  
DEPARTMENT OF THE INTERIOR  
GEOLOGICAL SURVEY

BECENTI LAKE QUADRANGLE  
NEW MEXICO—MC KINLEY CO.  
7.5 MINUTE SERIES (TOPOGRAPHIC)



Mapped, edited, and published by the Geological Survey  
Control by USGS and USC&GS  
Topography by photogrammetric methods from aerial  
photographs taken 1969. Field checked 1970  
Projection and 10,000-foot grid ticks: New Mexico  
coordinate system, west zone (transverse Mercator)  
1000-meter Universal Transverse Mercator grid ticks,  
zone 12, shown in blue. 1927 North American datum  
Fine red dashed lines indicate selected fence lines



ROAD CLASSIFICATION  
Primary highway, hard surface  
Secondary highway, hard surface  
Light-duty road, hard or improved surface  
Unimproved road  
Interstate Route  
U. S. Route  
State Route

THIS MAP COMPLIES WITH NATIONAL MAP ACCURACY STANDARDS  
FOR SALE BY U. S. GEOLOGICAL SURVEY, DENVER, COLORADO 80225, OR RESTON, VIRGINIA 22092  
A FOLDER DESCRIBING TOPOGRAPHIC MAPS AND SYMBOLS IS AVAILABLE ON REQUEST

BECENTI LAKE, N. MEX.  
N3545-W10800/7.5

1970

AMS 4355 I SE—SERIES V88 I

USGS  
HISTORICAL FILE  
TOPOGRAPHIC DIVISION

2550  
AUG 2 6 1974