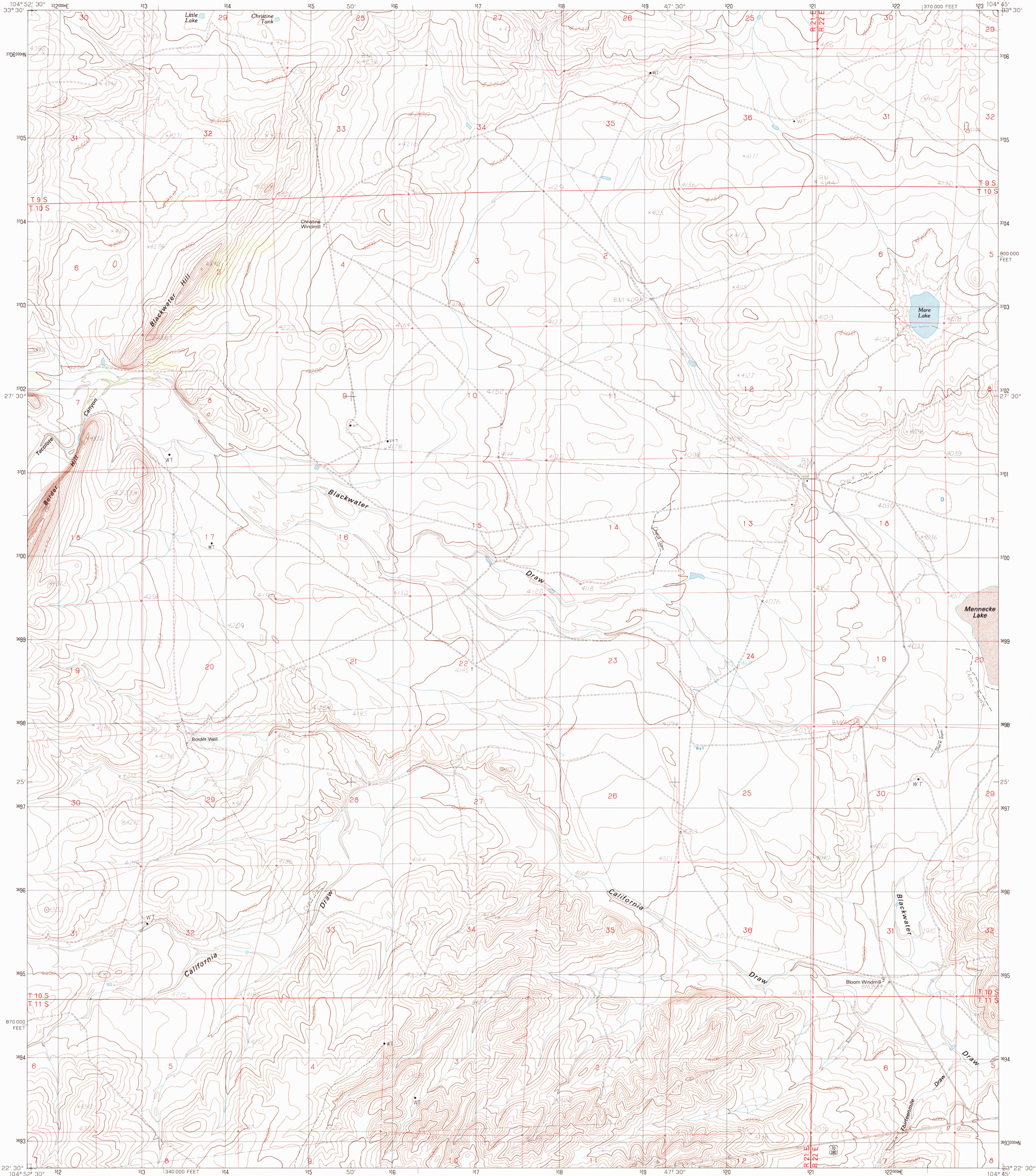


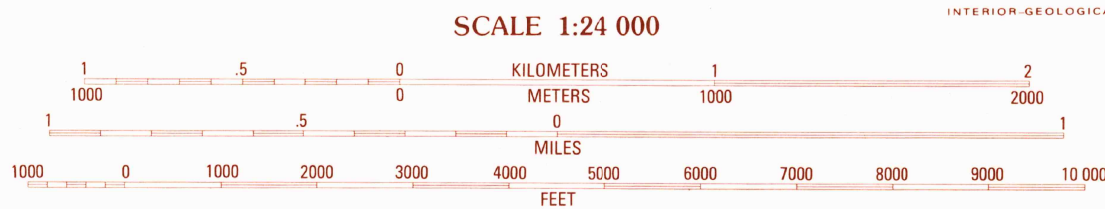
UNITED STATES  
DEPARTMENT OF THE INTERIOR  
GEOLOGICAL SURVEY

BLACKWATER HILL QUADRANGLE  
NEW MEXICO-CHAVES CO.  
7.5 MINUTE SERIES (TOPOGRAPHIC)



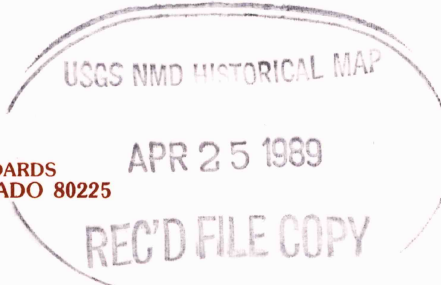
PRODUCED BY THE UNITED STATES GEOLOGICAL SURVEY  
CONTROL BY USGS NOS/NOAA  
COMPILED FROM AERIAL PHOTOGRAPHS TAKEN 1959  
FIELD CHECKED 1962  
LIMITED REVISION FROM AERIAL PHOTOGRAPHS TAKEN 1962  
FIELD CHECKED 1985 MAP EDITED 1988  
PROJECTION TRANSVERSE MERCATOR  
GRID: 1000-METER UNIVERSAL TRANSVERSE MERCATOR, ZONE 13  
10,000-FOOT STATE GRID TICS NEW MEXICO, EAST ZONE  
UTM GRID DECLINATION 006 EAST  
1988 MAGNETIC NORTH DECLINATION 10' EAST  
VERTICAL DATUM NATIONAL GEODETIC VERTICAL DATUM OF 1929  
HORIZONTAL DATUM 1927 NORTH AMERICAN DATUM  
To place on the predicted North American Datum of 1983,  
move the projection lines as shown by dashed corner ticks  
(6 meters south and 48 meters east)  
There may be private inholdings within the boundaries of any  
Federal and State Reservations shown on this map  
Public Land Survey System is shown as published in 1962 and  
verified or supplemented in 1985

**PROVISIONAL MAP**  
Produced from original  
manuscript drawings. Infor-  
mation shown as of date of  
field check.



CONTOUR INTERVAL 10 FEET

THIS MAP COMPLIES WITH NATIONAL MAP ACCURACY STANDARDS  
FOR SALE BY U.S. GEOLOGICAL SURVEY, DENVER, COLORADO 80225  
OR RESTON, VIRGINIA 22092



1	2	3	1
4	5	6	7
8	9	10	11
ADJOINING 7.5' QUADRANGLE NAMES			

**ROAD LEGEND**  
Improved Road .....  
Unimproved Road .....  
Trail .....  
Interstate Route U.S. Route State Route

**BLACKWATER HILL, NEW MEXICO**  
PROVISIONAL EDITION 1988

33104-D7-TF-024