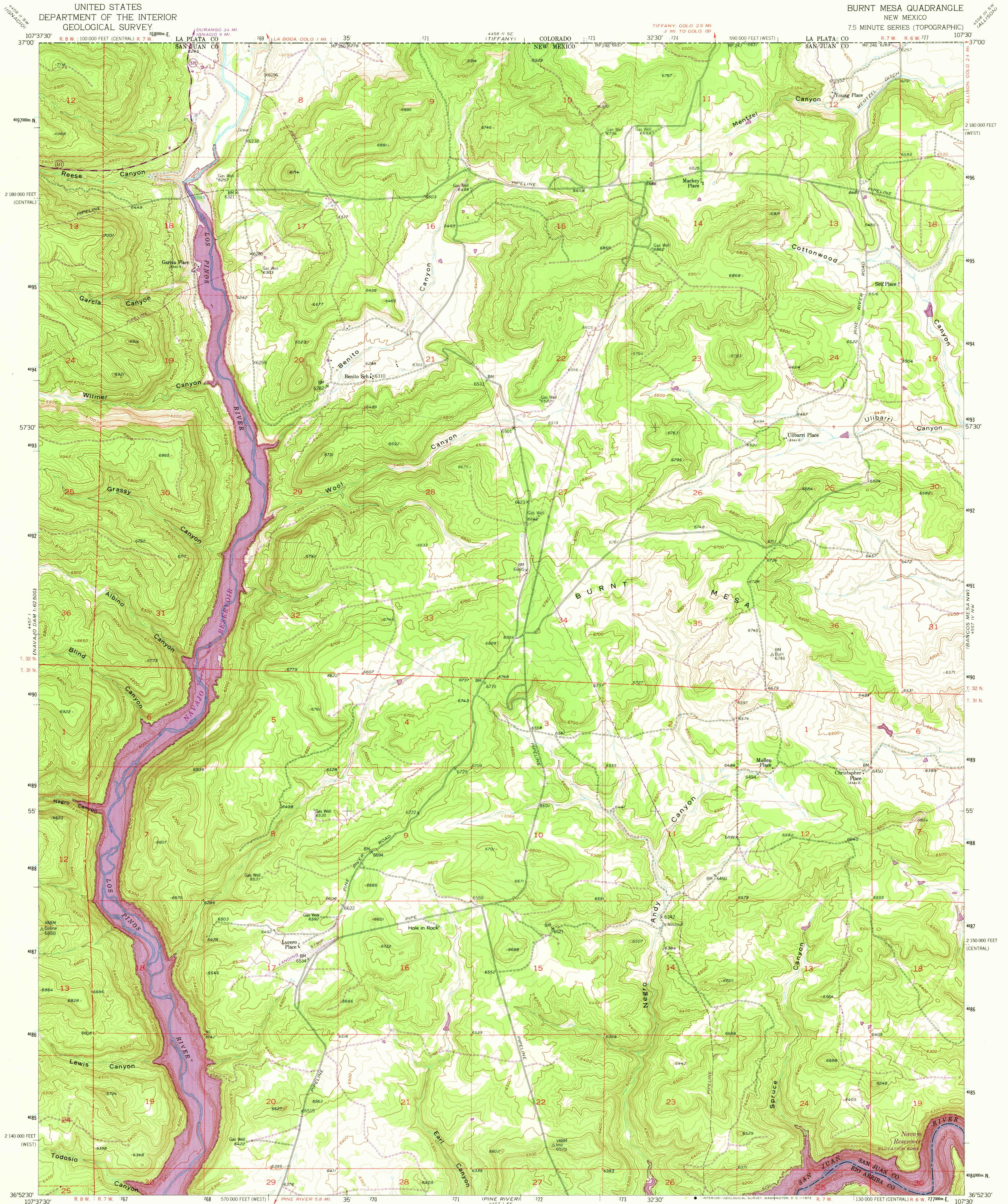


UNITED STATES
DEPARTMENT OF THE INTERIOR
GEOLOGICAL SURVEY

BURNT MESA QUADRANGLE
NEW MEXICO

7.5 MINUTE SERIES (TOPOGRAPHIC)



Mapped, edited, and published by the Geological Survey
Control by USGS and USC&GS

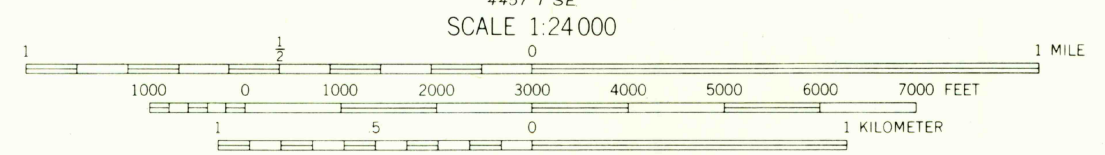
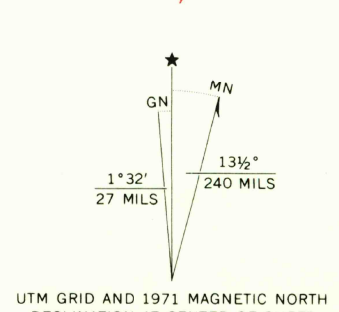
Topography by photogrammetric methods from
aerial photographs taken 1950. Field check 1954

Polyconic projection. 1927 North American datum
10,000-foot grid based on New Mexico coordinate system,
west and central zones

1000-meter Universal Transverse Mercator grid ticks,
zone 13, shown in blue

Revisions shown in purple compiled from aerial photographs
taken 1971. This information not field checked

Areas covered by dashed light-purple pattern are subject
to controlled inundation to 6101 feet



CONTOUR INTERVAL 20 FEET
DATUM IS MEAN SEA LEVEL



ROAD CLASSIFICATION
Light-duty ————— Unimproved dirt —————

HISTORICAL FILE
TOPOGRAPHIC DIVISION

BURNT MESA, N. MEX.
N3652.5-W10730/7.5

1954
PHOTOREVISED 1971
AMS 4457 I NE-SERIES V881

2710

MAR 9 1973