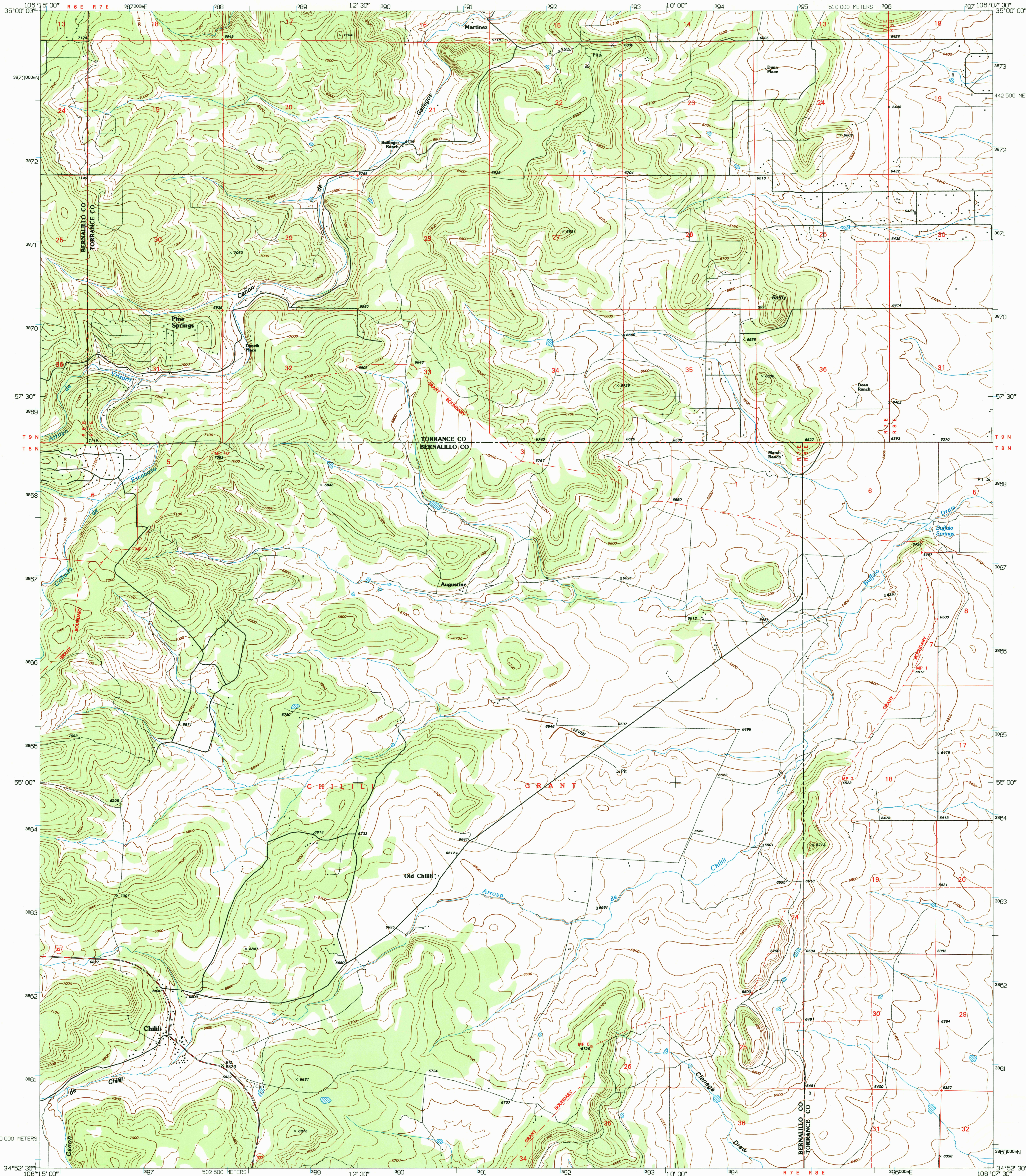
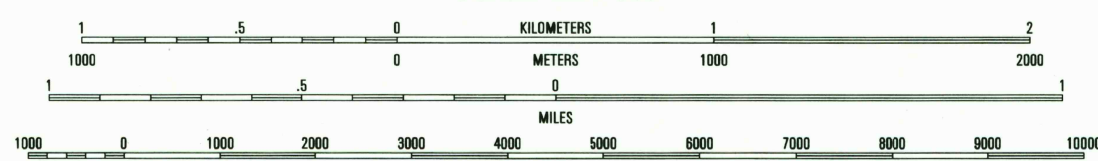
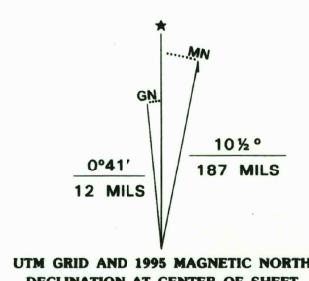


UNITED STATES
DEPARTMENT OF THE INTERIOR
GEOLOGICAL SURVEY

CHILLILI QUADRANGLE
NEW MEXICO
7.5-MINUTE SERIES (TOPOGRAPHIC)



Produced by the United States Geological Survey
Compiled from imagery dated 1952. Revised from imagery dated 1991. PLSS and survey control current as of 1954. Contours and elevations current as of 1952. Map edited 1995. North American Datum of 1983 (NAD 83). Projection and blue 1000-meter ticks: Universal Transverse Mercator, zone 13. 2500-meter ticks: New Mexico Coordinate System of 1983 central zone.
North American Datum of 1927 (NAD 27) is shown by dashed corner ticks. The values of the shift between NAD 83 and NAD 27 for 7.5-minute intersections are obtainable from National Geodetic Survey NADCON software.



CONTOUR INTERVAL 20 FEET
NATIONAL GEODETIC VERTICAL DATUM OF 1929

THIS MAP COMPLIES WITH NATIONAL MAP ACCURACY STANDARDS
FOR SALE BY U.S. GEOLOGICAL SURVEY
DENVER, COLORADO 80225, OR RESTON, VIRGINIA 22092
A FOLDER DESCRIBING TOPOGRAPHIC MAPS AND SYMBOLS IS AVAILABLE ON REQUEST

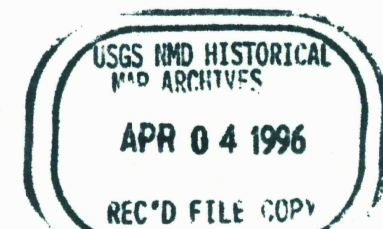


QUADRANGLE LOCATION

1	2	3	1 Sedillo
4	5	6	2 Edgewood
7	8	9	3 Moriarty North
		10	4 Eacabosa
		11	5 Moriarty South
		12	6 Toluque
		13	7 Milbourn Ranch
		14	8 Estancia

ADJOINING 7.5' QUADRANGLE NAMES

ROAD CLASSIFICATION	
Primary highway	Light-duty road, hard or improved surface
Secondary highway	Unimproved road
Interstate Route	U.S. Route
State Route	



CHILLILI, NM
34106-H2-TF-024
1991
DMA 4753 1 NW-SERIES V881

