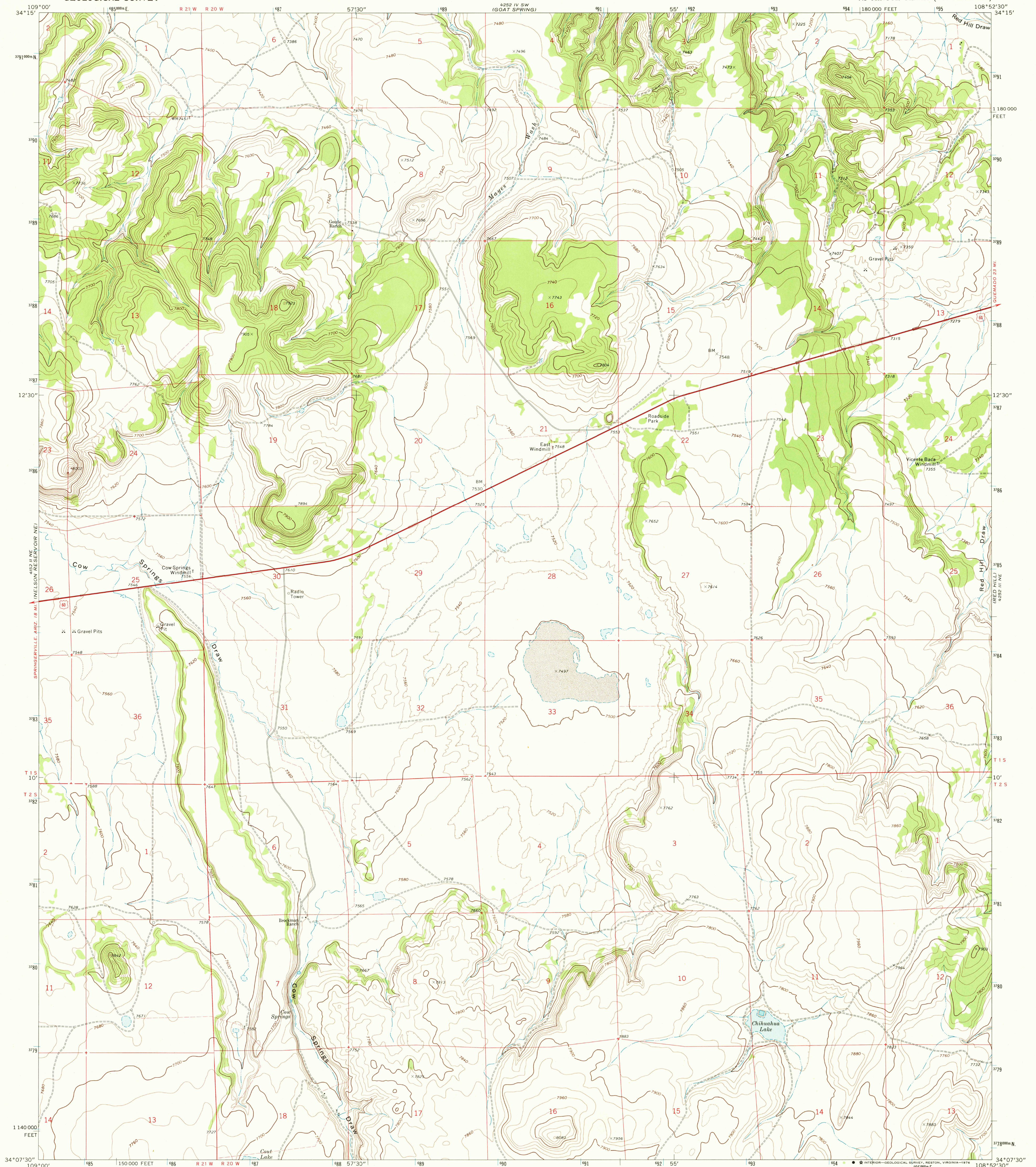


UNITED STATES
DEPARTMENT OF THE INTERIOR
GEOLOGICAL SURVEY

COW SPRINGS QUADRANGLE
NEW MEXICO—CATRON CO.
7.5 MINUTE SERIES (TOPOGRAPHIC)



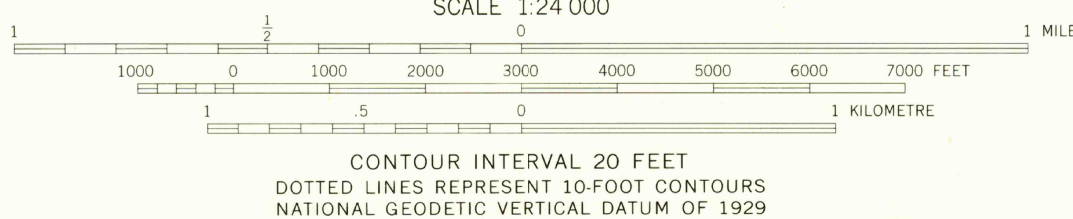
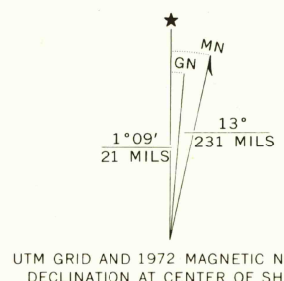
Mapped, edited, and published by the Geological Survey

Control by USGS and NOS/NOAA

Topography by photogrammetric methods from aerial photographs taken 1971. Field checked 1972

Projection and 10,000-foot grid ticks: New Mexico coordinate system, west zone (transverse Mercator) 1000-metre Universal Transverse Mercator grid ticks, zone 12, shown in blue. 1927 North American datum

Fine red dashed lines indicate selected fence lines



ROAD CLASSIFICATION	
Primary highway, hard surface	Light-duty road, hard or improved surface
Secondary highway, hard surface	Unimproved road
Interstate Route	U. S. Route
	State Route

THIS MAP COMPLIES WITH NATIONAL MAP ACCURACY STANDARDS
FOR SALE BY U.S. GEOLOGICAL SURVEY, DENVER, COLORADO 80225, OR RESTON, VIRGINIA 22092
A FOLDER DESCRIBING TOPOGRAPHIC MAPS AND SYMBOLS IS AVAILABLE ON REQUEST

COW SPRINGS, N. MEX.
N3407.5—W10852.5/7.5

USGS
Historical File
Topographic Division

1972
AMS 4252 III NW—SERIES V881

MAR 29 1976