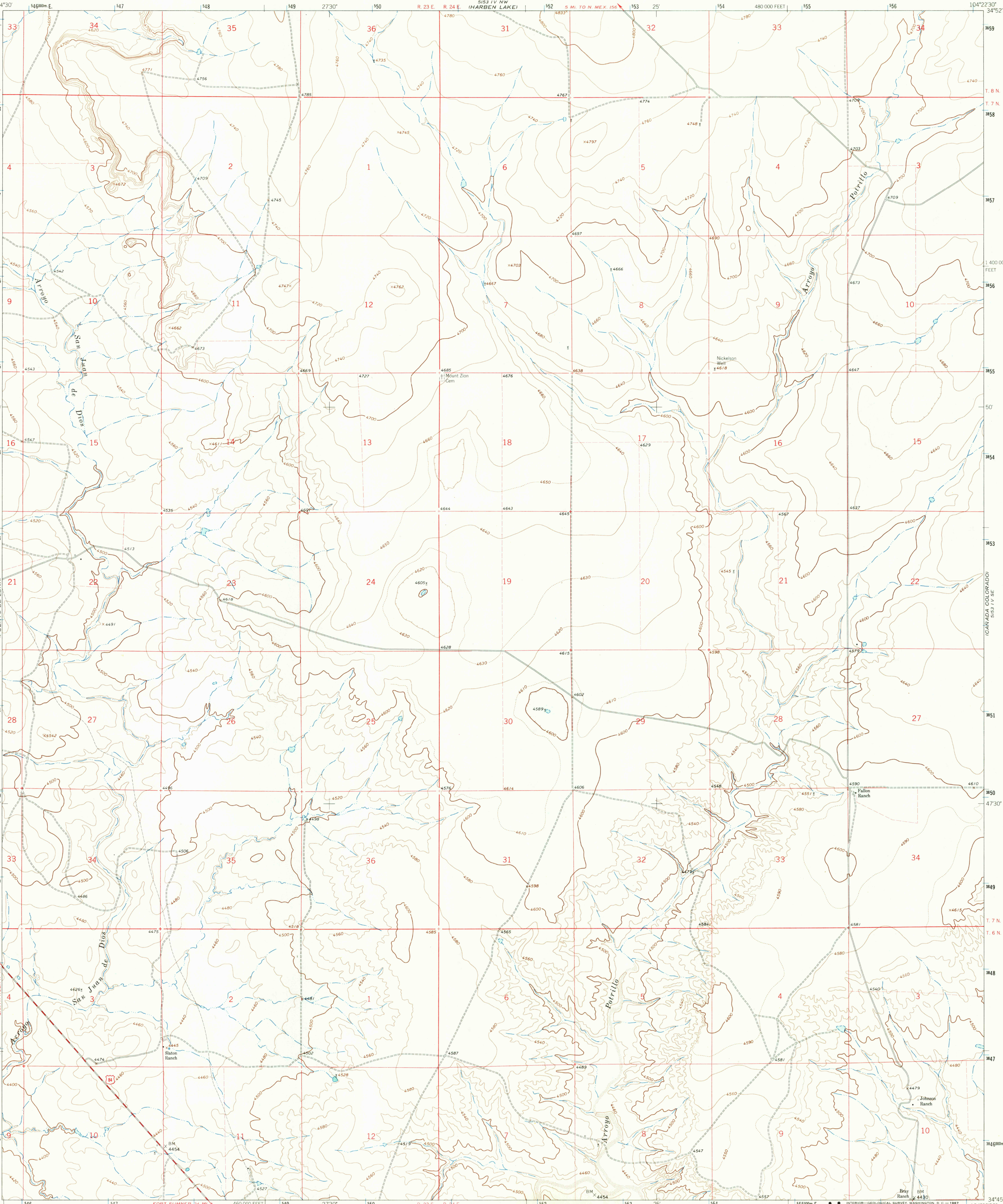


UNITED STATES  
DEPARTMENT OF THE INTERIOR  
GEOLOGICAL SURVEY

FALLON RANCH QUADRANGLE  
NEW MEXICO-GUADALUPE CO.  
7.5 MINUTE SERIES (TOPOGRAPHIC)

5153 IV NW  
(HARBEN LAKE)

5153 IV SE  
(SALT LAKE)



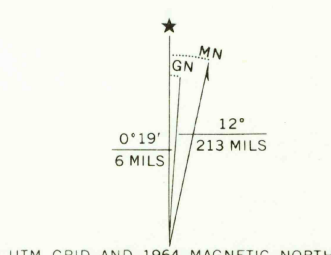
Mapped, edited, and published by the Geological Survey

Control by USGS and USC&GS

Topography by photogrammetric methods from aerial  
photographs taken 1963. Field checked 1964

Polyconic projection. 1927 North American datum  
10,000-foot grid based on New Mexico coordinate system, east zone  
1000-meter Universal Transverse Mercator grid ticks,  
zone 13, shown in blue

Fine red dashed lines indicate selected fence lines



CONTOUR INTERVAL 20 FEET  
DOTTED LINES REPRESENT 10-FOOT CONTOURS  
DATUM IS MEAN SEA LEVEL

THIS MAP COMPLIES WITH NATIONAL MAP ACCURACY STANDARDS  
FOR SALE BY U. S. GEOLOGICAL SURVEY, DENVER, COLORADO 80225, OR WASHINGTON, D. C. 20242  
A FOLDER DESCRIBING TOPOGRAPHIC MAPS AND SYMBOLS IS AVAILABLE ON REQUEST

USGS  
Historical File  
Topographic Division

ROAD CLASSIFICATION  
Medium-duty ——— Light-duty ———  
Unimproved dirt ———  
U.S. Route



U.S.G.S.  
FILE COPY  
TOPOGRAPHIC DIVISION

FALLON RANCH, N. MEX.  
N3445-W10422 5/7.5  
1964  
AMS 5153 IV SW-SERIES V881

2750  
APR 21 1967