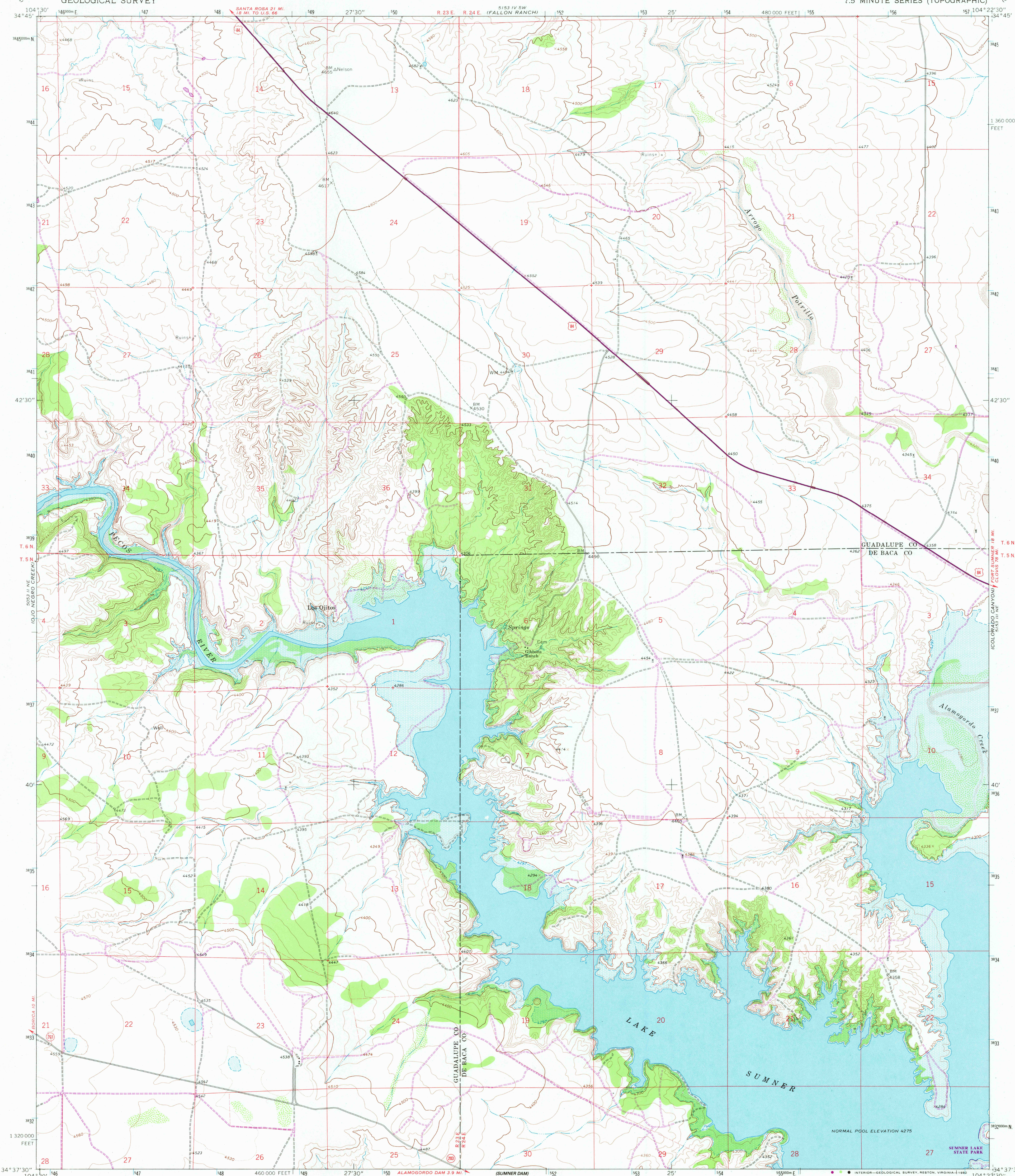


UNITED STATES
DEPARTMENT OF THE INTERIOR
GEOLOGICAL SURVEY

GIBBONS RANCH QUADRANGLE
NEW MEXICO
7.5 MINUTE SERIES (TOPOGRAPHIC)



Mapped, edited, and published by the Geological Survey
Control by USGS and NOS/NOAA
Topography by photogrammetric methods from aerial
photographs taken 1965. Field checked 1966
Polyconic projection. 10,000-foot grid ticks based on New Mexico
coordinate system, east zone. 1000-meter Universal Transverse
Mercator grid ticks, zone 13, shown in blue. 1927 North
American Datum. To place on the predicted North American
Datum 1983 move the projection lines 3 meters south and
47 meters east as shown by dashed corner ticks
Fine red dashed lines indicate selected fence lines
Areas covered by dashed light-blue pattern are
subject to controlled inundation
There may be private inholdings within the boundaries of the
National or State reservations shown on this map
Revisions shown in purple and woodland compiled from aerial
photographs taken 1979 and other sources. This information
not field checked. Map edited 1982

UTM GRID AND 1982 MAGNETIC NORTH
DECLINATION AT CENTER OF SHEET

SCALE 1:24,000
1 1000 0 1000 2000 3000 4000 5000 6000 7000 FEET
1 5 10 KILOMETER
CONTOUR INTERVAL 20 FEET
DOTTED LINES REPRESENT 10-FOOT CONTOURS
NATIONAL GEODETIC VERTICAL DATUM OF 1929



ROAD CLASSIFICATION
Primary highway, all weather, Light-duty road, all weather,
hard surface Improved surface
Secondary highway, all weather, Unimproved road, fair or dry
hard surface weather
Interstate Route U. S. Route State Route

GIBBONS RANCH, N. MEX.
N3437.5—W10422.5/7.5

1966
PHOTOREVISED 1982
DMA 5153 III NW—SERIES V881

RETURN TO:
USGS AND HISTORICAL MAP ARCHIVES

MAR 17 1983

2576