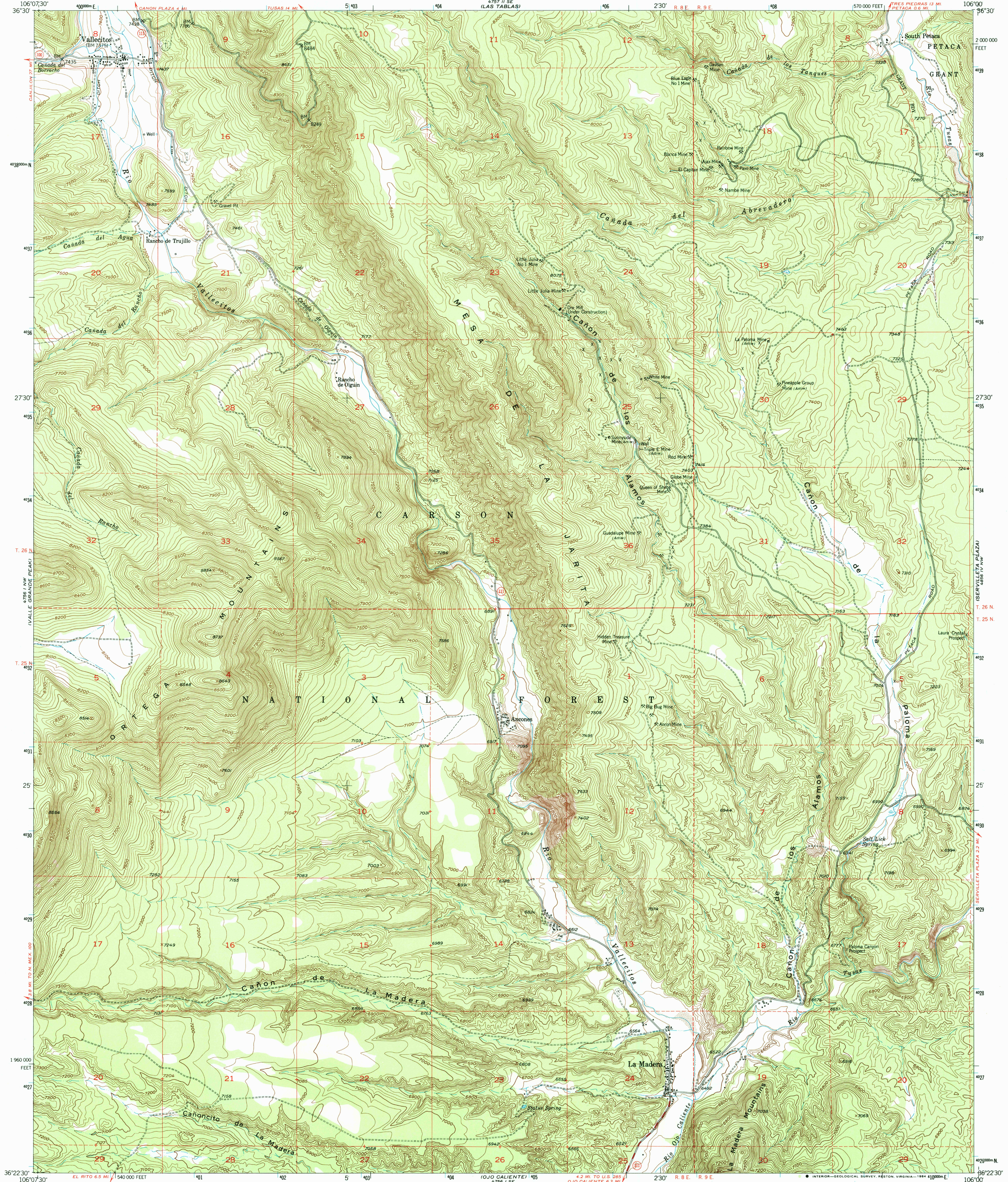


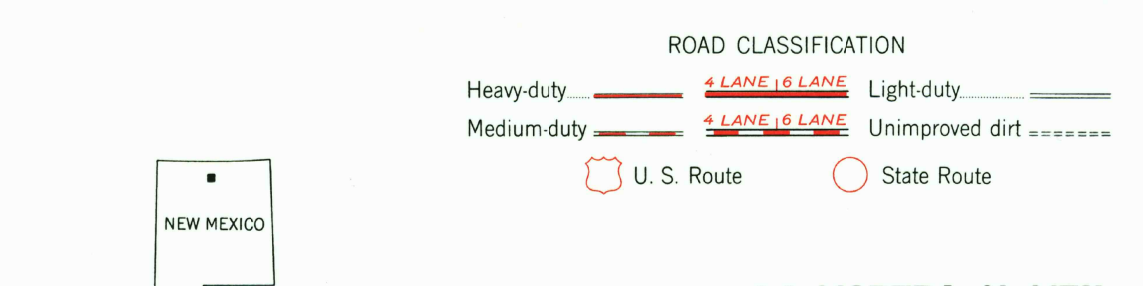
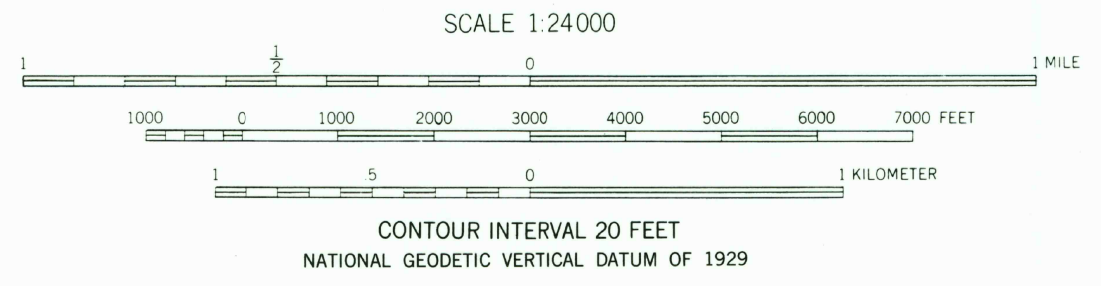
UNITED STATES
DEPARTMENT OF THE INTERIOR
GEOLOGICAL SURVEY

LA MADERA QUADRANGLE
NEW MEXICO—RIO ARRIBA CO.
7.5 MINUTE SERIES (TOPOGRAPHIC)



Mapped, edited, and published by the Geological Survey
Control by USGS and USC&GS
Topography from aerial photographs by multiplex methods
Aerial photographs taken 1947. Field check 1953
Polyconic projection. 1927 North American Datum
10,000-foot grid based on New Mexico coordinate system,
central zone
Dashed land lines indicate approximate locations
Unchecked elevations are shown in brown
All mining features on this map are inactive unless otherwise
indicated
1000-meter Universal Transverse Mercator grid ticks,
zone 13, shown in blue

To place on the predicted North American Datum 1983
move the projection lines 1 meter north and
51 meters east as shown by dashed corner ticks



LA MADERA, N. MEX.
36106-D1-TF-024
1953
DMA 4756 I NE-SERIES V881

RETURN TO:
USGS AND HISTORICAL MAP ARCHIVES