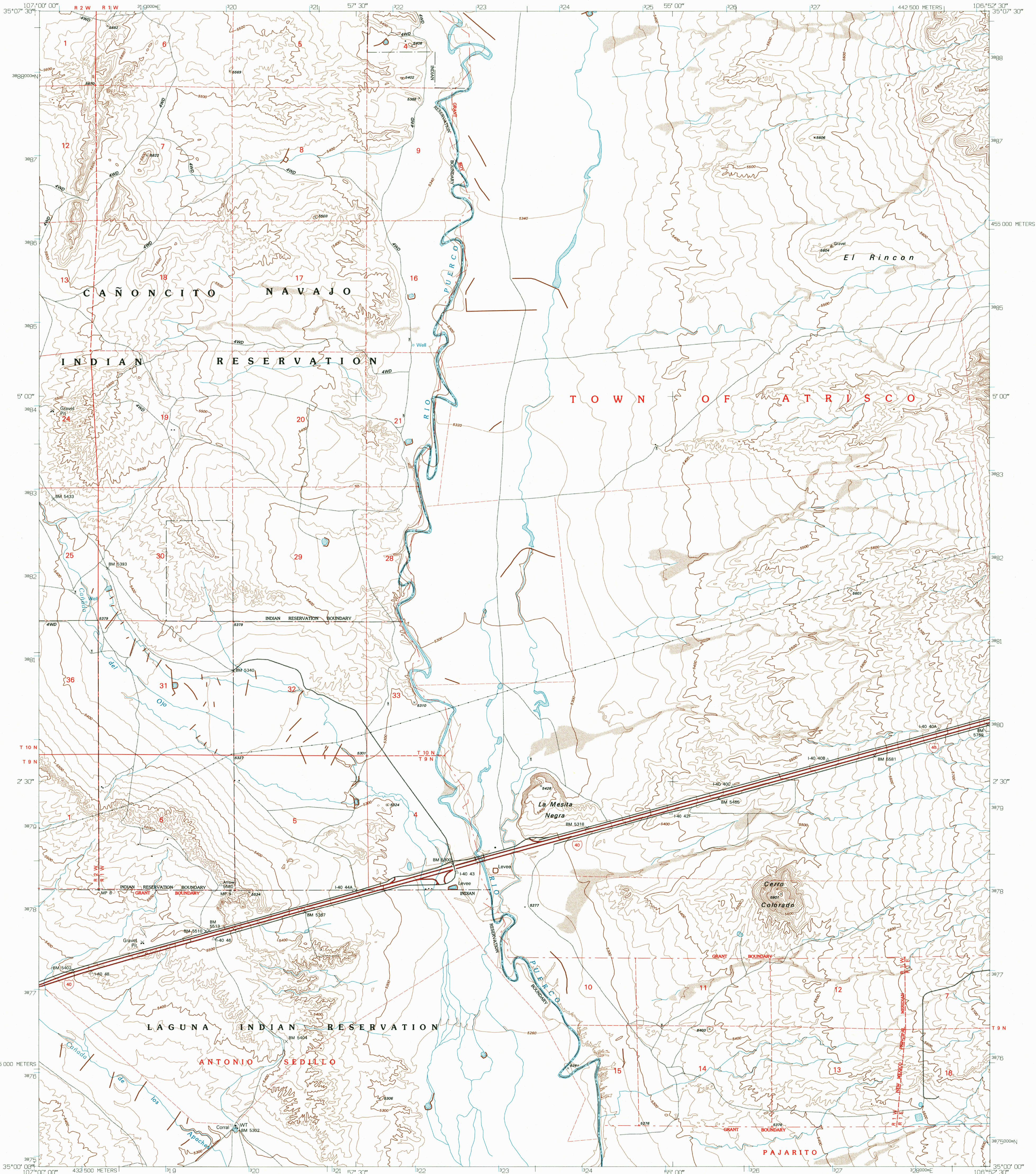
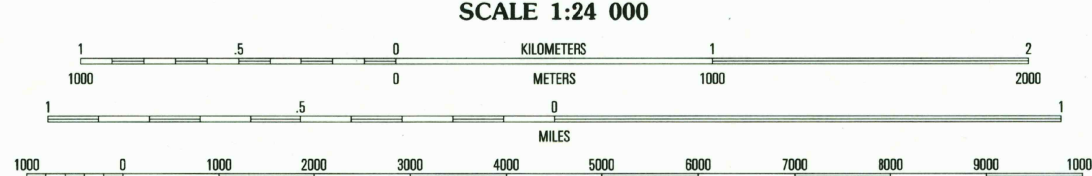
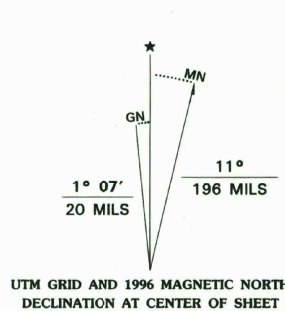


UNITED STATES  
DEPARTMENT OF THE INTERIOR  
GEOLOGICAL SURVEY

LA MESITA NEGRA QUADRANGLE  
NEW MEXICO-BERNALILLO CO.  
7.5-MINUTE SERIES (TOPOGRAPHIC)



Produced by the United States Geological Survey  
Compiled from imagery dated 1951. Revised from imagery  
dated 1990. PLSS and survey control current as of 1995.  
Contours and elevations current as of 1951. Map edited 1996.  
North American Datum of 1983 (NAD 83). Projection and  
blue 1000-meter ticks: Universal Transverse Mercator, zone 13.  
2500-meter ticks: New Mexico Coordinate System of 1983 (central zone).  
North American Datum of 1927 (NAD 27) is shown by dashed  
corner ticks. The values of the shift between NAD 83 and NAD 27  
for 7.5-minute intersections are obtainable from National Geodetic  
Survey NADCON software.  
There may be private inholdings within the boundaries of the  
National or State reservations shown on this map.



CONTOUR INTERVAL 20 FEET  
NATIONAL GEODETIC VERTICAL DATUM OF 1929

THIS MAP COMPLIES WITH NATIONAL MAP ACCURACY STANDARDS  
FOR SALE BY U.S. GEOLOGICAL SURVEY  
DENVER, COLORADO 80225, OR RESTON, VIRGINIA 22092  
A FOLDER DESCRIBING TOPOGRAPHIC MAPS AND SYMBOLS IS AVAILABLE ON REQUEST



QUADRANGLE LOCATION

1	2	3
4	5	6
7	8	9

ADJOINING 7.5' QUADRANGLE NAMES

ROAD CLASSIFICATION  
Primary highway  
hard surface .....  
Secondary highway  
hard surface .....  
Interstate Route  
U.S. Route  
State Route  
Light-duty road, hard or  
improved surface .....  
Unimproved road .....

LA MESITA NEGRA, NM  
35106-A8-TF-024

1990

DMA 4654 III SW-SERIES V881

