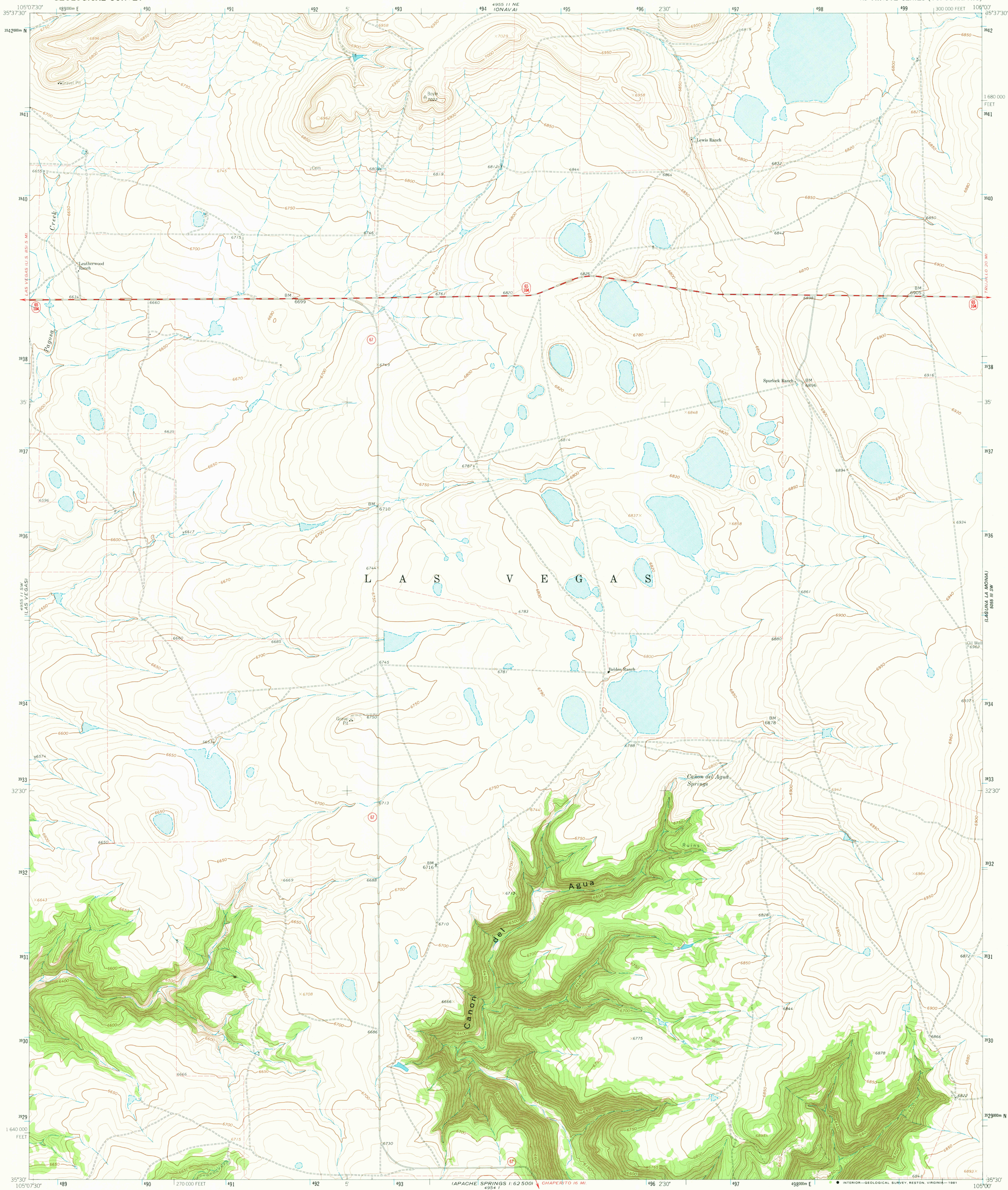


UNITED STATES
DEPARTMENT OF THE INTERIOR
GEOLOGICAL SURVEY

LAS VEGAS SE QUADRANGLE
NEW MEXICO—SAN MIGUEL CO.
7.5 MINUTE SERIES (TOPOGRAPHIC)



Mapped, edited, and published by the Geological Survey

Control by USGS and USC&GS

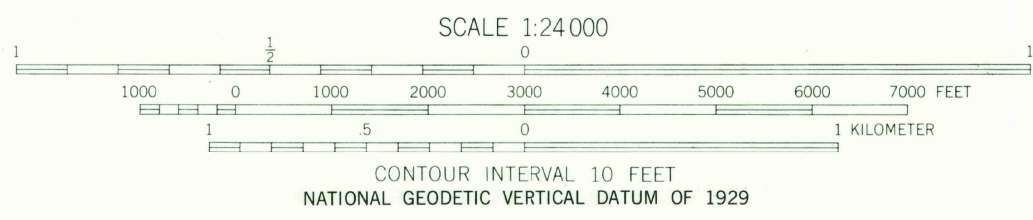
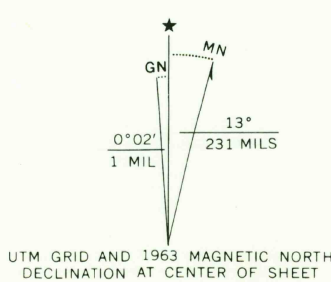
Topography by photogrammetric methods from aerial
photographs taken 1961. Field checked 1963

Polyconic projection. 1927 North American datum.
10,000-foot grid based on New Mexico coordinate system, east zone
1000-meter Universal Transverse Mercator grid ticks,
zone 13, shown in blue

Fine red dashed lines indicate selected fence lines

To place on the predicted North American Datum 1983
move the projection lines 1 meter south and
48 meters east as shown by dashed corner ticks

Map photoinspected 1976
No major culture or drainage changes observed



THIS MAP COMPLIES WITH NATIONAL MAP ACCURACY STANDARDS
FOR SALE BY U. S. GEOLOGICAL SURVEY, DENVER, COLORADO 80225, OR RESTON, VIRGINIA 22092
A FOLDER DESCRIBING TOPOGRAPHIC MAPS AND SYMBOLS IS AVAILABLE ON REQUEST



RETURN TO:
USGS MMD HISTORICAL MAP ARCHIVES

ROAD CLASSIFICATION
Medium-duty ——— Light-duty ———
Unimproved dirt ———
State Route ———

LAS VEGAS SE, N. MEX.
N3530—W10500/7.5

1963
PHOTOINSPECTED 1976
DMA 4955 II SE—SERIES V8B1

OCT 29 1981

700