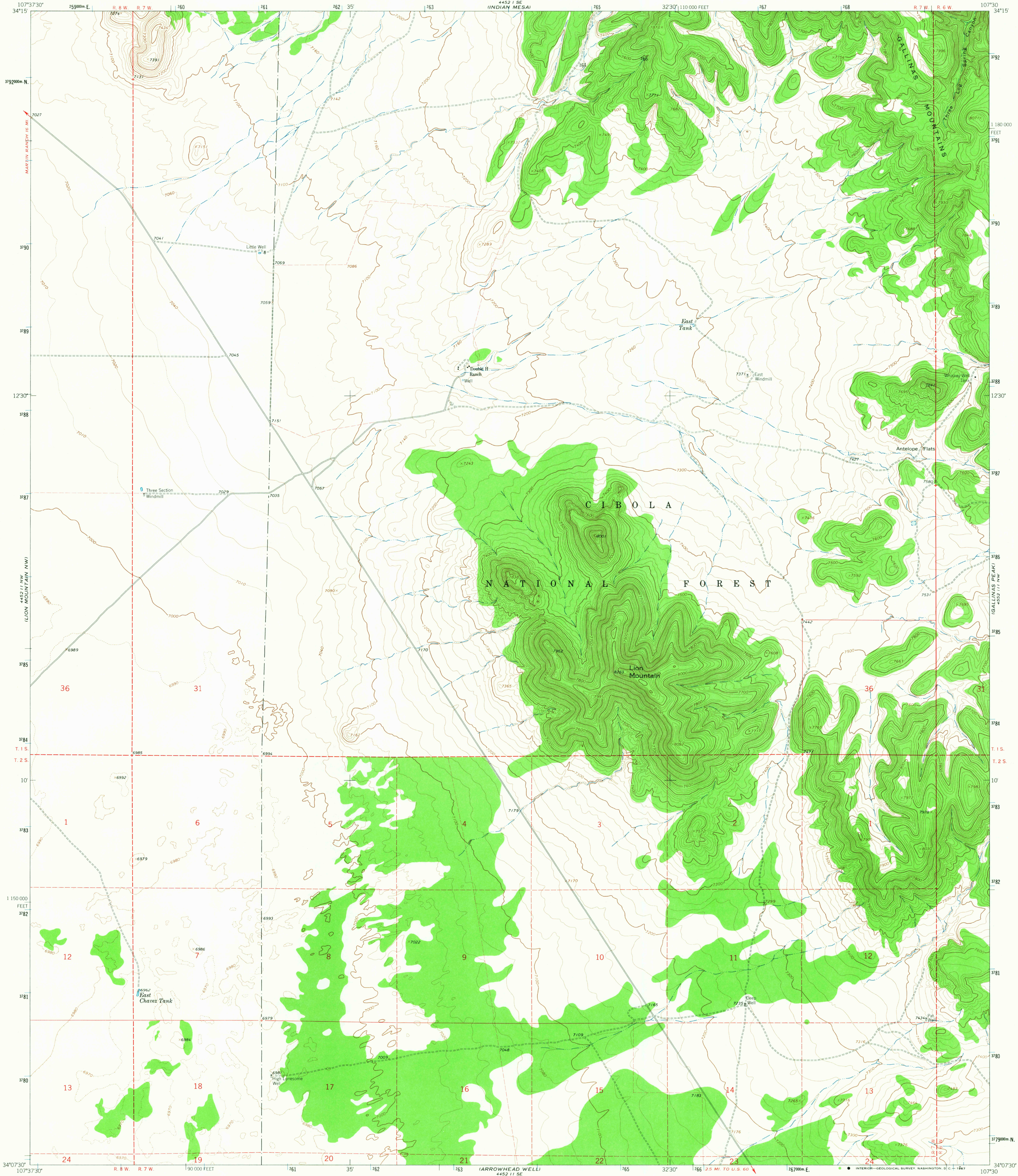
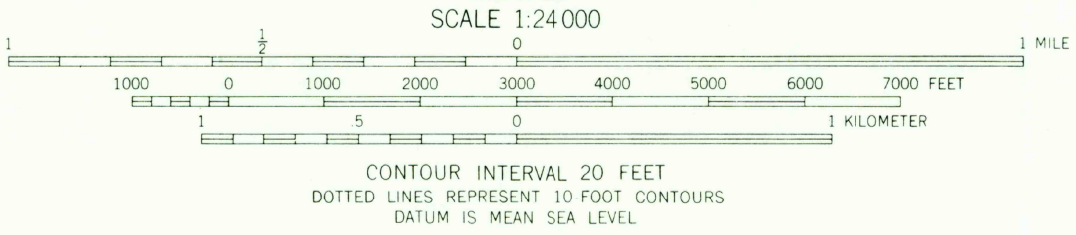
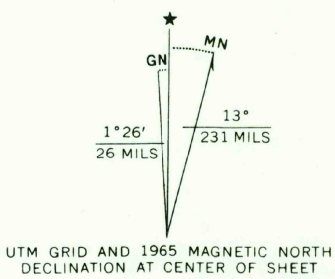


UNITED STATES  
DEPARTMENT OF THE INTERIOR  
GEOLOGICAL SURVEY

LION MOUNTAIN QUADRANGLE  
NEW MEXICO-SOCORRO CO.  
7.5 MINUTE SERIES (TOPOGRAPHIC)



Mapped, edited, and published by the Geological Survey  
Control by USGS and USC&GS  
Topography by photogrammetric methods from aerial  
photographs taken 1963 and planetable surveys 1965  
Polyconic projection: 1927 North American datum  
10,000-foot grid based on New Mexico coordinate system, central zone  
1000-meter Universal Transverse Mercator grid ticks,  
zone 13, shown in blue  
Fine red dashed lines indicate selected fence lines  
Certain land lines are omitted because of insufficient data



USGS  
Historical File  
Topographic Division



ROAD CLASSIFICATION  
Light-duty ————— Unimproved dirt - - - - -

U.S.G.S.  
FILE COPY  
TOPOGRAPHIC DIVISION

LION MOUNTAIN, N. MEX.  
N3407 5--W10730/7 5  
1965  
AMS 4452 II NE--SERIES V881

THIS MAP COMPLIES WITH NATIONAL MAP ACCURACY STANDARDS  
FOR SALE BY U. S. GEOLOGICAL SURVEY, DENVER, COLORADO 80225, OR WASHINGTON, D. C. 20242  
A FOLDER DESCRIBING TOPOGRAPHIC MAPS AND SYMBOLS IS AVAILABLE ON REQUEST

2570  
MAR 9 1967