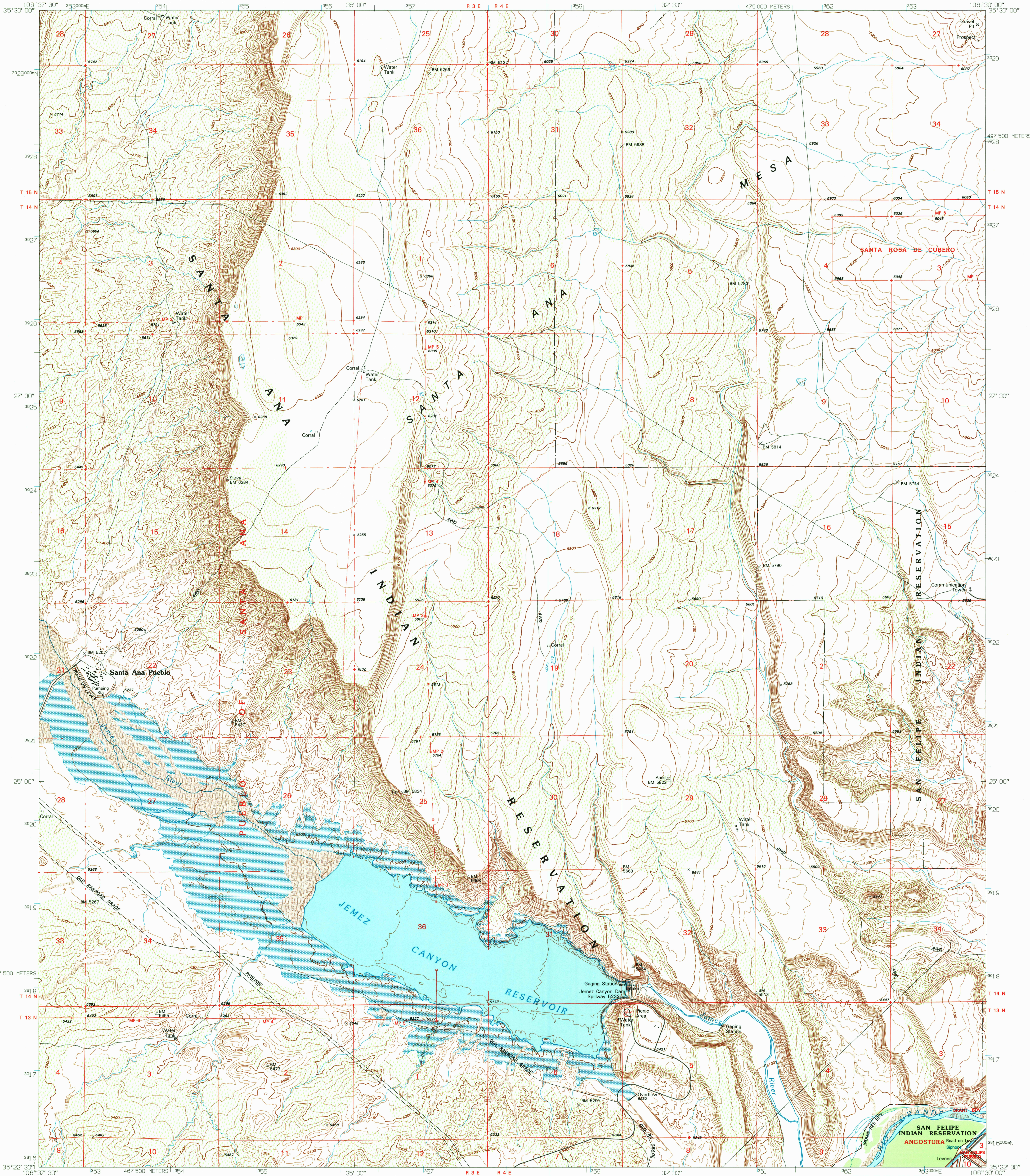
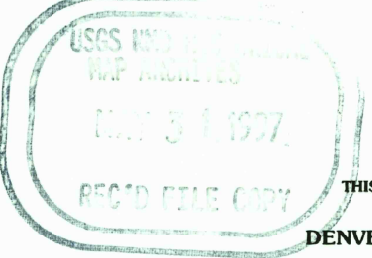
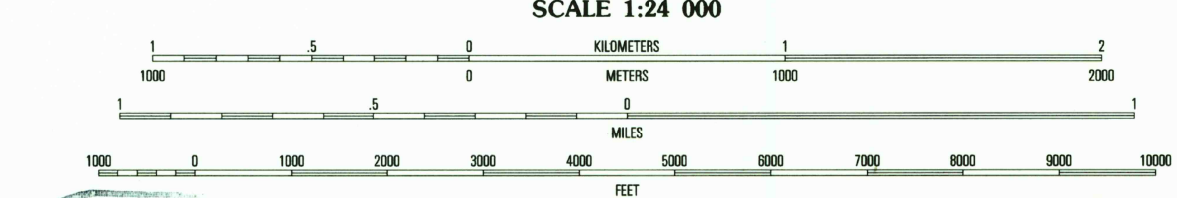
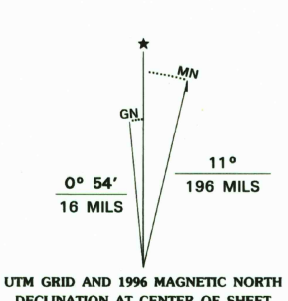


UNITED STATES
DEPARTMENT OF THE INTERIOR
GEOLOGICAL SURVEY

SANTA ANA PUEBLO QUADRANGLE
NEW MEXICO-SANDOVAL CO.
7.5-MINUTE SERIES (TOPOGRAPHIC)



Produced by the United States Geological Survey
Compiled from imagery dated 1949. Revised from imagery dated 1990. PLS and survey control current as of 1993. Contours and elevations current as of 1949. Map edited 1996.
North American Datum of 1983 (NAD 83). Projection and blue 1000-meter ticks: Universal Transverse Mercator, zone 13. 2500-meter ticks: New Mexico Coordinate System of 1983 (central zone).
North American Datum of 1927 (NAD 27) is shown by dashed corner ticks. The values of the shift between NAD 83 and NAD 27 for 7.5-minute intersections are obtainable from National Geodetic Survey NADCON software.
There may be private inholdings within the boundaries of the National or State reservations shown on this map. Areas covered by dashed light-blue pattern are subject to controlled inundation.



THIS MAP COMPLIES WITH NATIONAL MAP ACCURACY STANDARDS
FOR SALE BY U.S. GEOLOGICAL SURVEY
DENVER, COLORADO 80225, OR RESTON, VIRGINIA 22092
A FOLDER DESCRIBING TOPOGRAPHIC MAPS AND SYMBOLS IS AVAILABLE ON REQUEST

ROAD CLASSIFICATION

| | |
|-----------------------------------|--|
| Primary highway hard surface | Light-duty road, hard or improved surface |
| Secondary highway hard surface | Unimproved road |

Interstate Route U.S. Route State Route

QUADRANGLE LOCATION

| | | |
|---|---|---|
| 1 | 2 | 3 |
| 4 | 5 | 6 |
| 7 | 8 | 9 |

1 Jemez Pueblo
2 Loma Creston
3 Santa Domingo Pueblo SW
4 Bernalillo NW
5 San Felipe Pueblo
6 Loma Machete
7 Bernalillo
8 Placitas

SANTA ANA PUEBLO, NM
35106-D5-TF-024
1990
DMA 4654 1 NE-SERIES V881

