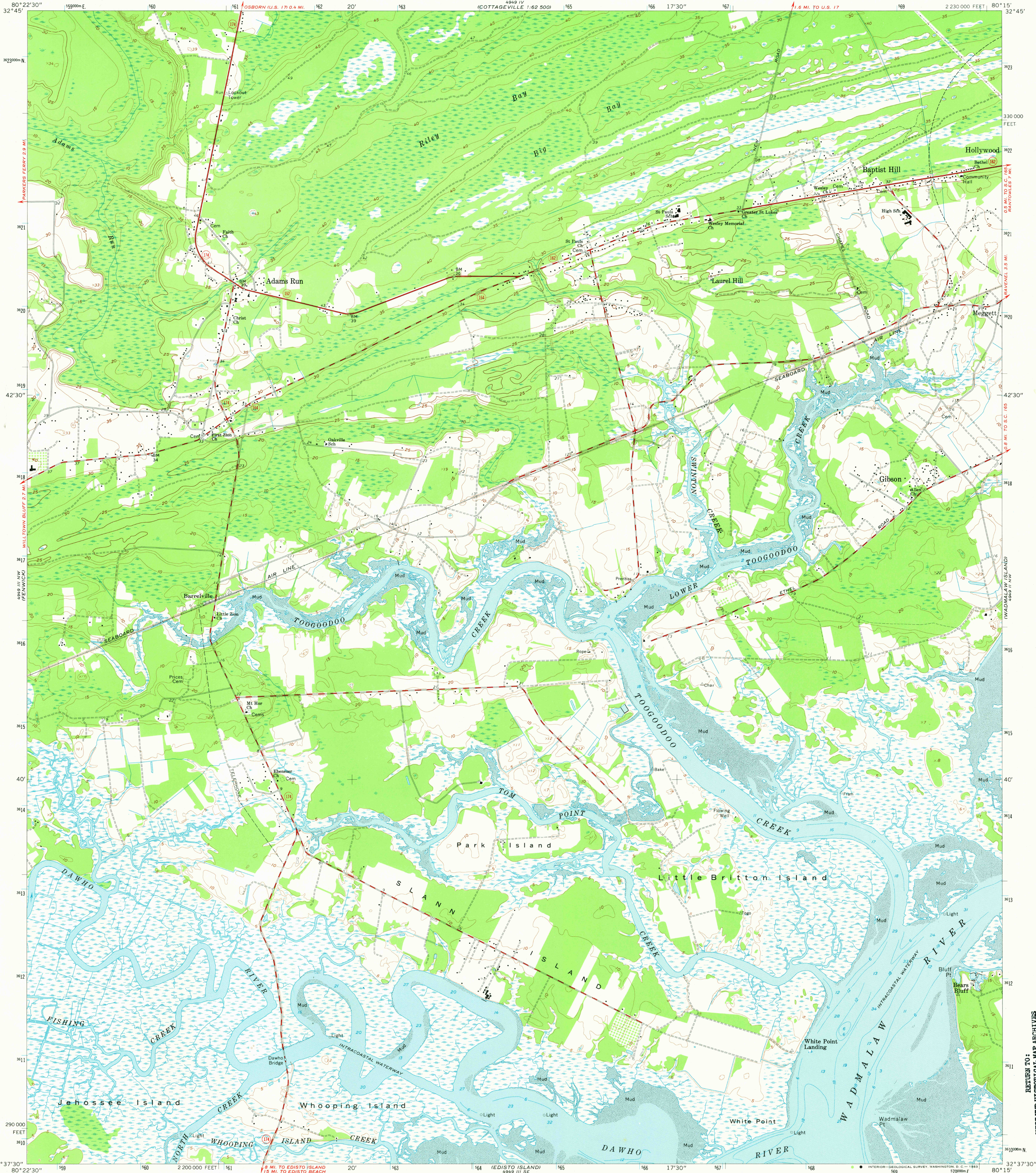


UNITED STATES
DEPARTMENT OF THE INTERIOR
GEOLOGICAL SURVEY

ADAMS RUN QUADRANGLE
SOUTH CAROLINA-CHARLESTON CO.
7.5 MINUTE SERIES (TOPOGRAPHIC)
NE/4 EDISTO ISLAND 15' QUADRANGLE



Map by the U.S. Coast and Geodetic Survey
Edited and published by the Geological Survey
Control by USC&GS and South Carolina Geodetic Survey
Planimetry by photogrammetric methods from aerial photographs
taken 1952 and 1953. Topography by planetable surveys 1955.
Field checked 1960
Selected hydrographic data compiled from USC&GS
Chart 1239 (1959). This information is not intended for
navigational purposes
Polyconic projection. 1927 North American datum
10,000-foot grid based on South Carolina coordinate system, south zone
1000-meter Universal Transverse Mercator grid ticks,
zone 17, shown in blue

Map photinspected 1972
No major culture or drainage changes observed

SCALE 1:24,000
1 1000 0 1000 2000 3000 4000 5000 6000 7000 FEET
1 5 10 15 20 25 30 35 40 45 50 55 60 65 70 75 80 85 90 95 100 METERS
CONTOUR INTERVAL 5 FEET
DATUM IS MEAN SEA LEVEL
DEPTH CURVES AND SOUNDINGS IN FEET-DATUM IS MEAN LOW WATER
SHORELINE SHOWN REPRESENTS THE APPROXIMATE LINE OF MEAN HIGH WATER
THE MEAN RANGE OF TIDE IS APPROXIMATELY 6.3 FEET
THIS MAP COMPLIES WITH NATIONAL MAP ACCURACY STANDARDS
FOR SALE BY U. S. GEOLOGICAL SURVEY, WASHINGTON 25, D. C.
A FOLDER DESCRIBING TOPOGRAPHIC MAPS AND SYMBOLS IS AVAILABLE ON REQUEST



ROAD CLASSIFICATION
Heavy-duty ——— Light-duty ———
Medium-duty ——— Unimproved dirt ———
State Route

ADAMS RUN, S. C.
NE/4 EDISTO ISLAND 15' QUADRANGLE
N3237.5-W8015.75
PHOTOINSPECTED 1972
1960

AMS 4949 III NE-SERIES V 846

RETURN TO:
USGS AND HISTORICAL MAP ARCHIVES