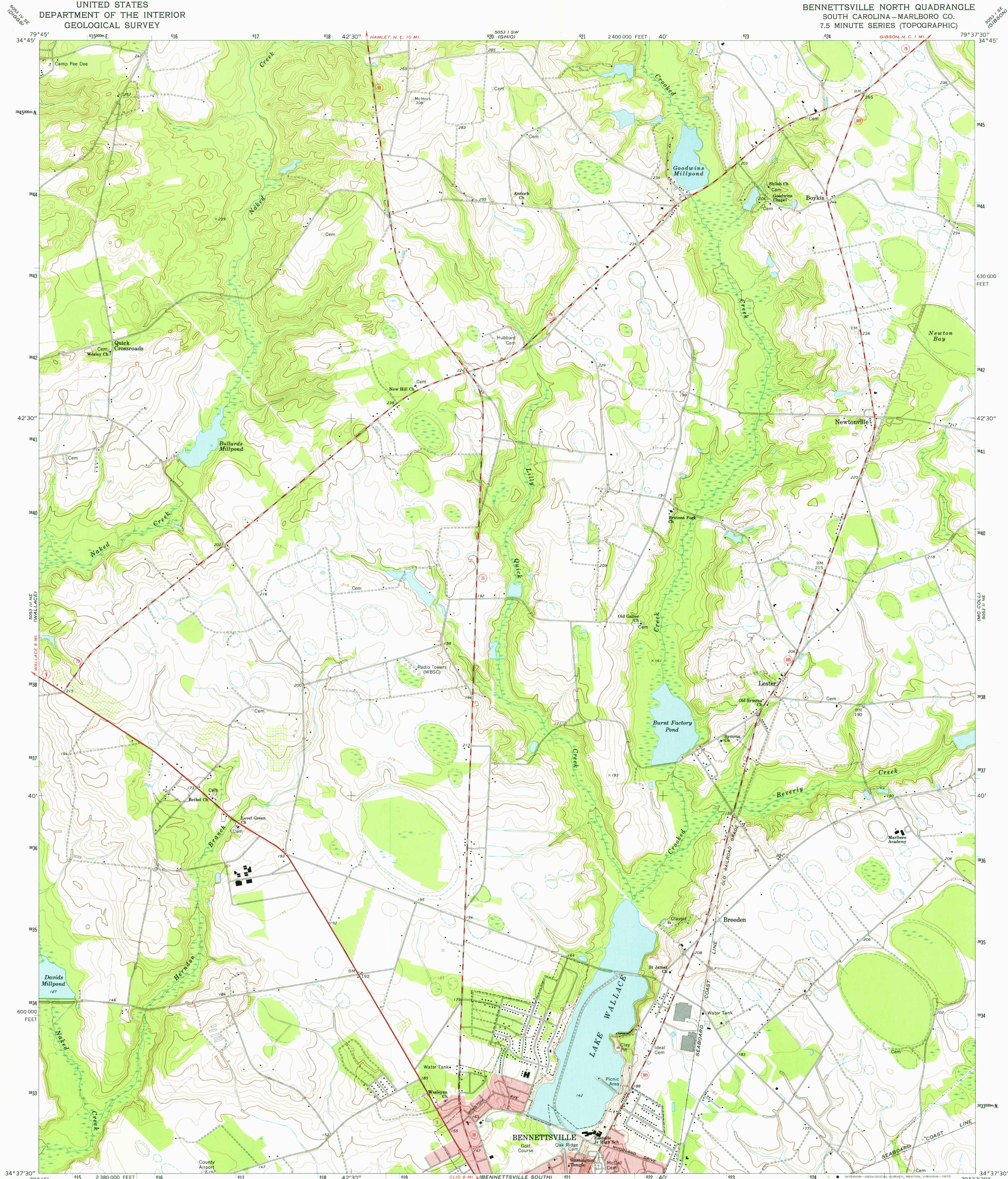
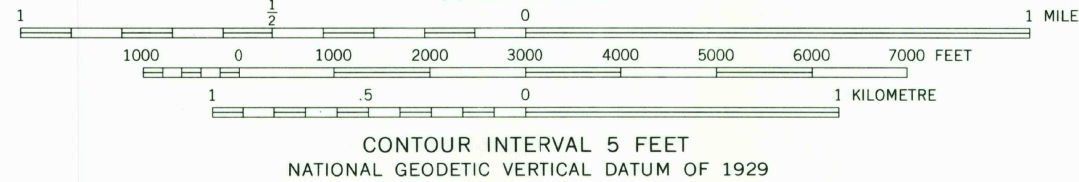
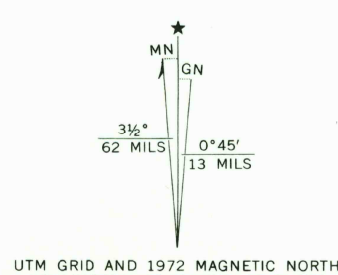


UNITED STATES
DEPARTMENT OF THE INTERIOR
GEOLOGICAL SURVEY

BENNETTSVILLE NORTH QUADRANGLE
SOUTH CAROLINA—MARLBORO CO.
7.5 MINUTE SERIES (TOPOGRAPHIC)



Mapped, edited, and published by the Geological Survey
Control by USGS, USC&GS, and South Carolina
Civil Works Administration
Topography by photogrammetric methods from aerial
photographs taken 1971. Field checked 1972
Projection and 10,000-foot grid ticks: South Carolina coordinate
system, north zone (Lambert conformal conic)
1000-metre Universal Transverse Mercator grid ticks,
zone 17, shown in blue. 1927 North American datum
Fine red dashed lines indicate selected fence and field lines where
generally visible on aerial photographs. This information is unchecked
Red tint indicates areas in which only landmark buildings are shown
Short dashed blue ticks indicate elliptical bay outlines
visible on aerial photographs



ROAD CLASSIFICATION
Primary highway, hard surface — Light-duty road, hard or improved surface —
Secondary highway, hard surface — Unimproved road —
Interstate Route — U. S. Route — State Route —

THIS MAP COMPLIES WITH NATIONAL MAP ACCURACY STANDARDS
FOR SALE BY U. S. GEOLOGICAL SURVEY, RESTON, VIRGINIA 22092
A FOLDER DESCRIBING TOPOGRAPHIC MAPS AND SYMBOLS IS AVAILABLE ON REQUEST

USGS
HISTORICAL FILE
TOPOGRAPHIC DIVISION

BENNETTSVILLE NORTH, S. C. JAN 21 1976
N3437.5—W7937.5/7.5
1972
AMS 5053 II NW—SERIES V846