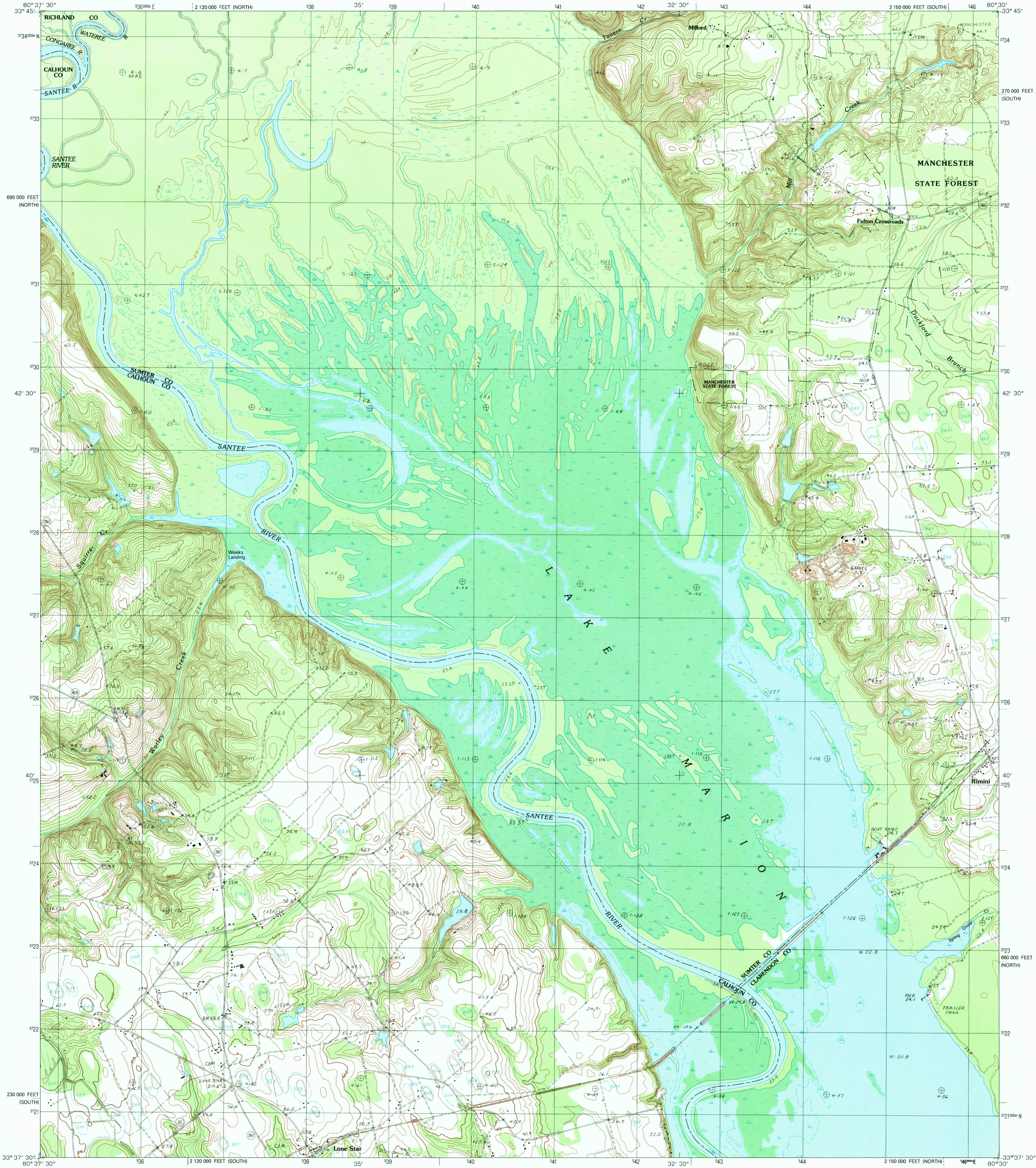


UNITED STATES
DEPARTMENT OF THE INTERIOR
GEOLOGICAL SURVEY

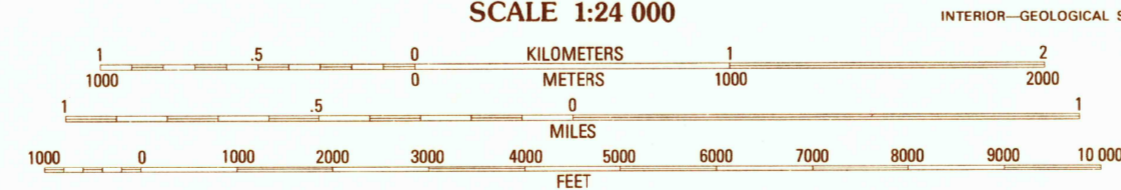
LONE STAR QUADRANGLE
SOUTH CAROLINA
7.5 MINUTE SERIES (TOPOGRAPHIC)



PRODUCED BY THE UNITED STATES GEOLOGICAL SURVEY
CONTROL BY USGS AND NOS/NOAA
COMPILED FROM AERIAL PHOTOGRAPHS TAKEN 1981
FIELD CHECKED 1988. MAP EDITED 1988
PROJECTION UNIVERSAL TRANSVERSE MERCATOR
GRID: 1000-METER UNIVERSAL TRANSVERSE MERCATOR ZONE 17
10,000-FOOT STATE GRID TICKS SOUTH CAROLINA
SOUTH AND NORTH ZONES

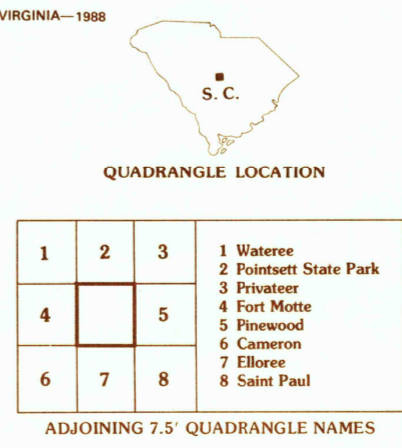
UTM GRID DECLINATION 0°15' EAST
1988 MAGNETIC NORTH DECLINATION 9°09' WEST
VERTICAL DATUM NATIONAL GEODETIC VERTICAL DATUM OF 1929
HORIZONTAL DATUM 1927 NORTH AMERICAN DATUM
To place on the predicted North American Datum of 1983,
move the projection lines as shown by dashed corner ticks
(13 meters south and 18 meters west)
There may be private inholdings within the boundaries of any
Federal and State reservations shown on this map
No distinction made between houses, barns, and other buildings
Areas covered by dashed light-blue pattern are subject to
controlled inundation
Short dashed blue lines indicate elliptical bay outlines
visible on aerial photographs

PROVISIONAL MAP
Produced from original
manuscript drawings. Information
shown as of date of
photography.



SCALE 1:24 000
KILOMETERS 0 1 2
METERS 0 1000 2000
MILES 0 1
FEET 0 1000 2000 3000 4000 5000 6000 7000 8000 9000 10 000
CONTOUR INTERVAL 1.5 METERS
CONTROL AND FIELD ESTABLISHED ELEVATIONS SHOWN TO THE NEAREST 0.1 METER
OTHER ELEVATIONS SHOWN TO THE NEAREST 0.5 METER
To convert meters to feet multiply by 3.2808
To convert feet to meters multiply by .3048

THIS MAP COMPLIES WITH NATIONAL MAP ACCURACY STANDARDS
FOR SALE BY U. S. GEOLOGICAL SURVEY, DENVER, COLORADO 80225, OR RESTON, VIRGINIA 22092



CONTOURS AND ELEVATIONS IN METERS
ROAD LEGEND

Improved Road
Unimproved Road
Trail
Interstate Route U.S. Route State Route

LONE STAR, SOUTH CAROLINA
PROVISIONAL EDITION 1988
33080-F5-TM-024

U.S. GEOLOGICAL SURVEY
JUN 10 1988
FIELD COPY