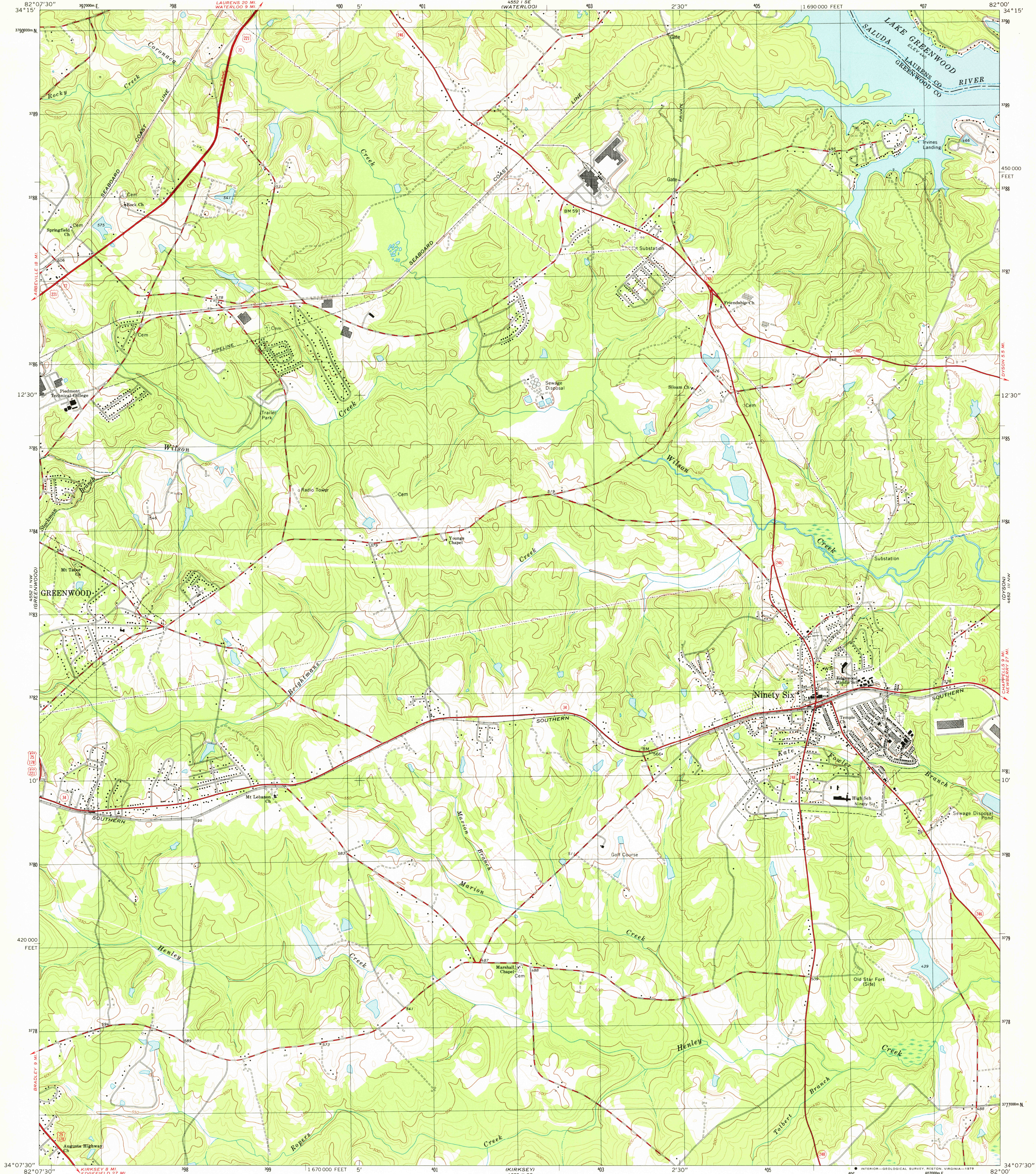


4552 II SW
(CROSSBURY)

UNITED STATES
DEPARTMENT OF THE INTERIOR
GEOLOGICAL SURVEY

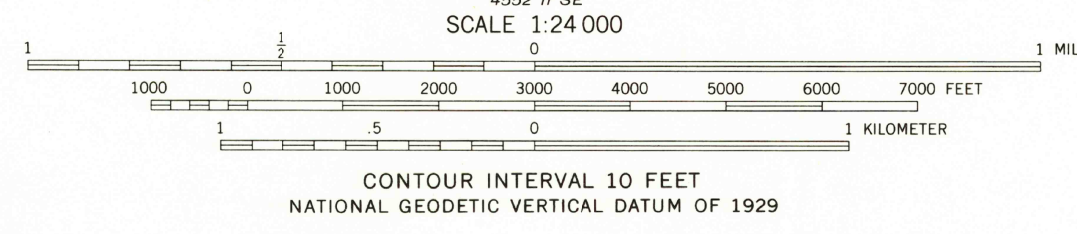
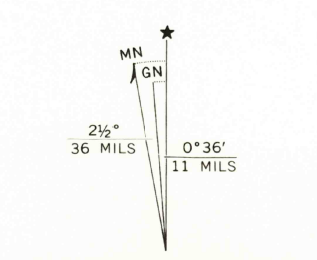
NINETY SIX QUADRANGLE
SOUTH CAROLINA
7.5 MINUTE SERIES (TOPOGRAPHIC)

4552 II SW
(CROSS HILL)



Mapped, edited, and published by the Geological Survey in cooperation with the Army Map Service. Revised in cooperation with State of South Carolina Development Board and Greenwood County Planning Commission Control by USGS, NOS/NOAA, and South Carolina Geodetic Survey Planimetry by photogrammetric methods from aerial photographs taken 1939. Topography by planimetric surveys 1947. Revised from aerial photographs taken 1972. Field checked 1975. Map edited 1978.

Polyconic projection, 1927 North American datum 10,000-foot grid ticks based on South Carolina coordinate system, north zone 1000-meter Universal Transverse Mercator grid, zone 17 Fine red dashed lines indicate selected fence and field lines where generally visible on aerial photographs. This information is unchecked



ROAD CLASSIFICATION
Primary highway, hard surface
Secondary highway, hard surface
Light-duty road, hard or improved surface
Unimproved road
Interstate Route
U. S. Route
State Route

USGS
Historical File
Topographic Division
NINETY SIX, S. C.
N3407.5—W8200/7.5
1978
AMS 4552 II NE—SERIES V846

MAR 15 1978

2400